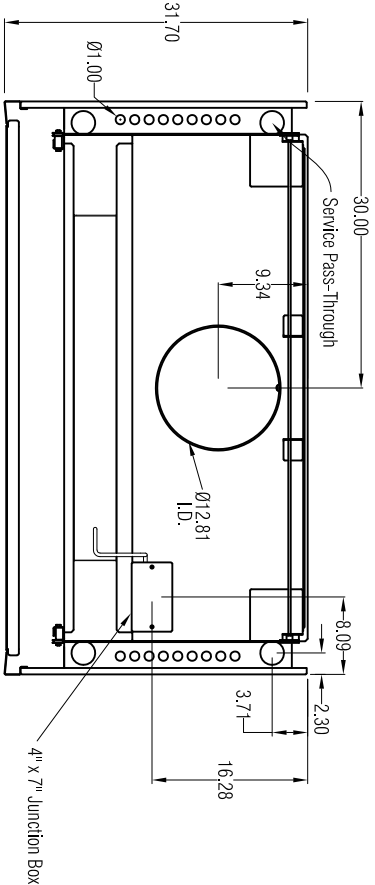


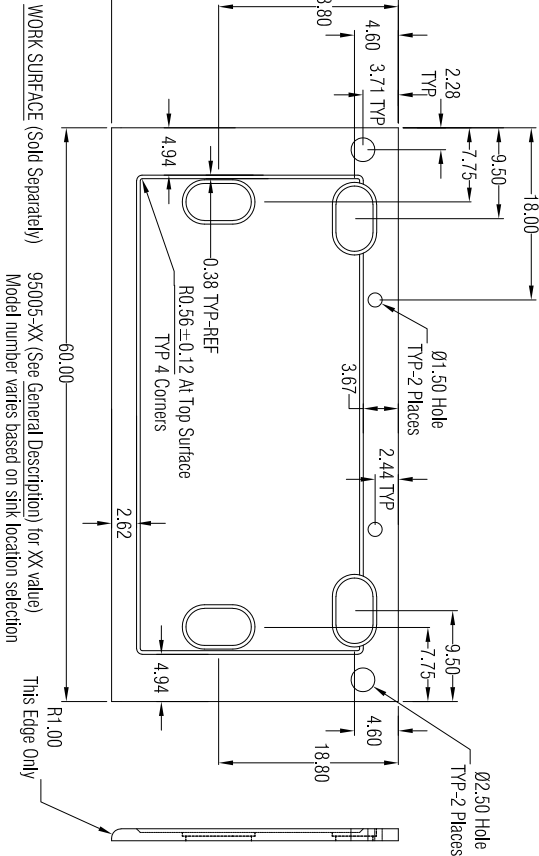
GENERAL DESCRIPTION

5' Protector Premier Laboratory Hood
Model: 100500020

- Exterior Superstructure
* Double Wall Construction * Cold Rolled Steel
Interior Superstructure
* Galvanized Steel (standard)
Left / Right Facia:
* Powder Coated Steel * Color: Glacier White
Liner Material
* Molded Fiberglass Reinforced Polyester Resin
Side Panels
* Both Sides * Removable * Color: Glacier White
Baffles
* Molded Fiberglass Reinforced Polyester Resin
Interior Access Panels
* None
Corner Post with Access Covers
* Right and Left Sides
* Cold Rolled Steel
Air Foil
* Cold Rolled Steel * Powder Coat Finish
Sash
* Vertical Travel
* Tempered Safety Glass
* Counter Weighted and Balanced
* Pulley System
Electrical Fixtures
* LED Light and Tubes w/ Switch
Alarm / Monitor (Sold Separately)
* Factory Prepared for Air Flow Monitor/Alarm
Wiring
* Fume Hood Wired at Factory
* Electrical Connection made inside 4x7 Junction Box
* 208–250, 50/60 Hz
Service Fixtures (Sold Separately)
* Factory Prepared for Service Fixtures, Four Per Side
Work Surface (Sold Separately)
* Block Epoxy Work Surface, Model 95005-XX (See below for XX)
* # 00 – No cup sink cutouts
* # 01 – Cup sink cutout right rear location
* # 02 – Cup sink cutout right side location
* # 10 – Cup sink cutout left rear location
* # 20 – Cup sink cutout left side location
* # 11 – Cup sink cutouts left and right rear locations
* # 22 – Cup sink cutouts left and right side locations
Cup Sink (Sold Separately)
* Block Oval Polypropylene Cupsink, 3" x 6", # 4005200
Required Accessories (Sold Separately)
* Remote Blower
* Supporting Base



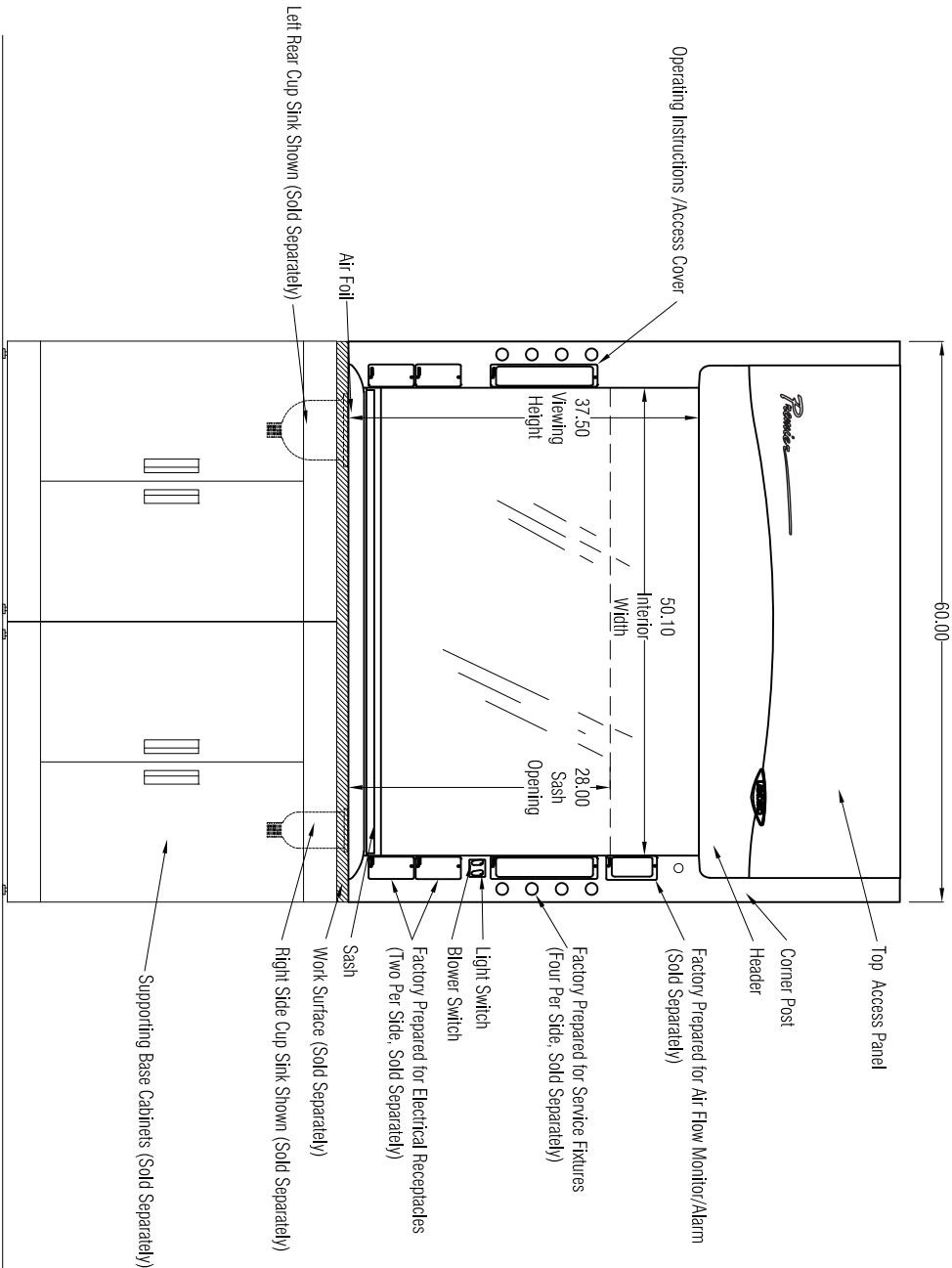
TOP VIEW



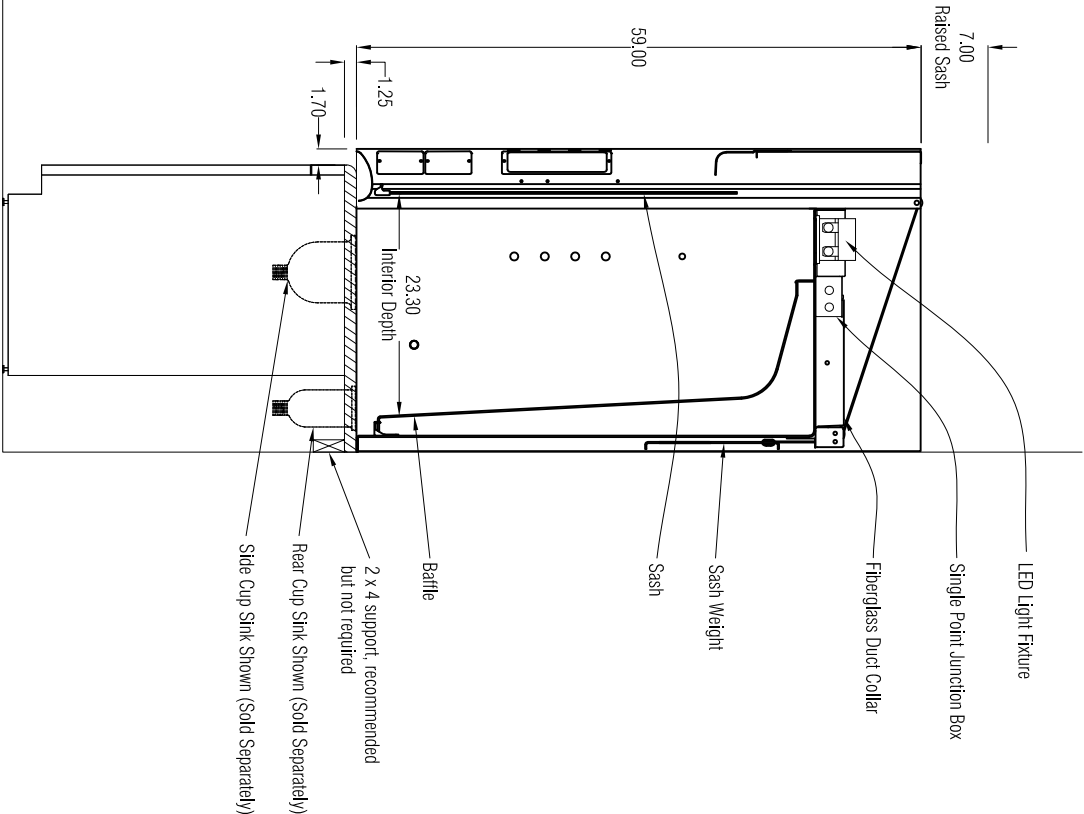
WORK SURFACE (Sold Separately)

95005-XX (See General Description) for XX value)
Model number varies based on sink location selection

This Edge Only



FRONT VIEW



SIDE VIEW

	Airflow Volumetric Rate (CFM) @ Static Pressure (inches of water)	
Face Velocity (fpm)	100% open (28")	62.5% open (18")
100	955 @ 0.31"	595 @ 0.12"
80	765 @ 0.20"	480 @ 0.08"
60	575 @ 0.11"	360 @ 0.04"

Assembly and Crating
* Pre-Assembled
* Palletized

SCALE: Scaled to fit

FUME HOODS for:



LABCONCO CORPORATION • KANSAS CITY MO USA 64132
800-821-5525 / 816-333-8811 • labconco.com

Rev _____ Date _____

Date: June 2023

Drawing # 100500020

Drawn By: C. Alumbaugh

Checked By:

Approved By:

Sheet No.