

## GENERAL DESCRIPTION

2247300 Basic 47 Laboratory Hood

## DETAILS

FULLY ASSEMBLED. HOOD INTERIOR AND EXTERIOR ARE CONSTRUCTED OF GLACIER WHITE, .16 GAUGE, EPOXY STEEL. HOOD INCLUDES 3/16"THICK CLEAR TEMPERED SAFETY GLASS COUNTERBALANCED SASH AND 10 5/16" OD DUCT COLLAR FOR CONNECTION TO THE EXHAUST SYSTEM. HOOD INCLUDES A REMOVABLE FRONT PANEL, AIR FOIL, AND TWO-PIECE ADJUSTABLE BAFLE. THE RIGHT SIDE FIXTURE PANEL IS FACTORY PREPARED TO ACCEPT UP TO THREE SERVICE FIXTURES, ONE FRONT MOUNTED DUPLEX ELECTRICAL RECEPTACLE, AND ONE SIDE WALL-MOUNTED CUP SINK WITH TURRET. THE HOOD LINER IS FACTORY PREPARED FOR TWO APPARATUS HOODS.

## DIMENSIONS

47"W X 25"D X 48"H

## ELECTRICAL

115 VOLTS, SINGLE PHASE, 60 HZ, 6.8 AMP  
HOOD INCLUDES 100 WATT VAPOR-PROOF  
INCANDESCENT LIGHT FIXTURE, INTERNAL WIRING  
AND SWITCHES.

## PERFORMANCE

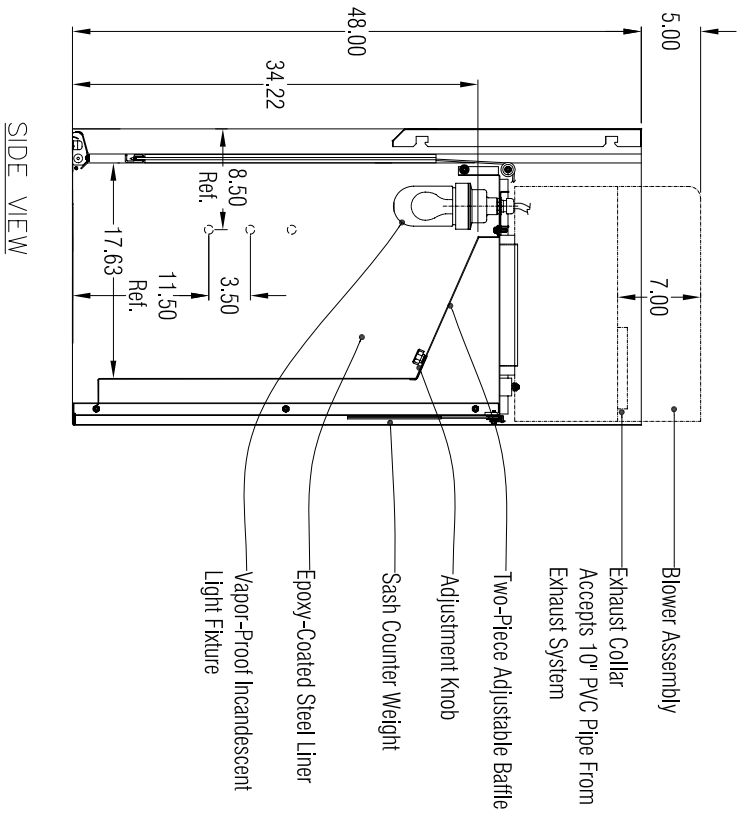
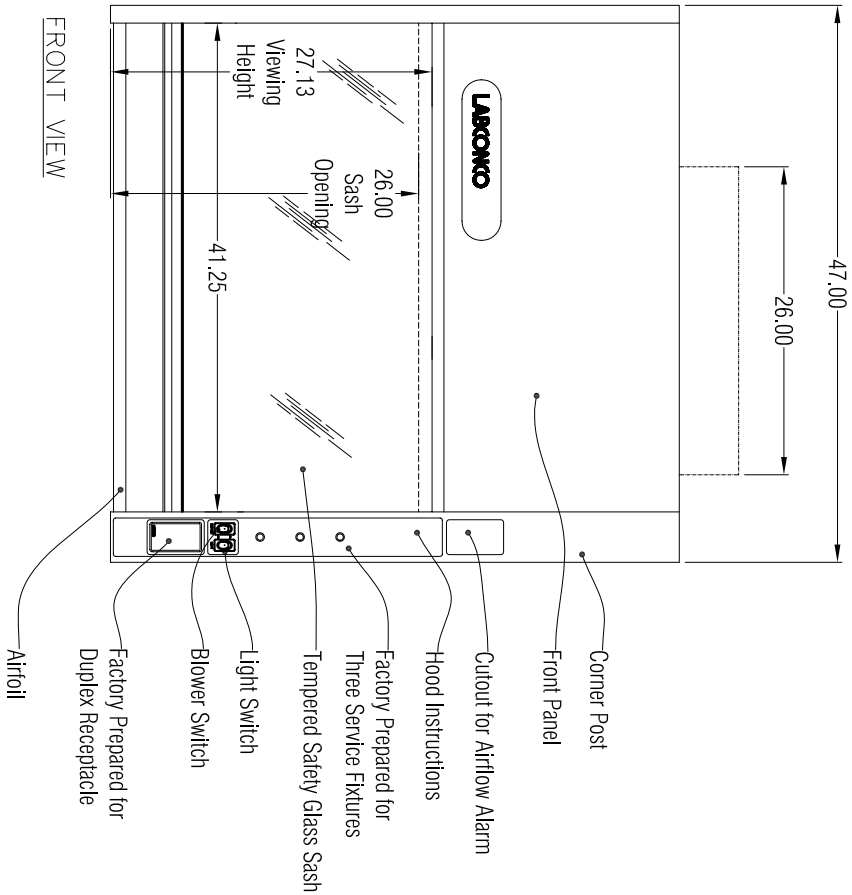
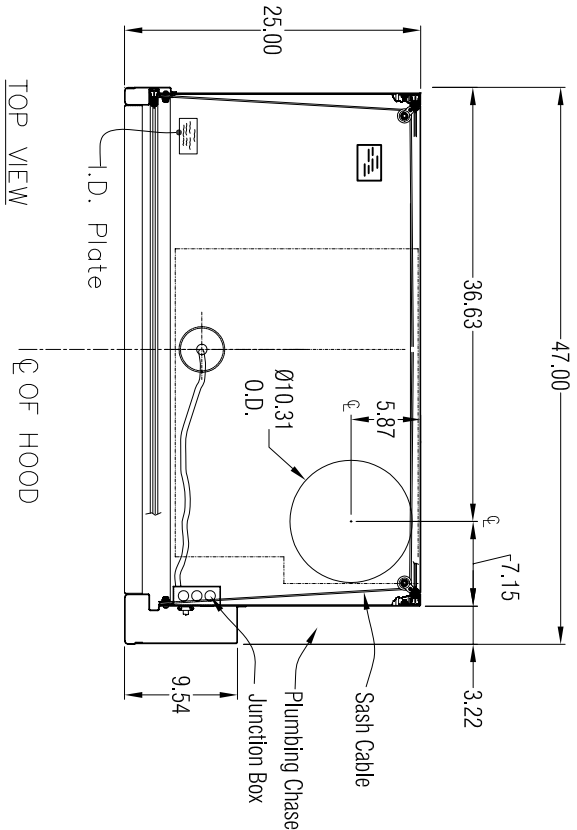
OVERCOMES EXTERNAL STATIC PRESSURE  
.25" @ 100 FPM (720 CFM)

### SHIPPING WEIGHT

375 LBS.

NOTES:

HOOD HAS A 1/3 HP BLOWER FOR OPERATION

[illegible]