

# **User's Manual**

## **Oxygen Monitors, 0 - 10,000 ppm**

### **Models**

**5244500**

**5244501**

## WARRANTY

Alpha Omega Instruments Corp. warrants the products delivered to be free from defects in material and workmanship at the time of delivery to the FOB. point specified in the purchase order, its liability under this warranty being limited to repairing or replacing, at Alpha Omega Instruments' option, items (excluding the oxygen sensor) which are returned to it **prepaid** within two (2) years from the date of shipment and found to Seller's satisfaction to have been so defective.

Alpha Omega Instrument's one (1) year sensor warranty offers protection for one year from the date of shipment of the Series 3000 Trace Oxygen Analyzer. Any sensor from a Series 3000 Trace Oxygen Analyzer that fails under normal use must be returned to Seller prepaid and, if such sensor is determined by Seller to be defective, Seller shall provide Buyer a replacement sensor. Buyer must provide the serial number of the analyzer from which the sensor has been removed. If a sensor is found to be defective and a new one issued, the warranty of the replacement sensor (s) is for a period of one year from the date of shipment. At times it may be necessary to ship a replacement sensor in advance of receiving one returned for warranty claim. In such cases, if the returned sensor is not covered under warranty, the user will be charged the full price of a replacement sensor. **In no event shall Alpha Omega Instruments Corp. be liable for consequential damages.**

***NO PRODUCT IS WARRANTED AS BEING FIT FOR A PARTICULAR PURPOSE AND THERE IS NO WARRANTY OF MERCHANTABILITY.***

This warranty applies only if:

- (i) the items are used solely under the operating conditions and manner recommended in this manual, specifications, or other literature;
- (ii) the items have not been misused or abused in any manner or repairs attempted thereon;
- (iii) written notice of the failure within the warranty period is forwarded to Alpha Omega Instruments Corp. and the directions received for properly identifying items returned under warranty are followed;
- (iv) the return notice authorizes Alpha Omega Instruments Corp. to examine and disassemble returned products to the extent the Company deems necessary to ascertain the cause of failure.

The warranties stated herein are exclusive. THERE ARE NO OTHER WARRANTIES, EITHER EXPRESSED OR IMPLIED, BEYOND THOSE SET FORTH HEREIN, and Alpha Omega Instruments Corp. does not assume any other obligation or liability in connection with the sale or use of said products.

### **Disclaimer of Warranty**

*Alpha Omega Instruments makes no representation or warranties, either expressed or implied, by or with respect to anything in this manual, including, but not limited to, implied warranties of merchantability or fitness for a particular purpose. In no event will Alpha Omega Instruments Corp. be liable for any damages, whether direct or indirect, special, consequential, or incidental arising from the use of this manual. Some states in the USA do not allow the exclusion of incidental or consequential damages. Alpha Omega Instruments Corp. also reserves the right to make any changes to improve the performance of its products at any time and without notice.*

## WARNINGS

### Explanation of graphic symbols



DO NOT TOUCH!



THIS SYMBOL IS INTENDED TO ALERT THE USER TO THE PRESENCE OF IMPORTANT OPERATING AND MAINTENANCE INSTRUCTIONS.

To avoid risk of fire or electrical shock, do not expose the outside surface of the Series 3000 Trace Oxygen Analyzer enclosure to rain or water spray unless the enclosure is rated NEMA 4 (IP66)<sup>1</sup> according to the National Electronics Manufacturers Association. **Never expose the inside of the enclosure to water.**



WHEN POWERED, THE PRESENCE OF UN-INSULATED DANGEROUS VOLTAGES WITHIN THE INSTRUMENT MAY BE OF SUFFICIENT MAGNITUDE TO CONSTITUTE A RISK OF ELECTRICAL SHOCK RESULTING IN INJURY OR DEATH. LEAVE ALL SERVICING TO QUALIFIED PERSONNEL. ***REMOVE ALL POWER SOURCES WHEN INSTALLING OR REMOVING AC POWER OR DATA SIGNAL CONNECTIONS AND WHEN INSTALLING OR REMOVING THE SENSOR, OR ELECTRONICS.***

### RF Disclaimer

This instrument generates and uses small amounts of radio frequency energy, and there is no guarantee that interference will not occur in a particular installation. If this equipment does cause interference to radio or television reception, try to correct the interference by one of more of the following steps:

1. Reorient the receiving antenna.
2. Relocate the instrument with respect to the receiver.
3. Change the AC outlet of the instrument so the instrument and receiver are on different branch circuits.

<sup>1</sup> NEMA stands for the National Electrical Manufacturers Association and the designation IP"XX" signifies European IEC specifications 144 & 529.

---

TABLE OF CONTENTS	PAGE
WARNINGS	ii
SECTION 1.0 INTRODUCTION	1
General Description	1
Measurement Ranges	1
Mechanical Configurations	1
Optional Equipment	2
RS-232C Option	2
RS-485 Option	3
Sample Filter Option	3
Filter Element Accessory	3
Flowmeter Option	3
Pressure Regulator Option	3
Sample Pump Option	3
General Specifications	4
SECTION 2.0 INSTALLATION PROCEDURES	6
Unpacking the Instrument	6
Electrical Installation	6
Wiring the AC/DC Power	6
Main Printed Circuit Board (Figure 1)	7
Oxygen Sensor	8
Wiring Alarm Relays	8
Wiring 4-20 mADC and 0-2 VDC Outputs	9
Wiring to the Optional RS-232C or RS-485 Outputs	10
Wiring to the Optional Remote Sensor Housing	10
SECTION 3.0 SYSTEM DESCRIPTION	11
Patented Ambient Temperature Electrochemical Sensor	11

	Electronic Data Processing	12
	Alarms	13
	On Board Switch Settings	13
	Fail-Safe Operation	14
	Alarm Settings	14
SECTION 4.0	DETERMINING SYSTEM CONFIGURATION	15
	Model Designation	15
SECTION 5.0	OPERATION	17
	Preparation for Operation	17
	AC Input Voltage Selection	17
	Initial Setup	18
	Mounting Configurations	18
	Remote Mounted Sensor Enclosures	19
	Optional Battery Operation	19
	Operating Procedures	21
	Power On	21
	Front Panel Controls and Indicators	21
	Setting the Alarms	22
	Alarm Processing	22
	Auto-Clear Operation	22
	Manual Clear Operation	22
	Timing Out	23
	Over Range	23
	TTL Signal	23
	Manual Range Changing	23
	Gas Sample Pressure Limits	24
	Sample Connections	24

---

	Isolation Valves	24
SECTION 6.0	CALIBRATION PROCEDURES	25
	Initial & Routine Calibration Checks	25
	Calibration Gas	25
	Procedure for Checking Calibration	25
	Zero Adjustment	27
SECTION 7.0	REPLACEMENT OF THE OXYGEN SENSOR	28
	Procedure for Replacing the Oxygen Sensor	28
SECTION 8.0	OPTIONAL SERIAL COMMUNICATIONS RS-232C & RS-485	30
	Baud Rates	30
	Standard Commands	30
	RS232/485 Connections	34
SECTION 9.0	RS485 ENHANCED REMOTE CONTROL COMMANDS	35
	General	35
	Special Commands	36
	Added RS485 Enhanced Commands	37
	RS485 Enhanced Commands	39
APPENDIXES	Appendix A Bench Top/Portable Configuration Part Number BTP	41
	Appendix B Panel Mount Configuration Part Numbers PNL, PNR, & PTX	42-45
	Appendix C Remote Sensor Configuration, Part Numbers BTR & PNR	46
	Appendix D Explosion Proof Electronics/Sensor Configuration Part Numbers EXX	47-49
	Appendix E Explosion Proof Sensor Configuration Part Number BTX & PTX	50-51
	Appendix F MSDS for the 3SEN Oxygen Sensor	52
	Appendix G Wiring to the Series 3000 with an External Switch	54

ADDENDA	Addendum 1	Sensor Auto-Isolation Feature (P/N 3SOL-Auto)	55
	Addendum 2	AC-Actuated 3-way Solenoid Valve (P/N 3-3waySOL-115) Sensor AutoPurge Protection (P/N 3-AutoPurge)	57
	Addendum 3	Sample Line Block & Bleed/Sensor-Isolation Sample Gas Delivery System (P/N 3-BLBL/ISO-SS)	59
	Addendum 4	Internal Datalogger	62
	Addendum 5	High Volume Pump	64

## 1.0 INTRODUCTION

### 1.1 General Description

The Series 3000 Trace Oxygen Analyzer is a microprocessor controlled instrument that can be configured with either one or three trace oxygen ranges. The instrument is powered from either 115/230 VAC, 50-60Hz, or 18-32 VDC input. It also can be battery powered if the Battery Operation Option is purchased. Oxygen values are displayed on a 10.2 mm (0.4") high 4-1/2 digit liquid crystal display (LCD). The oxygen sensor is normally mounted in a sensor housing that contains 1/4" gas inlet and outlet compression fittings. For the bench top/ portable instrument, the sensor housing is located on the rear panel of the electronics enclosure. For instruments equipped with a remote sensor enclosure, the sensor housing is either mounted on the enclosure, as is the case with the watertight NEMA 4X (IP 66) and general purpose NEMA 1 enclosures, or inside the enclosure for the explosion proof, NEMA 7 types.

The front panel of the Series 3000 Trace Oxygen Analyzer contains five switches that provide access to the analyzer's settings. The instrument is equipped with three oxygen alarm relays and one status alarm relay. All four relays are Form C (SPDT) types rated at 10 amps at 115/230 VAC and 30 VDC. The relays are user configurable for fail-safe operation. In addition to the four alarm contacts, the Series 3000 Trace Oxygen Analyzer has a built-in audible alarm and three red LED's for visual indication of an oxygen alarm condition. The audible alarm may be manually canceled at anytime. If the audible alarm is canceled, and the alarm event continues, indications of this condition will still be available through the front panel LED's and relay contact(s).

The Series 3000 Trace Oxygen Analyzer comes equipped with two standard analog outputs, 4-20 mA DC and 0-2 VDC. For enhanced communications, the Series 3000 Trace Oxygen Analyzer can also be equipped with optional RS-232C or RS-485 serial communications. Another standard feature of the Series 3000 Trace Oxygen Analyzer is autoranging (three range analyzers only). This feature provides the analyzer with the capability to move either up or down the ranges of measurement automatically.

### 1.2 Measurement Ranges with Range Code Designations (codes contained in model number).

<u>Range Code</u>	<u>Single Ranges</u>	<u>Range Code</u>	<u>Multiple Ranges</u>
Z	0-10,000 ppm	Y	0-100/1,000/10,000 ppm
A	0-5,000 ppm	F	0-50/500/5,000 ppm
B	0-1,000 ppm	G	0-10/100/1,000 ppm
C	0-100 ppm	H	0-5/50/500 ppm
D	0-50 ppm	I	0-1/10/100 ppm
E	0-10 ppm		

### 1.3 Mechanical Configurations

#### Mechanical Code

##### **BTP**

#### Description

The analyzer enclosure is suitable for bench top or portable use and comes equipped with a carrying handle. The sensor housing is mounted on the rear of the enclosure (refer to Appendix A). The enclosure is fabricated from polycarbonate with a watertight, NEMA 4X (IP66) rating.

#### Mechanical Code

##### **PNL**

#### Description

Similar to the BTP configuration with the addition of an aluminum panel frame. It is **not** equipped with a carrying handle (refer to Appendix B). The enclosure is made from polycarbonate with a watertight, NEMA 4X (IP66) rating.



**BTR**

This configuration is comprised of two enclosures (electronics and sensor). The electronics enclosure is suitable for bench top installations and is made from polycarbonate with a watertight, NEMA 4X (IP66) rating. The sensor housing is also made from polycarbonate and carries a NEMA 4X (IP66) rating (refer to Appendix C). Three feet of interconnecting cable is standard with additional cabling (up to 4,000 feet) available at the time of order.

**PNR**

Similar to the BTR configuration with the exception of the electronics enclosure that is equipped with a steel panel frame.

**BTX**

This configuration is comprised of two enclosures (electronics and sensor). The electronics enclosure is suitable for bench top installations and is made from polycarbonate with a watertight, NEMA 4X (IP66) rating. The oxygen sensor housing is mounted inside an aluminum, explosion proof enclosure rated NEMA 7 for use in areas requiring Class 1, Groups B,C,D; Class II, Groups E,F,G; and Class III protection (refer to Appendix E). Three feet of interconnecting cable is standard with additional cabling (up to 4,000 feet) available at the time of order.

**PTX**

Similar to the BTX configuration with the exception of the electronics enclosure that is equipped with an aluminum panel frame.

**EXX**

In this configuration both the electronics and sensor are mounted within a cast aluminum explosion proof enclosure rated NEMA 7 for use in areas requiring Class 1, Groups B,C,D; Class II, Groups E,F,G; and Class III protection (refer to Appendix D).

#### **1.4 Optional Equipment**

The Series 3000 Trace Oxygen Analyzer Monitor incorporates standard features that make it suitable for many applications. However, for certain requirements, the user may desire to augment the capabilities of the instrument by equipping it with one or more options.

##### **1.4.1 Data Logger**

An optional built-in data logger can be purchased as an option with the Series 3000 Trace Oxygen Analyzer. Please refer to Addendum 4 for further information.

##### **1.4.2 RS-232C Option (PN 3RS2)**

The RS-232C option is installed at the factory and is designed for applications where enhanced serial communications is required between the Series 3000 Trace Oxygen Analyzer and a host system. The maximum distance between monitor and host is 50 feet.

##### **1.4.3 RS-485 Option (P/N 3RS4)**

The RS-485 option is installed at the factory and is designed for applications where enhanced serial communications is required between one or several analyzers and a host system over the same communications channel. The RS-485 format allows both sending and receiving of signals over greater distances than RS-232C, making it ideal for installations where the analyzer(s) are located at distances

greater than 50 feet from the host. The maximum distance recommended between outermost devices is 4,000 feet.

**1.4.4 Sample Filter Option (P/N 395S)**

Miniature T-type 316 stainless steel filter with 1/4" compression fittings. Recommended when particle loading exceeds 3 mg/ft<sup>3</sup> and hydrocarbon mist exceeds 0.7 mg/ft<sup>3</sup>. Installed at the factory unless otherwise specified by the customer.

**1.4.5 Filter Element Accessory (P/N 3FBX)**

Filter element for the 395S

**1.4.6 Flowmeter Option (P/N 3FLM)**

Durable one piece clear acrylic flowmeter with easy to read scale in liters per minute.

**1.4.7 Pressure Regulator Option (P/N 3PRR)**

Stainless steel pressure regulator with a 3,000 psig inlet capacity and an adjustable outlet pressure range of 0-5 psig. The regulator does not include a gauge.

**1.4.8 Sample Pump Option (P/N 3PMP)**

Sample pump designed for applications where the sample is under a slight vacuum (12 in. Hg) or at atmospheric pressure. In either case, the sample pressure is insufficient to transport the sample through the sensor housing.

**1.4.9 High Capacity Sample Pump (P/N 3PMPH)**

High capacity pump to be used when the sample is under a vacuum of 5 in Hg (maximum), or at atmospheric pressure. Due to the high capacity of this pump, a valve should be installed on the discharge side of the sensor housing to regulate the flow rate.

**1.4.10 Sensor Heater Option (P/N 3HTR)**

Sensor heater used for applications where low ambient temperatures are encountered, or where constant temperature conditions within the enclosure are desired. This option is available with the explosion proof configurations only and will not work under battery power.

**1.4.11 Battery Operation (P/N 3BAT)**

The Series 3000 can be equipped so that it may be powered from a normal AC/DC source as well as an optional built-in battery pack. The batteries are installed at the factory and are designed for applications where the user desires to power the analyzer for short periods using the batteries. With this option, the Series 3000 will operate for a period of at least 8 hours. If equipped with a sample pump, operating time will be reduced to less than four hours of continuous use. Other items such as alarms, use of the 4-20 mADC output, etc. could reduce the time intervals between battery recharging. The Series 3000 is equipped with a "smart charging" capability for the Nickel Metal Hydride (NiMH) battery pack. Smart charging eliminates the risk of the battery pack being over-charged (not available with explosion proof systems). To achieve a full-charge after the batteries have been discharged, allow for approximately 16 hours of charging time.

## 1.5 General Specifications

### Measurement Ranges

Please refer to Section 1.2

### Accuracy

$\pm 1\%$  of full scale under steady state temperature and pressure conditions. For the 0-1 ppm range the overall accuracy is  $\pm 5\%$  full scale under steady state conditions.

### Sensor Type

Ambient Temperature Electrochemical Sensor.

### Temperature Compensation

Standard.

### Response Time

90% of full scale response in <10 seconds nominal. The recovery time for ranges < 10 ppm will depend on the prevailing conditions including tubing type, length of time instrument was in an over range condition, ambient temperature, etc.

### Sensor Inputs

One.

### Sensor Mounting

Either attached to the electronics enclosure or located remotely.

### Display

10.2 mm (0.4") high, 4 digit liquid crystal display. Resolution 0.01 ppm on the 0-1 ppm range, 0.1 ppm on ranges up to and including 100 ppm, and 1.0 ppm for ranges in excess of 100 ppm.

### Input Power

115/230 VAC, 50-60Hz or 18-32 VDC.

### Optional Battery Operation

NiMH batteries provide up to eight hours of continuous operation (see **precautionary note on page 19**).

### Standard Outputs

4-20 mA DC and 0-2 VDC.

### Optional Digital Interfaces

RS-232C or RS-485.

### Audible Alarm

Internal buzzer.

### Audible Alarm Cancel

Front panel switch.

### Oxygen Alarm Relays

Three (3) SPDT Form C contacts rated 10 A @ 30V DC/115/230 VAC. Alarm clearing is user configurable for either manual or automatic.

### Instrument Status Alarm Relay

1 SPDT Form C rated identical to above.

### Open 4-20 mA loop status Alarm Operating Temperature

Open collector (drain) output at terminal #10.  
0° to 50°C (32° to 122°F).

Electronics Control Unit

Light gray polycarbonate with a hinged clear front cover  
rated NEMA 4X (IP 66).

Dimensions for the Standard  
Polycarbonate Electronics  
Enclosure.

9.45 inches (240.0 mm) height  
6.50 inches (165.1 mm) width  
6.20 inches (157.5 mm) depth

Weight (Portable Instrument)

Approximately 11 pounds (4.98 kg.) for the Benchtop  
Configuration

Alpha Omega Instruments Corp. reserves the right to change or modify its product specifications without notice.

## SECTION 2.0 INSTALLATION PROCEDURES

### 2.1 Unpacking the Instrument

Upon opening the shipping container, carefully unpack the instrument to check if the outer surfaces have been damaged. If so, report the findings immediately to Alpha Omega Instruments who will provide further instructions.



**NOTE: IF DAMAGE HAS BEEN FOUND, DO NOT PROCEED FURTHER BUT INSTEAD, CONTACT THE FACTORY.**

If there is no apparent damage, check the contents to ensure all items were shipped. In some cases, items may be backordered. All damage and shortage claims must be made known to Alpha Omega Instruments within 10 days after receipt of shipment.

There are six screws on the Series 3000 Trace Oxygen Analyzer that fasten the clear cover to the polycarbonate enclosure. Loosen these screws to disengage them from the enclosure, and open the cover exposing the front panel membrane switches. The membrane panel is installed on a metal backing plate that is hinged and swings out in the same direction as the cover. Swing out the membrane panel and check inside the control unit to make sure no components have been loosened or dislodged. **If there are loose or dislodged components, notify the factory for further instructions.** If all is found to be satisfactory, the installation procedure can begin.

### 2.2 Electrical Installation

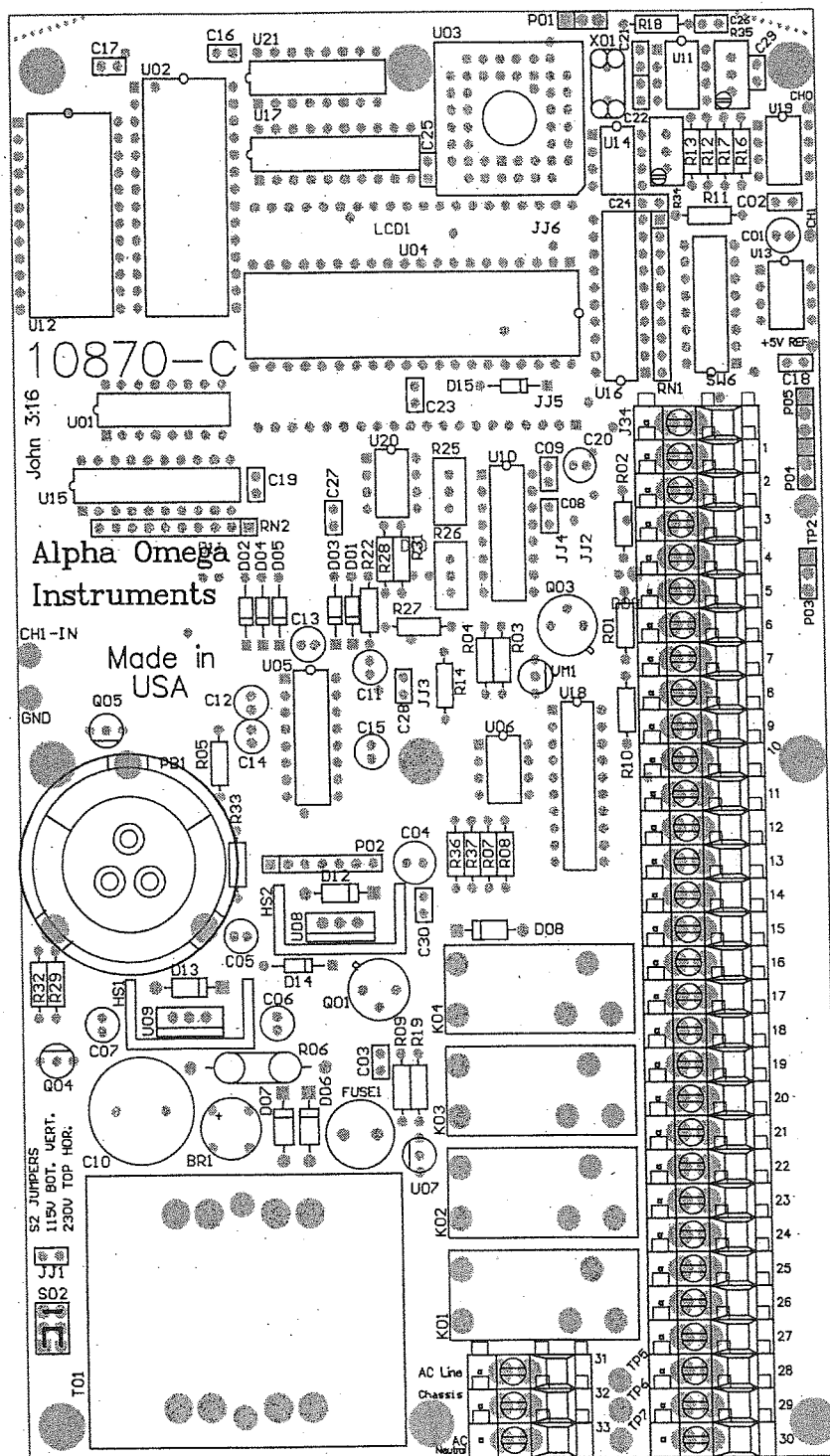


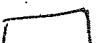
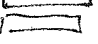

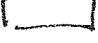

**ELECTRICAL INSTALLATION SHOULD BE PERFORMED BY A CERTIFIED ELECTRICIAN AND SHOULD COMPLY WITH APPLICABLE FEDERAL, STATE, OR LOCAL ELECTRICAL SAFETY CODES.**

The Series 3000 Trace Oxygen Analyzer is shipped with a power cord. Some installations may require wiring through conduit into the electrical hub on the rear panel (where the existing power cord is installed). For such installations, removal of the existing power cord can be easily accomplished as described in section 2.2.1. The position of jumper S2, which is located at the lower left quadrant of the printed circuit board determines the line voltage setting. The default setting is 115 VAC, 50-60Hz. **If the AC input voltage is changed in the field, please refer to Section 5.1.1 for instructions.**

#### 2.2.1 Wiring the AC/DC Power in Place of the Existing Power Cord

Referring to the printed circuit board diagram (FIGURE 1.0) on the next page, locate the AC power terminals 31, 32, and 33. Each connector is equipped with a screw terminal wire holder to facilitate insertion or removal of the wire from the connector. Strip away approximately 0.25 inches (6.0 mm) of insulation from each of the three conductors and then connect AC line, AC neutral, and chassis ground to each connector. Tighten down on each screw turning clockwise to securely fasten each conductor. If the primary power to the instrument is direct current (DC), wire to terminals 29 (BAT+) and 30 (BAT-). **Please see cautionary note on page 19 regarding battery operation.**



 R0 BLANK  
 R10 = 100K  
 R10 =  
 R15 →  
 R200K

885K

Figure 1

### 2.2.2 Oxygen Sensor

Wiring of the oxygen sensor has been done at the factory. For information regarding sensor replacement please refer to Section 7.0.

### 2.2.3 Wiring Alarm Relays

In addition to the cable used for the AC/DC power to the Control Unit, access to the control signals generated from the Series 3000 Trace Oxygen Analyzer is accomplished using signal cabling. This cable is installed through the output cable gland on the rear of the electronics enclosure. The number of conductors needed is determined by the number of functions to be controlled.

The Series 3000 Oxygen Analyzer is equipped with four single pole double throw (SPDT) relays with Form C contacts rated at 10 amperes @ 30 VDC and 115/230 VAC. All alarm relays are user configurable with the three oxygen alarms defaulting to factory setting of **high** oxygen alarms. To configure any of the three oxygen alarm relays to act as low alarms, please refer to Section 5.2.3. As a reminder, Alarm 4 which is not displayed as a discrete alarm on the front panel, is the instrument status alarm.

The technique for wiring to the connectors is identical to that discussed in Section 2.2.1. The wiring configuration is as follows:

<u>Terminal</u>	<u>Alarm 1 Relay</u>
26	Common Contact
27	Normally Open Contact
28	Normally Closed Contact
 <u>Alarm 2 Relay</u>	
23	Common Contact
24	Normally Open Contact
25	Normally Closed Contact
 <u>Alarm 3 Relay</u>	
20	Common Contact
21	Normally Open Contact
22	Normally Closed Contact
 <u>Instrument Status Alarm</u>	
17	Common Contact
18	Normally Open Contact
19	Normally Closed Contact

TABLE 1.0 on the next page illustrates the various wiring configurations for the four alarms in the Series 3000 Trace Oxygen Analyzer based on whether the alarms are going to be configured for fail-safe or non fail-safe operation.

Contacts shorted for each Alarm Relay	Alarm ON	
	Fail-safe ON	Fail-safe OFF
High or Low O <sub>2</sub> Alarm1 / Relay 1	28(NC) to 26(COM)	27(NO) to 26(COM)
High or Low O <sub>2</sub> Alarm2 / Relay 2	25(NC) to 23(COM)	24(NO) to 23(COM)
High or Low O <sub>2</sub> Alarm3 / Relay 3	22(NC) to 20(COM)	21(NO) to 20(COM)
Low Battery or Instrument Status/ Relay 4	19(NC) to 17(COM)	18(NO) to 17(COM)

TABLE 1.0

Each of the aforementioned alarm relays can be individually configured for fail-safe operation by means of a DIP switch located on the main printed circuit board (refer to Section 3.3). If the instrument is equipped with optional RS-232C or RS-485 communications, the alarms can also be controlled via these outputs. See the caution note below.



IF THE SERIES 3000 TRACE OXYGEN ANALYZER IS  
EQUIPPED WITH EITHER RS-232C OR RS-485  
COMMUNICATIONS, PLEASE REFER TO SECTION 8.0.

#### 2.2.4 Wiring 4-20 mADC and 0-2 VDC Outputs

The Series 3000 Trace Oxygen Analyzer has two standard linear outputs, 4-20 mADC and 0-2 VDC over the instrument's range(s). These outputs can be measured simultaneously. To wire to the 4-20 mADC output, wire to terminals 12 (4-20) and 13 (AGND). To wire to the 0-2 VDC output, use terminals 8 (positive {labeled DAC}) and 9 (negative {labeled AGND}). The terminals can be found on the right side of the printed circuit board (refer to FIGURE 1.0) **Note: If a jumper wire is in place between terminals 12 and 13, it must be removed prior to using the 4-20 mADC output.**



NOTE: IF THE 4-20MA DC OUTPUT IS NOT GOING TO  
BE USED, IT SHOULD BE SHORTED TO AVOID AN  
OPEN LOOP WARNING VIA TERMINAL 10 (B-LO)



### 2.2.5 Wiring to the Optional RS-232C or RS-485 Outputs.

The RS-232C and RS-485 digital communications are options with the Series 3000 Trace Oxygen Analyzer. Unlike the analog outputs, the Series 3000 Trace Oxygen Analyzer can be ordered with either option, but not both. To wire for either the RS-232C or RS-485, use terminals 14 (TXD) for transmit and 15 (RXD) for receive. **Note: You must connect the GND terminal for RS-232C and RS-485 for the instrument to work properly.** Further details on these communication channels are contained in Section 8.0. Section 8.0 is included as part of this manual even if the Series 3000 Trace Oxygen Analyzer has not been equipped with either of the two aforementioned digital communication loops.

### 2.2.6 Wiring to the Optional Remote Sensor Housing

Figure 2.0 shows the layout and connections required to wire to the optional remote sensor housing. Please refer to Section 5.1.4 for additional information.

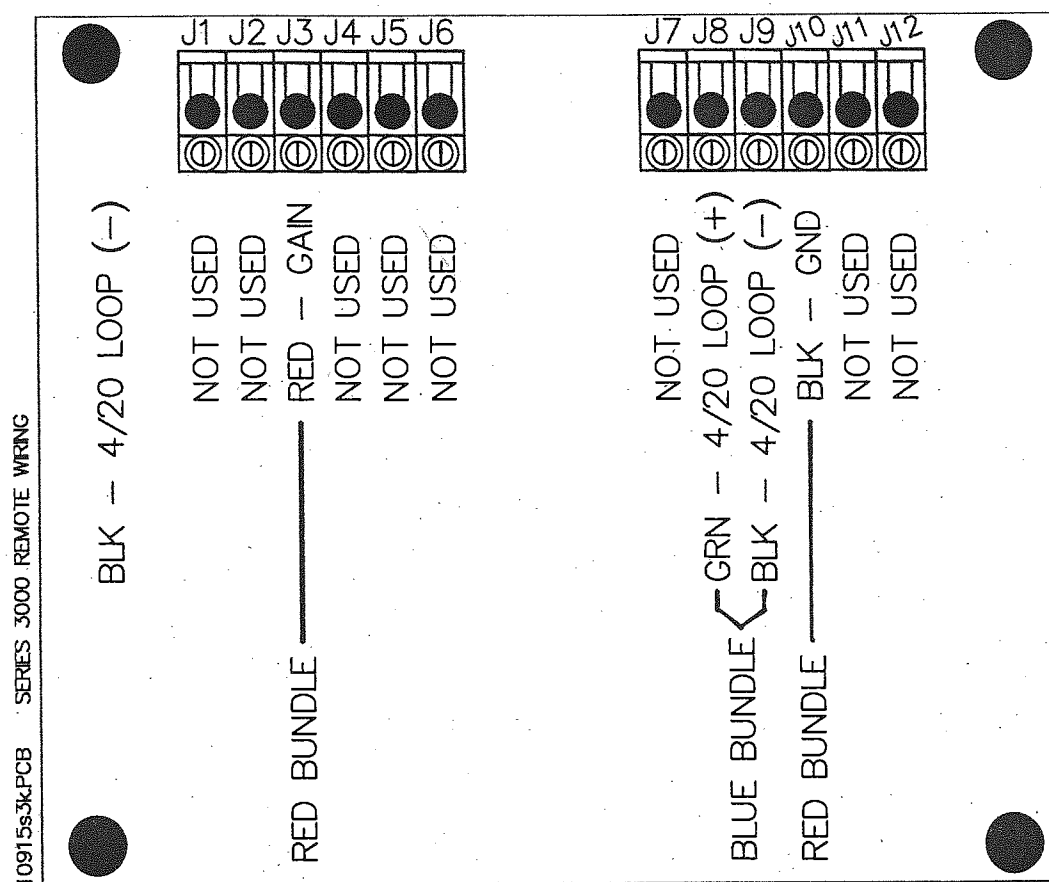


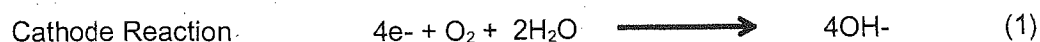
Figure 2.0

## SECTION 3.0 SYSTEM DESCRIPTION

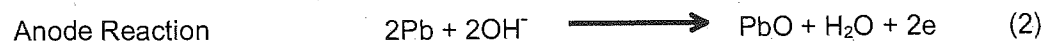
### 3.1 Patented Ambient Temperature Electrochemical Sensor

The Series 3000 Trace Oxygen Analyzer features an advanced trace oxygen sensor. This sensor is a lead-oxygen battery comprised of a lead anode, a gold plated cathode, and an electrolyte consisting of potassium hydroxide. All types of electrochemical transducers have three primary components; a cathode, anode, and electrolyte. In the Alpha Omega Instruments advanced oxygen sensor, the cathode is the sensing electrode or the site where chemical reduction of the oxygen takes place.

The chemical reactions are as follows:



In the above reaction, four electrons combine with one oxygen molecule to produce four hydroxyl ions. This cathodic half-reaction occurs simultaneously with the following anodic half-reaction:



The anode (lead) is oxidized (in a basic media) to lead oxide and in the process, two electrons are transferred for each atom of lead that is oxidized. The sum of the half-reactions (1) and (2) results in the overall reaction (3):



From this reaction it can be seen that the sensor is very specific for oxygen providing there are no gaseous components in the sample stream capable of oxidizing lead. The only likely compounds that meet this requirement are the halogens (iodine, bromine, chlorine, and fluorine).

In reaction (1), four electrons are transferred for each oxygen molecule undergoing reaction. In order to be reacted, and oxygen molecule must diffuse through both the sensing membrane and the thin film of electrolyte maintained between the sensing membrane and the upper surface of the cathode. The rate at which oxygen molecules reach the surface of the cathode determines the electrical output. This rate is directly proportional to the concentration of oxygen in the gaseous mixture surrounding the sensor cell.

### 3.2 Electronic Data Processing

FIGURE 3.0 shown below is a simplified block diagram of the electronics measuring and display system for the Series 3000 Trace Oxygen Analyzer.

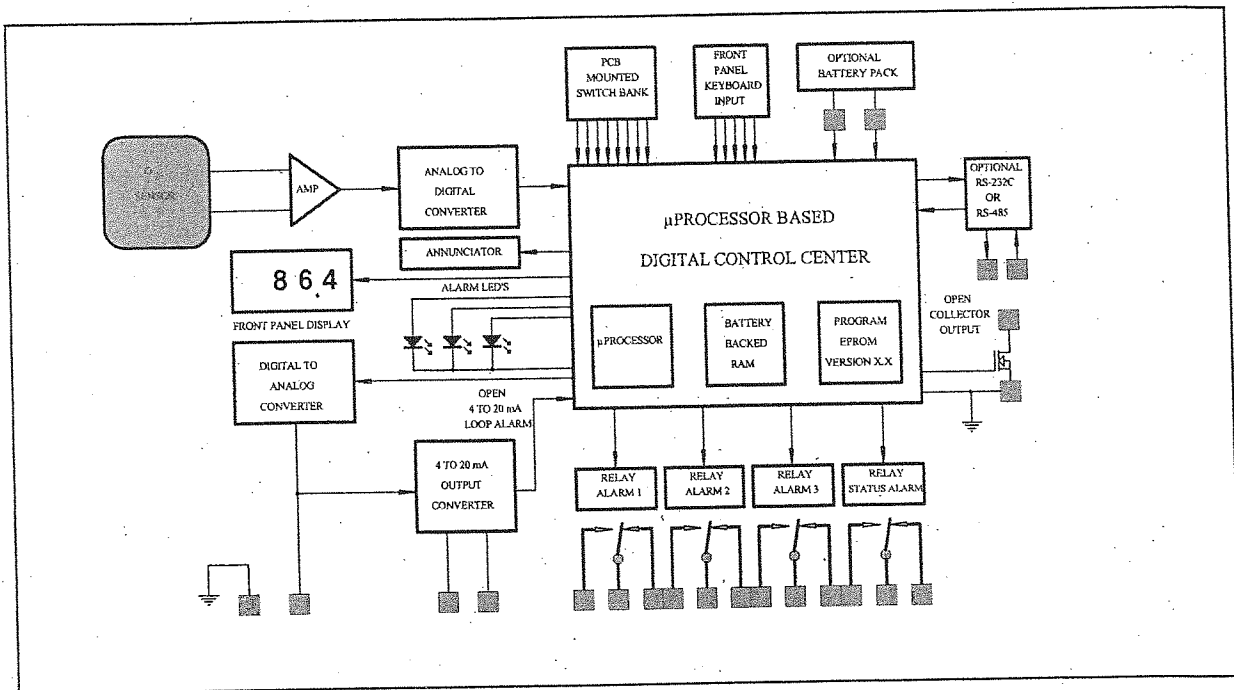


FIGURE 3.0

#### 3.2.1 Digital Control Center (DCC)

The block diagram depicts how the microprocessor based DCC interfaces with all the inputs and outputs of the system. Central to the operation of the instrument is the oxygen sensor. The current output from the sensor is applied to the input of a buffer amplifier that converts the current to a voltage and produces a low impedance signal proportional to the sensor output. This voltage is then inputted to a 4-1/2 digit analog to digital converter. The analog to digital converter forms a binary representation of the sensor output for use by the DCC in all of its decision making functions, and for controlling its outputs.

What the DCC does with the sensor input data is determined largely by the inputs provided by the operator. The printed circuit board mounted switch bank (SW-6) allows the operator to input information for use by the DCC regarding the fail-safe condition of the output alarm relays. Similarly, the front panel keyboard switches provide adjustment capabilities of up to three oxygen level alarm points. And, the optional RS-232C or RS-485 serial interface allows for operator input of this same information and much more. The DCC microprocessor handles all of the input information under control of the program EPROM (Erasable Programmable Read Only Memory) and stores input variables, such as alarm set points, in a battery backed RAM (Random Access Memory). This RAM remembers the operator selected alarm set points when power is restored should an AC power outage occur.

The DCC always controls two analog outputs that are directly proportional to the sensor output. The first of analog output is an analog voltage output of 0 to 2 VDC from the digital to analog converter over

the range(s) of the instrument. Also, a second analog output tracks the 0 to 2 VDC output to produce a self powered 4 to 20 milliamp loop for external data logging and monitoring. Loop resistance, including wiring, can be as high as 800 ohms even when operating with the optional Battery.

The value of the oxygen sensor output is displayed for the operator in a 4 digit liquid crystal display (LCD) over the range(s) of the analyzer. This same display is used for operator input of alarm set points and any calibration data. The display is the primary means that the DCC uses to communicate to the operator what it is doing, and how it is responding to the operators inputs. In a similar fashion, the DCC also controls the operation of an annunciator for audible feedback to the operator and three light emitting diodes (LED's) for visible feedback of system operation.

### 3.2.2 Alarms

One of the primary functions of the instrument is to alert the user when alarm conditions have occurred. To this end, four alarm relays, each capable of switching up to 10 Amperes, are controlled by the DCC for operator use. These isolated relays are single pole double throw (SPDT) relays for maximum user flexibility. Under control of the DCC, these relay outputs, along with the simultaneous LED and annunciator operation, serve to give maximum notification to the user of an alarm condition.

An "open collector" output, more appropriately called an "open drain output", provides an additional level of operator output for signaling alarm purposes. This "open drain output" from a 50 volt MOSFET transistor, is normally open, but will close or short to ground to indicate an alarm condition if the 4 to 20 milliamp loop is open.

The front panel display and Relay #4 will indicate a low battery if the instrument is equipped with the Battery option.

### 3.3 On Board Switch Settings

Setting the alarms for fail-safe operation and automatic alarm clearing can be accomplished by using an on board switch bank (SW6) located in the upper right quadrant of the printed circuit board (refer to FIGURE 4.0). This switch bank has eight (8) individual switches for configuring the Series 3000.

The Series 3000 Trace Oxygen Analyzer is shipped from the factory with switch #8 in the "ON" position "user configuration" mode. In this setting, the analyzer will be configured using battery backed configuration information. This is the default setting. This means the analyzer will ignore the switch settings altogether and "boot" up to user configured memory. If switch #8 is in the "OFF" position "switch settings" mode, the analyzer will read the other switches in order to configure the analyzer when power is applied or, a warm boot has occurred. The user configured memory is that which is set up via the front panel or external communications loop (refer to Section 5.2.).

### 3.3.1 Fail-Safe Operation

The Series 3000 Trace Oxygen Analyzer will "boot" up based on the settings of oxygen alarm switches #1 through #4. Switches #1 through #4 control the fail-safe operation for each of the four alarm relays. Each switch must be turned "ON" to be fail-safe (refer to FIGURE 4.0). In the fail-safe mode, upon an alarm condition, the corresponding relay will change state (either open or closed) upon loss of AC power. The factory settings for switches #1 through #4 is "OFF" (normal operation or non fail-safe).

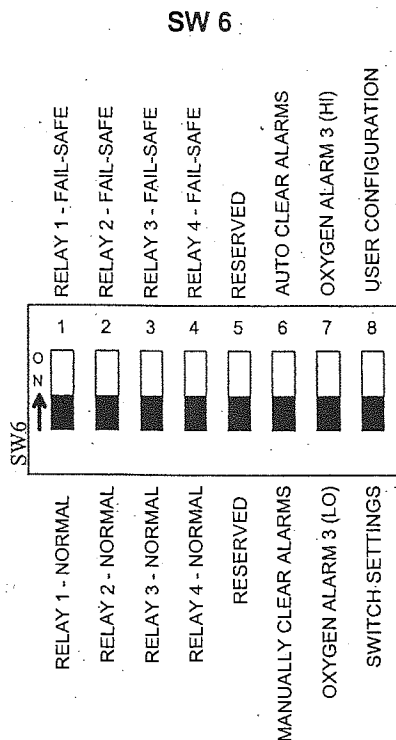


FIGURE 4.0

### 3.3.2 Alarm Settings

With switch #8 in the "OFF" position, the Series 3000 Trace Oxygen Analyzer defaults to configuring Oxygen Alarms 1 & 2 as high alarms. Alarm 3 will be configured based on the setting for switch 7. With switch #8 in the "ON" position, all user settings will be retained. Note: to read the switches while operating, just perform a "warm boot" with SW6, switch #8 in the OFF position. (See Section 5.2.1)

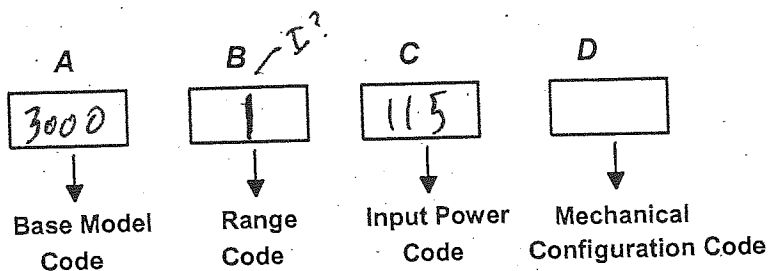


**IF ANY ALARM IS NOT GOING TO BE USED, IT SHOULD BE DISABLED. TO DO SO, FIRST CONFIGURE EACH ALARM AS A LOW ALARM, AND THEN SET THE ALARM TO 0.00**

## SECTION 4.0 DETERMINING SYSTEM CONFIGURATION

### 4.1 Model Designation

Before proceeding to the following sections, it is important to determine the system configuration for the selected analyzer. To best accomplish this, refer to the purchase order to obtain the part number that was ordered and compare it to the range, input power configuration, and mechanical configuration shown below.



<u>BASE MODEL</u>	
Base Model Code	
<b>A</b> 3000	Series 3000 Trace Oxygen Analyzer with 3 alarm relays, status alarm relay, digital display, audible alarm, NEMA 4X (IP66) enclosure, 4-20 mADC and 0-2 VDC recorder

<u>OXYGEN RANGES</u>	
Range Code	Single Ranges Available
<b>B</b> Z	0-10,000 ppm
A	0-5,000 ppm
B	0-1,000 ppm
C	0-100 ppm
D	0-50 ppm
E	0-10 ppm
Y	0-100/1,000/10,000 ppm
F	0-50/500/5,000 ppm
G	0-10/100/1,000 ppm
H	0-5/50/500 ppm
I	0-1/10/100 ppm ✓

**Input Power**

**INPUT POWER CONFIGURATIONS**

**Code**

115

115 VAC/50-60 Hz

115B

115 VAC/50-60 Hz with NIMH Battery<sup>1</sup>

230

230 VAC/50 Hz

230B

230 VAC/50 Hz with NIMH Battery

<sup>1</sup> The Battery option is available in the bench top/portable (BTP) version only.

**Mechanical Configuration**

**Mechanical Configurations**

**Code**

BTP

Bench top/portable design with carrying handle.

PNL

Panel mounted electronics enclosure.

BTR

Bench top electronics enclosure without carrying handle. Flow through sensor housing is mounted to a NEMA 4X (IP 66) sensor transmitter. Three feet of interconnecting cable connects the electronics enclosure with the sensor transmitter. Additional cable up to a maximum length of 4,000 feet, is available.

PNR

Panel mounted electronics enclosure. The sensor housing is mounted to a NEMA 4X (IP 66) sensor transmitter. Three feet of interconnecting cable connects the electronics enclosure with the sensor transmitter. Additional cable, up to a maximum length of 4,000 feet, is available.

BTX

Bench top electronics enclosure without carrying handle. The sensor housing is mounted in a separate explosion proof enclosure rated NEMA 7 for use in areas requiring Class I, Groups B,C,D; Class II, Groups E,F,G; and Class III protection. No interconnecting cable is provided unless requested at the time of order. Cable, up to a maximum length of 4,000 feet, is available.

PTX

Panel mounted electronics enclosure. The sensor housing is mounted within a separate explosion proof enclosure rated NEMA 7 for use in areas requiring Class I, Groups B,C,D; Class II, Groups E,F,G; and Class III protection. No interconnecting cable is provided unless requested at the time of order. Cable, up to a maximum length of 4,000 feet, is available.

EXX

Electronics and sensor housing are mounted together in a single NEMA 7 Explosion Proof Enclosure rated for Class I, Groups B,C,D; Class II, Groups E,F,G; and Class III.

## SECTION 5.0 OPERATION

### 5.1 Preparation for Operation

#### 5.1.1 AC Input Voltage Selection

At the time of shipment, the Series 3000 Trace Oxygen Analyzer is set up to operate on the line voltage specified in the purchase order ( if the Series 3000 has been equipped for battery operation, refer to page 19 for important instructions). If the line voltage is not specified, the instrument will be configured for operation on 115 VAC, 50-60Hz. If the instrument is going to be powered from an external DC power source, move on to the next section.

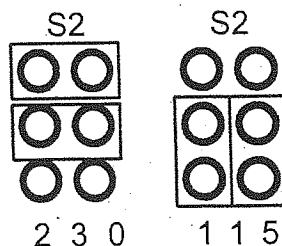
The input voltage can be changed in the field by changing jumper (S2) located on the lower left quadrant of the printed circuit board (refer to FIGURE 1.0) When the Series 3000 is configured for operation on 115 VAC, it contains a 0.5 ampere slow blow fuse (fuse type is Wickman 374050004). For 230 VAC operation, a 3/4 ampere slow blow fuse should be used.



**BE SURE TO USE THE APPROPRIATE FUSE RATING IF THE INSTRUMENT IS CHANGED TO A DIFFERENT AC LINE VOLTAGE .**

Changing the AC input can be done as follows:

1. Disconnect the Series 3000 Trace Oxygen Analyzer from all AC power.
2. Swing out the front panel to gain access to the main printed circuit board (refer to Section 2.1 for instructions). ***For explosion proof instruments, removal of the cover bolts must be done to gain access to the inside of the instrument..***
3. Examine the jumpers on the main circuit board. Shown below are the two ways of installing the AC input selection jumpers at S2.



4. To change the AC configuration, remove the jumpers and place them according to the above diagram.
5. Remove the fuse located on the main printed circuit board (refer to FIGURE 1.0) and replace it with one of the proper value for the AC input voltage selected.
6. Reassemble the instrument and proceed to the next section.



### 5.1.2 Initial Setup



IN GENERAL, IT IS VERY IMPORTANT THAT ELECTROCHEMICAL OXYGEN SENSORS BE KEPT SHORTED WHEN POWER IS OFF. THE PURPOSE OF SHORTING THE SENSOR IS TO PROVIDE A LOW RESISTANCE CURRENT PATH THAT FACILITATES THE ELECTROCHEMICAL CONVERSION OF OXYGEN DESCRIBED IN SECTION 3.1. WITHOUT SHORTING THE SENSOR, EXCESS OXYGEN BUILDS UP ON THE CATHODE SURFACE, AS WELL AS IN THE ELECTROLYTE, PROLONGING CONSIDERABLY THE TIME IT TAKES FOR THE INSTRUMENT TO PROVIDE ACTUAL OXYGEN MEASUREMENTS. IF THE OXYGEN SENSOR IS EXPOSED TO EVEN SMALL CONCENTRATIONS OF OXYGEN WITHOUT BEING SHORTED, RESUMPTION OF NORMAL OPERATION WILL BE SIGNIFICANTLY PROLONGED. AS A RESULT, INCORPORATED INTO EACH SERIES 3000 TRACE OXYGEN ANALYZER ARE PROVISIONS TO AUTOMATICALLY KEEP THE SENSOR SHORTED WHEN THE INSTRUMENT IS NOT UNDER POWER.

The Series 3000 Trace Oxygen Analyzer is essentially ready to use out of the shipping container. The analyzer has been calibrated at the factory and, under normal conditions, recalibration should not be required at initial start-up. However, due to the rigors of shipment, it is possible that settings within the instrument could change and, as a result, it is highly recommended that the calibration be checked prior to initial startup. **Isolation valves have been installed on the input and output of the sensor housing to keep the sensor inerted during shipping. Do not open these valves until ready to process the sample gas through the sensor housing. When the instrument is not in use, keep the sensor housing inerted.**



**THOUGH IT IS NOT A NECESSITY, IT IS HIGHLY RECOMMENDED THAT THE CALIBRATION OF THE ANALYZER BE CHECKED PRIOR TO INITIAL STARTUP. THE ANALYZER HAS BEEN FULLY CALIBRATED AT THE FACTORY.**

### 5.1.3 Mounting Configurations

**Bench top/Portable (BTP Configuration)** The BTP is the basic Series 3000 Trace Oxygen Analyzer configuration that has the sensor housing mounted on the rear panel of the electronics enclosure. The analyzer is designed for either bench top or portable applications. All gas and electrical connections are located on the instrument's rear panel for ease of access.

**Panel Mounting (PNL)-** Like its BTP counterpart, the sensor housing is mounted on the rear panel of the electronics enclosure. In the PNL configuration, a panel mounting frame is supplied. The panel cutout dimensions are provided in Appendix B. Make the appropriate panel modifications as indicated in the drawing.

**Remote Sensor Mounting-** There are several remote sensor mounting configurations for Series 3000 Trace Oxygen Analyzer. Check the purchase order to determine what mechanical configuration designator was used to designate the configuration. The various mechanical configurations are described in Section 4.1 and are shown in the Appendices.

#### 5.1.4 Remote Mounted Sensor Enclosures

For analyzers equipped with remote mounted sensor enclosures, the electronics control unit and remote mounted sensor enclosure need to be connected via interconnecting cable. If a standard length of cable is ordered with the instrument (3 feet), wiring to the electronics control unit has been done at the factory. For all nonstandard lengths, the cabling will be shipped without being terminated. Please refer to Figure 1.0 to locate the various terminals for connecting the sensor, alarms, outputs, pump, heater, etc. Figure 5.0 shows the terminal connections for the remote sensor enclosure. Please refer to this diagram when attempting to interconnect the electronic control unit with the remote sensor enclosure.

#### Optional Battery Operation



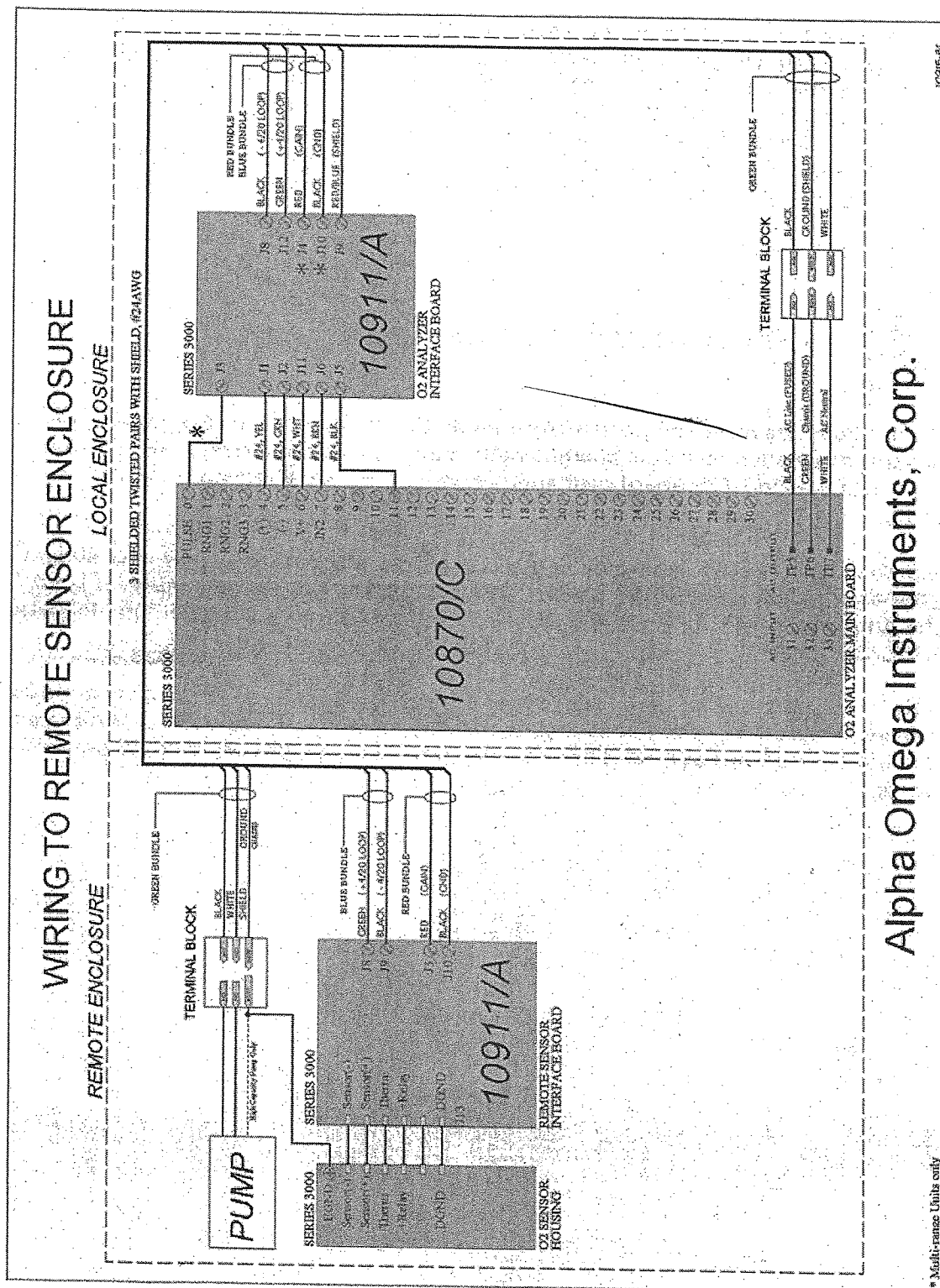
#### NOTE FOR BATTERY OPERATION

If the Series 3000 has been equipped with optional NiMH batteries, it is designed to provide up to eight hours of operation on a fully charged set of batteries (without pump). With a pump, one may expect to obtain up to 3-4 hours of continuous operation before charging of the batteries will be necessary.

The batteries should be fully charged upon receipt of the analyzer. If not, the user should recharge the batteries upon initial startup by powering the analyzer from AC power. Allow at least 14 hours of recharging time. **NOTE: THE POWER ON SWITCH MUST BE KEPT IN THE "ON" POSITION DURING CHARGING.**

The battery option should never be used when the analyzer is powered from a separate DC source. This will cause the batteries to overcharge which may cause the batteries to explode. Be certain all wiring (alarms, remote sensor, RS-232C, etc.) has been done before applying AC power to the instrument.

FIGURE 5.0



## 5.2 Operating Procedures

### 5.2.1 Power ON

To apply power to the analyzer, insert the AC plug and turn on the power switch located on the side of the analyzer. The Series 3000 Trace Oxygen Analyzer has battery backed RAM so when the instrument undergoes a cold start, all values, set by the user via the front panel or optional RS-232C and RS-485, will be maintained if switch #8 has previously been set to the "ON" position, otherwise referred to as the user configuration mode (See section 3.3). The cold boot gives the user the opportunity to make sure the microprocessor, internal memory, front panel LED's, and the audible alarm are functioning normally. During a cold start sequence, the instrument's front panel liquid crystal display (LCD) will display a series of dashes in series like [---][---][---], each of the three front panel LED's will blink simultaneously for approximately 5 seconds, and the audible alarm will sound intermittently for as long as the LED's are blinking. After this, the display will briefly show the onboard switch settings such as [|||||]. In this example, switch #8 is ON and all the others are in the OFF positions.

To perform a warm boot and read the internal switch settings, make sure SW6 - switch # 8 is "OFF" and push the front panel UP, DOWN, and Alarm 3 buttons simultaneously. Do not hold the buttons down very long after the display shows the dashes described above. You will see the same sequence as above, however, switch #8 will indicate low. Powering on with switch #8 in the "OFF" position will cause the Series 3000 Trace Oxygen Analyzer to default to the specific switch settings.

### 5.2.2 Front Panel Controls and Indicators

The front panel of the Series 3000 Trace Oxygen Analyzer contains a 4 digit liquid crystal display (LCD), three (3) alarm set push-button switches, three alarm LED's, and up and down push-button switches.

**Liquid Crystal Display:** The primary function of the LCD is to display the concentration of oxygen in the sample being measured in terms of parts per million by volume (ppm). Within approximately five seconds after a cold start, the Series 3000 Trace Oxygen Analyzer will measure and display the oxygen concentration of the sample gas exposed to the sensor. In addition to displaying oxygen values, the LCD indicates certain status levels. When setting an oxygen alarm value, it is also possible to toggle the alarm from high to low to high, etc. The display will show [ HI ] or [ LO ], very briefly upon pressing the up and down arrows simultaneously, indicating either a high or low alarm. Note: this is a toggle function, so if it shows the opposite setting desired, just toggle it back. Then exit the alarm set routine by pressing an alarm button. When the Series 3000 is equipped with the Battery Option, the LCD will display [LOBAT] when battery power has reached the point when normal instrument operation is in jeopardy. To protect important information stored in the analyzer's memory [monitor's memory], the analyzer [monitor] suspends operation of the microprocessor when further operation could corrupt that memory. The microprocessor displays the word HALT on the LCD, then suspends further operation. The microprocessor does not resume operation until power is reapplied and the battery voltage is verified to be high enough to safely take over operation for a short time in the event of a recurring power failure.

When calibrating the Series 3000 Trace Oxygen Analyzer, you will notice that upon initiating that mode, the liquid crystal display momentarily reads [ CAL ] and then the value of the oxygen concentration of the gas being measured is displayed. For further information on calibrating the analyzer, please refer to Section 6.0.

**Oxygen Alarms:** The Series 3000 Trace Oxygen Analyzer is equipped with three (3) oxygen alarms. All are set at the factory as high alarms. Any one of these alarms can be set by the user for operation as high alarms also. Please refer to Section 5.2.3 "Setting the Alarms" for instructions on how to set Alarm 3 for either high or low operation. Note: All alarms are user configurable via SW-6, - switch #8 (refer to section 3.3).

### 5.2.3 Setting the Alarms

Assuming that no alarms are currently activated (no LED's are lit), press the desired alarm switch on the front panel, "Alarm 1", "Alarm 2", or "Alarm 3". The numerical value in the LCD is the existing alarm value associated with that alarm channel. When the alarm switch is pressed, the LED directly above the switch will light indicating that channel is in the alarm set mode. Any of the three Oxygen Alarms can be changed from low to high or vice versa by pressing the up and down arrows simultaneously. When the arrows are pressed simultaneously, the LCD will momentarily display the state of the alarm by indicating "LO" for low alarm and "HI" for high alarm and then resume displaying the actual alarm value.

To set the oxygen alarm values, using the front panel up and down arrows press the down arrow to lower the oxygen alarm value or the up arrow to increase the value. The longer either arrow is held down, the more rapidly the alarm values will scroll in the display. When the value in the display is close to the desired oxygen set point value, it is recommended that pressure be released from the switch. To obtain the final value, apply momentary pressure to the switch to change values in small increments. When finished setting the alarm, press the associated alarm switch. The LED will go off, and the display will indicate the actual oxygen concentration. If more than one alarm value is to be changed, repeat this procedure using the desired alarm channel.

### 5.2.4 Alarm Processing:

When an alarm event takes place, several indications are provided by the Series 3000 Trace Oxygen Analyzer including:

1. The LED associated with the oxygen channel in question will light.
2. An audible alarm will sound.
3. The relay associated with the oxygen alarm in question will change state.

There are two possible conditions that effect the way the instrument will respond to alarm cancellation. One is auto-clear operation and the other is manual clear. The mode of operation is determined by the setting of SW-6 -switch #6.

#### 5.2.4.1 Auto-Clear Operation

In the Auto Clear mode (SW-6 switch #6 is ON), the monitor will automatically reset the 3 indications mentioned above when the alarm condition clears. Whenever an alarm is active, pressing the associated front panel push-button (Alarm 1, Alarm 2, or Alarm 3) will silence the audible alarm. To change the setting for this same alarm, press the button a second time. If more than one alarm is on, the audible will still be canceled. Please note that the Series 3000 Trace Oxygen Analyzer will not go into an alarm set mode if an audible alarm is on for that alarm channel. It will for the other channel(s) that are not in an alarm mode. If, however, you push the alarm button twice for a channel that is in an alarm condition, it will allow you to change that alarm set point. If you set the alarm to a value that causes an alarm condition, the audible alarm will immediately come on upon exiting the alarm set mode.

**Note:** Under Auto-Clear operation, the silenced audible alarm may automatically come back on if the O<sub>2</sub> reading should go out of alarm range and then back into alarm condition. Also, after silencing the audible alarm, all alarms must be cleared to re-enable the audible alarm.

#### 5.2.4.2 Manual Clear Operation

When SW6 switch #6 is in the "OFF" position, the Series 3000 Trace Oxygen Analyzer is in the Manual Clear mode. In the manual clear mode, whenever the Series 3000 Trace Oxygen Analyzer senses an

alarm condition, it will be indicated by the 3 indications listed in Section 5.2.4. However, if the oxygen level should return to a non-alarm level, the monitor **will not** automatically clear. The user must first cancel the audible alarm by pushing the appropriate alarm button. Only after the audible alarm has been canceled can the user clear the alarm condition by again pushing the appropriate alarm button. If the set-point is to remain the same, simply pushing the appropriate alarm button a third time will clear the alarm.

**Note:** If the audible alarm is activated, pressing any alarm button that is not associated with an alarm condition, will temporarily quiet the audible alarm. Upon exiting the alarm set condition or if the monitor times out because of no user input, the audible alarm will resume awaiting a manual clear operation as described above.

#### 5.2.4.3 Timing Out

If the user is setting the alarm(s) in the Series 3000 Trace Oxygen Analyzer and no adjustment has been made for approximately 2 minutes, the analyzer will automatically revert back to normal operation. This feature helps to prevent the user from inadvertently keeping the analyzer off-line for a prolonged period of time. If the user is in an alarm setting sequence and the instrument times out, the alarm value will be that which was last displayed in the LCD. However, under the calibration mode, if the instrument times out, no changes to the calibration settings will take place.

#### 5.2.5 Over Range

If the oxygen concentration of the gas being measured by the Series 3000 Trace Oxygen Analyzer exceeds the highest range of the instrument, the LCD will show "OL" signifying an overload condition and the audible alarm will sound. The alarm can be shutoff at any time using any of the front panel switches. If left on, it will automatically shutoff once the oxygen concentration has dropped within range of the analyzer.

#### 5.2.6 TTL Signals for Analyzers with Autoranging

As is the case with single range analyzers, all three range analyzers are equipped with two full scale analog outputs, 4-20 mADC and 0-2 VDC. If a recorder, datalogger, PLC, etc. Will be used to monitor the analog output (s) of the Series 3000 Trace Oxygen Analyzer, TTL (transistor transistor logic) signals are available to indicate (to the interface device) which of the three oxygen ranges is in use.

For example, a Series 3000 Trace Oxygen Analyzer equipped with three oxygen ranges of 0-50/500/5000 ppm, will provide simultaneous analog outputs of 12 mADC and 1 VDC when the oxygen value is 25 ppm, 250 ppm or 2500 ppm. Without use of the TTL signals, the interface device cannot distinguish which range is in use. RNG1 represents the lowest of the three ranges, with RNG2 and RNG3 representing the middle and high range respectively. The signals are accessible via three terminals labeled (RNG1, RNG2 and RNG3) near the top of the main output connector of the Series 3000 Trace Oxygen Analyzer (see figure 1.0). A **high** TTL signal indicates the specific range in use. When the lowest range is in use, RNG1 will be high (>2.8 VDC), and RNG2 and RNG3 will be low (<0.8 VDC). When the middle range is in use, RNG2 will be high with RNG1 and RNG3 indicating low, and when the high range is in use, RNG3 will be high with RNG1 and RNG2 indicating low.

##### 5.2.6.1 Manual Range Changing

The Series 3000 Trace Oxygen Analyzer can be configured to change the measuring ranges manually. Pressing Alarm 1 & Alarm 3 keys simultaneously enables the analyzer to briefly display the existing range setting. The default setting from the factory is [Auto]. This is a toggling function, therefore to cycle the available ranges, simply continue to press the Alarm 1 and Alarm 3 keys simultaneously until the range

desired is shown in the display. As an example, if a Series 3000 Trace Oxygen Analyzer is equipped with three ranges consisting of 0-1/10.0/100.0 ppm, pressing A1 and A3 simultaneously would produce a temporary range indication on the front panel.

Press A1 and A3 simultaneously	Display reads:	100.0	
Press A1 and A3 simultaneously	Display reads:	10.0	
Press A1 and A3 simultaneously	Display reads:	1.00	
Press A1 and A3 simultaneously	Display reads:	Auto	
Press A1 and A3 simultaneously	Display reads:	100.0	Cycle Repeats.

When operating in manual mode (any range other than **Auto**), the instrument will display an **OL** condition if the oxygen concentration in the sample gas has gone beyond the range it is on.

### 5.2.7 Gas System Pressure Limits

For sample gases and/or calibration gases that are under pressure, it is imperative that the input pressure to the sensor be kept to under **1 pound per square inch**. If the pressure is expected to be in excess of 1.0 psi, it is advisable to use a pressure regulator (Alpha Omega Instruments Model Number 3PRR). Flow rates to the analyzer should be between **0.5 to 1.0 liters per minute**, never to exceed 2.0 liters per minute. If the sample pressure is insufficient to move the gas through the sensor housing, a sample pump may be required (Alpha Omega Instruments P/N 3PMP or 3PMPH). If so, the suction side of the sample pump should be connected to the outlet side of the sensor housing. The pressure differential should never exceed 1 psi. This could occur if there was a shutoff valve upstream and it was placed in the off position with the pump on. If the pump has the capacity to create a pressure drop in excess of 1 psi across the sensor, damage could result.

### 5.2.8 Sample Connections

All Series 3000 Trace Oxygen Analyzers are equipped with 1/4 inch stainless steel compression fittings on both the sample inlet and outlet to the sensor housing. In addition, the necessary hardware for terminating to standard tubing is supplied. For all applications, stainless steel tubing is recommended. The Series 3000 Trace Oxygen Analyzer may be operated without any connections to the output of the sensor housing. Unless the sample gas is toxic or explosive in nature, it is common for the gas to be vented to atmosphere. Another precautionary measure should be taken if a high capacity pump is being used. In such cases, be sure to regulate the gas flow through the sensor using the downside isolation valve discussed in the following section.

**NOTE: ALL EXPLOSION PROOF ANALYZERS ARE EQUIPPED WITH INLET AND OUTLET GAS FLAME ARRESTORS. DO NOT REMOVE THESE ARRESTORS AS DOING SO MAY PRODUCE A POTENTIALLY HAZARDOUS CONDITION AND INVALIDATE THE INSTRUMENT WARRANTY.**

### 5.2.9 Isolation Valves

For applications where the Series 3000 Trace Oxygen Analyzer will be used on an intermittent basis rather than continuously on-line, it is important to use the isolation valves that have been installed on the instrument. The valves will protect the sensor from exposure to air during times when the instrument is not in use. Just prior to taking the instrument off line, it is advisable to shut off the gas flow to the instrument, shutting the inlet valve off first followed immediately by the outlet valve (shutting the inlet valve first avoids inadvertently over pressurizing the sensor). Assuming the gas that was flowing through the sensor housing contained trace levels of oxygen, this will help minimize exposing the sensor to air. When reconnecting the instrument to a sample gas line, just prior to starting the sample flow, open the outlet valve followed by the inlet valve.

## SECTION 6.0 CALIBRATION PROCEDURES

### 6.1 Initial & Routine Calibration Checks

All Series 3000 Oxygen Trace Oxygen Analyzers are fully calibrated at the factory prior to shipment. However, with the potential hazards associated with shipping instrumentation, it is advisable that the analyzer be given a system calibration check at the time of startup. Alpha Omega Instruments trace oxygen sensors features high accuracy and excellent long term stability characteristics. As a result, routine maintenance is kept to a minimum. As is the case with all gas analyzers, it is advisable to periodically check the overall system calibration. The frequency of these checks is often determined by in-house calibration protocols. If none exists, Alpha Omega Instruments Corp. recommends that a calibration check be made on an average of once every 2-3 months.

#### 6.1.2 Calibration Gas

The oxygen sensor used in the Series 3000 Trace Oxygen Analyzer has a linear output. As a result, it can be calibrated using a single calibration gas as long as the test is performed accurately. The calibration gas should contain a defined concentration of oxygen with a balance of nitrogen ( $N_2$ ). The actual concentration of oxygen should be chosen based on the range(s) of the instrument. For single range analyzers, choose a calibration gas that is somewhere between 30%-70% of the analyzer's range. For instance, if the analyzer has a range of 0-1,000 ppm, it is advised that the calibration gas should have an oxygen concentration between 300-700 ppm/balance  $N_2$ . For three range analyzers, use the same rule of thumb choosing the range most often used as the basis for selecting the calibration gas. As an example, if the analyzer has three ranges consisting of 0-10/100/1,000 ppm and the 0-100 ppm is the most often used range, the calibration gas selected should have an oxygen concentration between 30-70 ppm/balance  $N_2$ . Most major gas manufacturers can readily supply calibration gases.

#### 6.1.3 Procedure for Checking Calibration

1. Select a cylinder of calibration gas as described in Section 6.1.2.
2. When selecting a pressure regulator to use with the cylinder gas, it is advisable to use a two-stage regulator with the second stage capable of delivering a gas sample at a pressure of under 10 psig. Also, be sure to choose a regulator with a metal diaphragm, preferably stainless steel.
3. In addition to the selection of the pressure regulator, care must be given to choose the correct sample tubing materials. For trace oxygen measuring applications, stainless steel tubing should be used. An alternate choice is copper.

10 ppm  $O_2$  in  
 $N_2$



**DO NOT USE RUBBER OR PLASTIC TUBING. AIR CONTAINS 209,000 PPM OF OXYGEN. A MINUTE LEAK OF AIR INTO THE EITHER THE CALIBRATION GAS OR SAMPLE GAS LINE CAN CAUSE SIZABLE ERRORS IN READINGS. LEAKAGE CAN BE THROUGH CRACKS IN THE TUBING OR BY DIFFUSION THROUGH THE TUBING.**

4. If not already equipped with one, install a flowmeter on the discharge side of the sensor. Being on the downside of the sensor, the materials of construction are of no significance to the readings obtained so acrylic flowmeters are permissible.



5. Power up the Series 3000 Trace Oxygen Analyzer as described in Section 4.2. and set the calibration gas flow rate to 1.0 liter per minute (LPM). Monitor the analyzer response to the calibration gas, waiting until a stable reading has been established. (The use of a recorder or data logger can be very helpful in verifying that the analyzer has reached an equilibrium point.)
6. Once the reading has stabilized, check the system for gas leaks. This is best done when step 5 has been completed. An easy method of determining the leak integrity of the system is to vary the flow rate of the calibration gas. If increasing the flow rate from 1 LPM to 2 LPM causes a drop in the reading, there is a good chance that somewhere between the gas source and inlet to the sensor there is a leak. Check all gas fittings, connections, etc. using Snoop liquid leak detector (Snoop is a registered trademark of NUPRO Co., 4800 East 345th Street, Willoughby, Ohio 44094).
7. The reading in the LCD should now display the oxygen concentration of the calibration gas. **BE SURE TO ALLOW THE READING TO COME INTO EQUILIBRIUM BEFORE MAKING ANY ADJUSTMENTS.**
8. If the oxygen value read from the LCD differs from the calibration gas, a span adjustment should be made so that the value displayed in the LCD is identical to that of the calibration gas. If a span adjustment is to be made, the instrument must be placed in the calibration mode. To do so, **simultaneously** press the front panel buttons labeled Alarm 1, Alarm 2, and Alarm 3. The meter will alternately blink between "CAL" and the oxygen value in the LCD to let the user know that the analyzer is in the calibration mode. If the oxygen value displayed is lower than the calibration gas value, press the up arrow to adjust the value in the LCD upwards. Conversely, if it is higher, use the down arrow to lower the reading. When finished, once again press Alarm 1, Alarm 2, and Alarm 3 buttons **simultaneously** and the display will stop blinking, indicating the calibration sequence has been completed. If after initiating a calibration sequence, it is decided not to make an adjustment, allow the instrument to time out (2 minutes). In doing so, the previous calibration settings will be used.



The Series 3000 Trace Oxygen Analyzer is equipped with a fourth alarm relay, referred to as an Instrument Status Alarm. The primary function of this relay is to alert users when a sensor needs to be changed. During calibration, if the amount of gain (calibration adjustment) has exceeded a predetermined limit set at the factory, a message will be shown across the LCD "change sensor". This message will be displayed only when the instrument has been taken out of calibration mode. In addition to the message, the instrument status alarm will actuate. If this is the first warning, in all likelihood, the instrument will still function normally. However, it is an indication that the sensor should be replaced as soon as possible. Though the change sensor message will only be displayed once per calibration cycle (when the preset gain has been exceeded), the alarm relay will stay in the alarm state until the condition has been cleared. Clearing of the alarm condition requires changing the sensor.

#### **6.1.3.2 Zero Adjustment**

As discussed in Section 3.0, Alpha Omega Instruments' trace oxygen sensor is very specific for oxygen. When there is no oxygen present, the output from the sensor is zero. This coupled with the inherent linear characteristics of the sensor allow the user to use a single point calibration as means of calibrating the system. NO ZERO CALIBRATION IS REQUIRED.

## SECTION 7.0 REPLACEMENT OF THE OXYGEN SENSOR

### 7.1 Procedure for Replacing the Oxygen Sensor

Alpha Omega Instruments oxygen sensor is designed to operate for prolonged periods of time without replacement. However, in time the sensor's output will drop to a level where replacement becomes the prudent course of action. A good indication of this is a marked increase in calibration frequency. When this happens, a replacement sensor should be ordered directly from the factory.

To install a new sensor follow the directions below (applies to all non-explosion proof systems):

1. Remove all power (AC or DC) from the instrument.
2. Locate the sensor housing. For portable and certain panel mounted configurations, the sensor housing is located on the rear of the instrument. For remote sensor enclosures, the sensor housing is mounted to the remote enclosure, and for explosion proof systems, the sensor housing is mounted within the explosion proof enclosure.
3. If the enclosure to which the sensor housing is attached is permanently mounted and, the gas lines are rigidly installed, it will be necessary to disconnect both gas inlet and outlet lines.
4. With one hand supporting the sensor housing, loosen (do not remove) the four servo clamp screws that hold the stainless steel ring to the enclosure. The sensor housing will drop from the enclosure.
5. Disconnect the modular connector at the top of the sensor housing.
6. Remove the three socket head screws (9/64") that hold the two halves of the sensor housing together. Once these screws have been removed, the two halves should easily separate.



**WHEN SEPARATING THE TOP HALF OF THE SENSOR HOUSING FROM THE BOTTOM HALF, NEVER TWIST THE TWO AS THIS WILL CAUSE DAMAGE TO THE SPRING LOADED PINS. BE CAREFUL NOT TO BEND THESE PINS WHEN THE SENSOR HALVES ARE APART.**

7. Remove the old sensor from the bottom half of the sensor housing.



**THE SENSORS CONTAIN A SMALL AMOUNT OF CAUSTIC ELECTROLYTE. WHEN DISCARDING SPENT SENSORS, CARE SHOULD BE GIVEN NOT TO PUNCTURE THE SENSOR OR TAKE IT APART. DISCARD THE SENSOR ACCORDING TO LOCAL STATE OR COUNTY GUIDELINES.**

8. Remove the existing O ring and examine the grooves in the upper and lower halves of the sensor housing to be sure they are clean. Replace the O ring with the new one supplied with the sensor.

9. Remove the new sensor from its package. Before installing it in the lower half of the sensor housing, REMOVE THE SHORTING STRIP BETWEEN THE 2 CONCENTRIC GOLD RINGS and then install the sensor with the two gold rings facing up.
10. Take the two halves of the sensor housing and align them so the socket head screws can be reinstalled. Hand tighten the socket head screws being careful to do so evenly.
11. Reconnect the gas lines and begin processing gas through the sensor housing.
12. Apply power and calibrate according to Section 6.1.3.



WHEN A NEW SENSOR IS INSTALLED, IT MAY TAKE 1-2 HOURS OR LONGER TO REACH EQUILIBRIUM ON A CALIBRATION GAS. THE AMOUNT IT TAKES TO REACH EQUILIBRIUM IS A FUNCTION OF HOW LONG THE SENSOR WAS EXPOSED TO AIR DURING REPLACEMENT. THEREFORE, IT IS IMPORTANT THAT WHEN A NEW SENSOR IS INSTALLED, THE TIME BETWEEN WHEN IT WAS UNPACKAGED AND FIRST EXPOSED TO CALIBRATION GAS SHOULD BE KEPT TO AN ABSOLUTE MINIMUM.

## SECTION 8.0

### Optional Serial Communications RS232C & RS485

#### 8.1 Baud Rates

Available Baud Rates are 38400, 19200, 9600, 4800, 2400, 1200, 600, 300, and 150. To set the baud rate please follow the directions below, in the sequence given:

- ♦ Be sure that the unit is fully operational. You can check this by observing that valid oxygen readings are displayed on the front panel LCD of the instrument.
- ♦ Next, make sure that switch 5 on the Main board Switch Bank is LOW or OFF. This is a factory switch and should be on only in certain circumstances. Note: if the unit was shipped with SW5 ON, turn it off to set the baud rate. After the baud rate has been set, move SW5 to the on position to resume normal operation.
- ♦ Press and hold the UP and DN keys simultaneously. An initial beep will be heard followed by a second beep which confirms that the next step should be taken.
- ♦ At this point, the current setting should be displayed on the front panel. If not, make sure that you hold the two aforementioned keys long enough.
- ♦ Now press and hold the UP and DN keys to scroll through available settings choosing the desired baud rate.

With the desired baud rate displayed, push the Alarm 3 button to save it in battery backed memory

#### 8.2 Standard Commands

The following standard commands apply for both the RS-232C OR RS-485 interfaces:

Please note that all letters typed can be upper or lower case. The only exception to this rule is the optional [string]. The Commands below are in upper case for clarity purposes only. Also any user input not in brackets is shown in lower case. Optional commands or strings are shown within brackets.

<u>Command</u>		<u>Description</u>
Aa=[bb.b][L/H]	<Enter>	Alarm set
Bcccc	<Enter>	Baud rate select
C[bb.b]	<Enter>	Calibrate
D[string]	<Enter>	Disable Security
E[string]	<Enter>	Enable Security
FSd=[ON/OFF/1/0]	<Enter>	Fail-safe select
H	<Enter>	Help Screen
M	<Enter>	Manual clear toggle
O	<Enter>	Oxygen Concentration
Q	<Enter>	Quiet mode (no beeps at all)
S	<Enter>	Signal mode (beeps audible)
V	<Enter>	View current Alarms and settings

Where: a = 1, 2, or 3 for different alarms

bb.b = Decimal number signifying the oxygen in PPM

L/H = Optionally set to 'L'ow or 'H'igh alarm

cccc = Baud rate number from 150 to 38400

d = Number designating Relay 1 to 4

ON/OFF/1/0 = 'ON' is the same as '1' etc.

name = String for accessing multiple units (see manual)

string = String for security protection (see manual)

An example of each command is as follows:

**'A' Command** - Alarm set point with low or high alarm option.

Alarm #1 will be set to go off in the case of the oxygen level dropping below 20 ppm. Type:

```
A1=20.0L <Enter>
```

To change Alarm #1 to 18 ppm instead of 20 ppm you could type:

```
A1=18 <Enter>
```

Note how the 'L'ow alarm is optional unless changing to 'H'igh? As you can see, the decimal point is optional too, and if left out defaults to '.0'. Note how the command in the help screen says, "[bb.b]&/or[L/H]"? Examine the following example:

```
A1=H <Enter>
```

This is a valid command and will only effect the 'L'ow or 'H'igh status of Alarm 1. To set it back to a low alarm type:

```
A1=L <Enter>
```

**'B' Command** - Baud change. To change the baud from 300 bps (default) to 9600 bps type the following:  
Make sure the instrument is responding at 300 bps first.

```
B9600 <Enter>
```

Note that you may have some garbled data output. Now you must change your terminal's baud rate and reestablish communication by pressing <Enter>.

**'C' Command** - Calibrate to known calibration standard (i.e. 40 ppm).  
Using a calibration gas consisting of 40 ppm, type the following:

```
C40 <Enter>
```

**'D' Command** - Disable security with optional pass code. (See 'E' Command below for description of security)

In it's simplest form, to disable security protection type:

D <Enter>

Assuming an 'E' Command had been sent with a pass code of "mypass1" (see next command example) then type the following to disable the security option:

Dmypass1 <Enter>

Note: typing "DMYPASS1" will not disable the instrument if the original pass code was in lowercase! That means that the 'D' and 'E' commands are CASE SENSITIVE.

**'E' Command** - Enable security with optional pass code.

To keep others from changing any system settings, the 'E'nable Command is supplied as an optional security measure. In it's simplest form type the following:

E <Enter>

In this example, the user would just type 'E' by itself. This would keep people from inadvertently changing the system settings. However, if the need should arise to change a setting, all that would be necessary would be a 'D' command with no pass code. The following command shows the use of a pass code:

Emypass1 <Enter>

This will arm the security system and will ignore any requests for system changes until the user disarms the system with a 'D' Command followed by the correct pass code (See 'D' command above).

**'FS' Command** - Fail-safe select.

If the alarm relays should be energized in normal operation and release in the case of a power failure, type the following:

FS1=ON       <Enter>  
FS2=1        <Enter>  
FS3=on       <Enter>  
fs4=On       <Enter>

Note the individual control over each alarm. Also, ON/on/OFF/off or 1/0 can be used to control the status of each. Commands are not case sensitive. Example: If only Alarm 2 needs to be in Fail-safe mode, then type:

FS1=off      <Enter>  
FS3=0        <Enter>  
FS4=Off      <Enter>

This turns off the Fail-safe mode for Alarms 1, 3, and 4.

**'H' Command - Help Screen**  
Displays a help screen.

H <Enter>

**'M' Command - Manually clear all alarms.**

This command toggles between 'M'annual and Automatic clearing of alarms. The clearing of an alarm is simply when the condition causing the alarm has been corrected and the Series 3000 gives no indication that the alarm was on.

**'O' Command - Output Oxygen Concentration**

This command is useful for a quick reading of the Oxygen Concentration. All that is returned is the present reading in trace oxygen.

**'Q' Command - Quiet mode (disables the audible alarm. **Warning!** This disables all sounds - even from alarms!)**

If the instrument is going to be in a test mode for a while, with sensors being removed and replaced (causing a lot of harmless alarms), you can optionally remove the beeping altogether by typing:

Q <Enter>

This will stay in effect until an 'S' command is received by the Series 3000, or a re-boot is initiated. A message will appear under the 'V' command displaying the current mode.

**'S' Command - Signal mode (enables the audible alarm).**

To allow the audible alarms to be heard, simply type the following:

S <Enter>

**'V' Command - View current alarms and settings**

To view the current status of the Series 3000, type:

V <Enter>

Typical Response:

Alarm Settings

#1: (HI) 22.0	Fail-safe: OFF
#2: (LO) 19.0	Fail-safe: OFF
#3: (LO) 10.0	Fail-safe: ON
#4: N/A	Fail-safe: OFF

Oxygen Level = 21.0 ppm

Alarm 1 is ON	Relay 1: Energized
Alarm 2 is OFF	Relay 2: De-energized
Alarm 3 is OFF	Relay 3: Energized



### Conditions

AC inp: ok                      4-20mA: ok                      Open Collector output: off  
Batt: ok (22)                      Aux. Relay: De-energized  
Alarms to be cleared MANUALLY  
Signal Mode

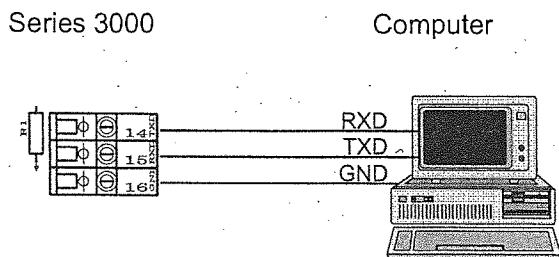
Commands that affect the output of the 'V' command are as follows:

1. 'A' commands will update the Alarm Settings
2. 'FS' commands will update the Fail-safe settings on or off
3. 'Q' & 'S' commands will update the comment indicating the status of the 'Q'uiet / 'S'ignal mode
4. 'M' commands will toggle the word following the phrase, "Alarms to be cleared ", between 'manually' and 'automatically'.

Note: The number in parenthesis next to the Battery condition is simply the voltage detected by the battery circuit. This can be used for making sure the battery is fully charged.

### 8.3 RS232/485 Connections

Connect the Series 3000 to a terminal or computer as follows:



Note: If you have an RS485 output and have trouble communicating, try tipping over the input and output lines. Some are called T+ / T- or maybe A / B. Whatever the case, the communications link will not work unless these are correct.

## SECTION 9.0

### Optional RS485 - Enhanced Remote Control Commands

#### 9.1 General

Please read the section on RS232C first to familiarize yourself to the command structure. All commands under RS485 are either exactly the same or have slight enhancements over RS232C. This section is devoted to specifying only the enhancements associated with the RS485 protocol. Below is a sample 'H'elp Screen using the 'H' Command.

\Aa=bb.b [L/H]	<Enter>	Alarm set
\Bcccc	<Enter>	Baud rate select
\C[bb.b]	<Enter>	Calibrate
\D[string]	<Enter>	Disable Security
\E[string]	<Enter>	Enable Security
\FSd= [ON/OFF/1/0]	<Enter>	Fail-safe select
\Gcommand	<Enter>	Global set (be careful here)
\H	<Enter>	Help Screen
\L[name]	<Enter>	Local Name OR Number
\M[name]	<Enter>	Manual clear toggle
\O[name]	<Enter>	Oxygen Concentration
\Q[name]	<Enter>	Quiet mode (no beeps at all)
\S[name]	<Enter>	Signal mode (beeps audible)
\U[name]	<Enter>	Use analyzer with 'name' for all cmds
\V[name]	<Enter>	View current Alarms and settings

Where:

- a = 1, 2, or 3 for different alarms
- bb.b = Decimal number specifying oxygen in ppm
- L/H = Optionally set to 'L'ow or 'H'igh alarm
- cccc = Baud rate number from 150 to 9600
- d = Number designating Relay 1 to 4
- ON/OFF/1/0 = 'ON' is the same as '1' etc.
- name = String for accessing multiple units (see manual)
- string = String for security protection (see manual)
- command = Any valid command (WARNING: G will act on all units!)

Please note that there is an extra character - a backslash ("\") - before each command. This is necessary to avoid conflicts between individual Series 3000's.

You will notice that there are three new commands here. 'G'lobal, 'L'ocal, and 'U'se. The first one is the 'G' Command. As it states above, this is the 'G'lobal Set command. This command is very powerful and must be discussed in detail.

RS485 gives the user the ability to connect multiple Series 3000's together and communicate to them simultaneously. Therefore, it may become necessary or convenient to have certain Setpoints be 'G'lobally set. Instead of setting all instruments up one by one, use the 'G'lobal Command to control all Series 3000 units at the same time!

Each command will be discussed here, taking into consideration that there is most likely more than one unit to be controlled over the RS485 communications lines (twisted pair).

Please refer to Section 8.2 for information on the following commands.

'A' Command - Same as RS232 without the backslash.  
'B' Command - Same as RS232 without the backslash.  
'C' Command - Same as RS232 without the backslash.  
'D' Command - Same as RS232 without the backslash.  
'E' Command - Same as RS232 without the backslash.  
'F' Command - Same as RS232 without the backslash.  
'H' Command - Same as RS232 without the backslash.

## 9.2 Special Commands for RS485

**'G' Command** - Global Set command.

This command will cause all units tied into the RS485 communications line to respond to whatever command comes after it. For example, typing:

```
\G <Enter>
```

will do nothing! This is because no command was given after the 'G'. However, typing:

```
\GA1=20.5h <Enter>
```

will set up every Series 3000 connected to the RS485 line to have a High Alarm1 Setting of 20.5 ppm. Now let's try the 'G' command with the 'B' command for setting the baud rate. This is a handy little time saver! For instance, to set all units to 9600 bps just type:

```
\GB9600
```

Or in other words, "Global Baud 9600". Make sure you change your terminal baud rate after using a 'B' command.

Globally Calibrating is not allowed.

The next two commands function just like RS232C, only they function on all units connected to the communications line.

```
\GD[string] and  
\GE[string]
```

"Globally Disable" and "Globally Enable". Refer to RS232C section for more detail.

Note: Remember, if you are adding units to the RS485 line, and you don't make sure of your security codes, you could end up with multiple security codes! To be sure, have all units on line before enabling a global security code.

If you need all instruments to operate in the Fail-safe mode, just use the 'G'lobal command:

```
\GFS1=1 <Enter>  
\GFS2=1 <Enter>  
\GFS3=1 <Enter>
```

\GFS4=1 <Enter>

Note how each Alarm is treated individually. The following commands are not available:

\GH <Enter> does nothing.  
\GI <Enter> does nothing.  
\GL <Enter> does nothing.

The next available 'G'lobal command would be the 'Q'uiet command. Note: No optional name is required and if supplied will cause the Series 3000 (if enabled) to respond with an 'Error!' message. (See description of 'Q' command below)

\GQ <Enter>

Preceding this command with the 'G'lobal command does exactly what you would expect. 'G'lobally 'Q'uiet all audible sounds. See the 'S'ignal command below for setting the audible sounds back to normal.

To make all alarms audible, type the following command:

\GS <Enter>

This puts all Series 3000's into 'S'ignal mode. This means that any alarm condition will result in an audible alarm signal. No other commands are available for 'G'lobal setting.

### 9.3 Added RS485 Enhanced Commands

**'L' Command** - Local name assignment.

This command allows the user to name each Series 3000 that might be on the RS485 communications line. For instance, an example might be that there are two rooms that need to be monitored using a Series 3000 in each room. From the factory, the Series 3000 is set up to have a blank 'name'. This is equivalent to typing:

\L <Enter>

If the unit has been enabled using the 'U' command or has been set up to the factory default, the instrument will respond:

'' O.K.

The unit's name is displayed in single quotation marks. Note how the name is blank above. In our example, we want to put two Series 3000's on line. First connect ONE Series 3000 to the RS485 line, and get it up and running. After the unit is responding, type the following just as an example:

\L Unit#1 <Enter>

This comes back with a message stating:

' ' changed to: ' Unit#1'

' Unit#1' O.K.

You can substitute the above, "Unit#1" with any string you like. Usually the shorter the better for purposes of saving keystrokes when accessing the unit. Now type the following:

\U <Enter>            See next command for description

This basically 'disables' Unit#1 so we can talk to the next unit we put on the line. Now we are ready to add another unit. Connect the second Series 3000 to the line. If you haven't already, you may have to type 'L' followed by <Enter> (Factory Default) to communicate with the new unit that was just put on the line. (Note: if the unit does not respond then a factory boot may be necessary. To perform a factory boot which will return the unit to it's shipping state, push the UP, DOWN, and Alarm 3 buttons simultaneously as above while holding at least one button down. The button(s) pushed will very briefly show on the display( i.e. while holding the Alarm 1 button down the display will read [ A1 ] briefly ) until [[Fb]] shows up on the display. This means you have successfully performed a Factory boot. The instrument will then proceed to a normal warm boot to read the switch settings etc. - At this time you can name the second unit. Maybe it would look something like this:

\L Unit#2 <Enter>

**WARNING! If you put two or more units on an RS485 line with the same name and ask for output, anything can happen! You can change the currently responding unit's name, just don't set it to a name that currently exists because the next time you type "Uname", you will select two units at one time!**

**\U' Command** - Use command.

This command is used for selecting a different Series 3000 that has already been set up using the 'L' command. For instance, using the above example of Unit #1 and Unit #2, to access Unit #1 you would type:

\U Unit#1

You should get a response of:

Using: ' Unit#1'

Note the 'extra' space after the single quote at the beginning of the string. This is not mandatory and can be removed by renaming it using the 'L' command as follows:

\LUnit#1 <Enter>

Note: no space between 'L' and 'U'

#### 9.4 RS485 Enhanced Commands

**'M' Command** - Manual / Automatic clearing of alarms.

The enhancement to this command is using the 'name' as a variable. For instance, no matter what unit is enabled and responding to commands, you can address a specific unit for toggling this function as follows:

```
\M#1 <Enter>
```

If a unit with the 'name' "#1" assigned to it exists, then only that unit will act upon the command. Note: Only the unit that is enabled can respond via RS485, so when using this addressing scheme you may want to verify that the command was received by the specific instrument by giving it a 'V' name command (See below).

**'O' Command** - Output Oxygen Concentration

This command is useful for a quick reading of the Oxygen Concentration. All that is returned is the present reading in trace oxygen.

**'Q' Command** - Quiet Mode select

Same enhancement as above in that you can selectively 'Q'uiet any unit by following the command with a valid unit name.

**'S' Command** - Signal Mode select

Same enhancement as above.

**'V' Command** - View settings

This has the same enhancement as the 'M', 'Q', and 'S' commands and can be used to verify that each of those commands work properly. For example: With two units, one named "One" and the other named "Two" you could do the following:

```
\UOne <Enter>
```

This selects unit "One". Now lets check the status of unit "Two":

```
\VTwo <Enter>
```

We will just notice that part of the 'V'iew screen shows:

```
Alarms to be cleared MANUALLY
```

Now try changing the MANUAL clearing to AUTOMATIC without 'U'sing unit #2:

```
\MTwo <Enter>
```

```
\VTwo <Enter>
```

Now we can see that the 'V'iew screen shows:

```
Alarms to be cleared AUTOMATICALLY
```

Note that while we entered these commands the unit would respond to an <Enter> with:

'One' O.K.

That means you could set up all your parameters for unit "One" and still use the 'M', 'Q', and 'S' commands on other units without having to type "UTwo", then the desired command.

Note: It is possible to reconfigure the alarms temporarily via the front panel. This will only last as long as the power is on and no warm boot is performed. To save your front panel configuration, you MUST have Switch #8 in the "ON" position. This will cause the Series 3000 Trace Oxygen Analyzer to remember all user modified configurations.

Technical drawing of the Alpha-Omega Series 3000 Trace Oxygen Analyzer, showing three views: front, side, and top.

**Front View:** The unit is rectangular with a carrying handle. It features a digital display showing "15.4" and the text "PPM OXYGEN". Below the display are three buttons labeled "ALARM 1", "ALARM 2", and "ALARM 3". Below the buttons is a "SENSOR HOUSING" and an "OPTIONAL VALVE". The unit is labeled "SERIES 3000 TRACE OXYGEN ANALYZER" and "ALPHA OMEGA INSTRUMENTS".

**Side View:** Shows the unit's profile with dimensions 6.2 and 3.6.

**Top View:** Shows the unit's top with dimensions 6.5 and 1.8.

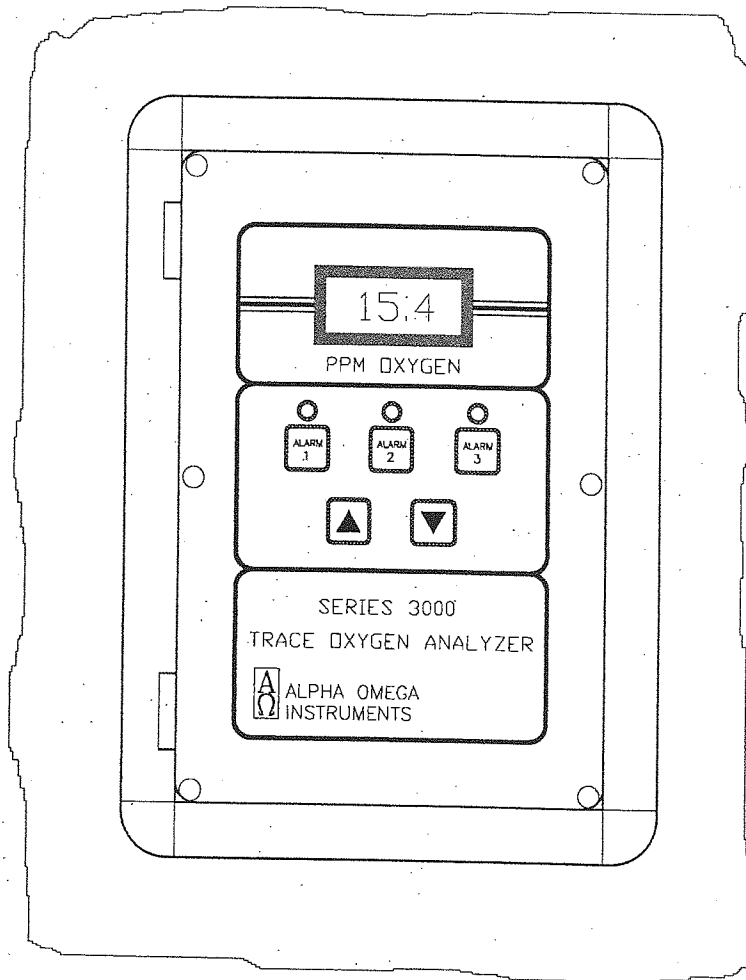
**Table:**

CONFIGURATION		SERIES 3000		CONFIGURATION DRAWING	
ITEM	DESCRIPTION	ITEM	DESCRIPTION	ITEM	DESCRIPTION
1	ANALYZER	2	SENSOR HOUSING	3	OPTIONAL VALVE
4	ALARM 1	5	ALARM 2	6	ALARM 3
7	ALARM 4	8	ALARM 5	9	ALARM 6
10	ALARM 7	11	ALARM 8	12	ALARM 9
13	ALARM 10	14	ALARM 11	15	ALARM 12
16	ALARM 13	17	ALARM 14	18	ALARM 15
19	ALARM 16	20	ALARM 17	21	ALARM 18
22	ALARM 19	23	ALARM 20	24	ALARM 21
25	ALARM 22	26	ALARM 23	27	ALARM 24
28	ALARM 25	29	ALARM 26	30	ALARM 27
31	ALARM 28	32	ALARM 29	33	ALARM 30
34	ALARM 31	35	ALARM 32	36	ALARM 33
37	ALARM 34	38	ALARM 35	39	ALARM 36
40	ALARM 37	41	ALARM 38	42	ALARM 39
43	ALARM 40	44	ALARM 41	45	ALARM 42
46	ALARM 43	47	ALARM 44	48	ALARM 45
49	ALARM 46	50	ALARM 47	51	ALARM 48
52	ALARM 49	53	ALARM 50	54	ALARM 51
55	ALARM 52	56	ALARM 53	57	ALARM 54
58	ALARM 55	59	ALARM 56	60	ALARM 57
61	ALARM 58	62	ALARM 59	63	ALARM 60
64	ALARM 61	65	ALARM 62	66	ALARM 63
67	ALARM 64	68	ALARM 65	69	ALARM 66
70	ALARM 67	71	ALARM 68	72	ALARM 69
73	ALARM 70	74	ALARM 71	75	ALARM 72
76	ALARM 73	77	ALARM 74	78	ALARM 75
79	ALARM 76	80	ALARM 77	81	ALARM 78
82	ALARM 79	83	ALARM 80	84	ALARM 81
85	ALARM 82	86	ALARM 83	87	ALARM 84
88	ALARM 85	89	ALARM 86	90	ALARM 87
91	ALARM 88	92	ALARM 89	93	ALARM 90
94	ALARM 91	95	ALARM 92	96	ALARM 93
97	ALARM 94	98	ALARM 95	99	ALARM 96
100	ALARM 97	101	ALARM 98	102	ALARM 99
103	ALARM 100	104	ALARM 101	105	ALARM 102
106	ALARM 103	107	ALARM 104	108	ALARM 105
109	ALARM 106	110	ALARM 107	111	ALARM 108
112	ALARM 109	113	ALARM 110	114	ALARM 111
115	ALARM 112	116	ALARM 113	117	ALARM 114
118	ALARM 115	119	ALARM 116	120	ALARM 117
121	ALARM 118	122	ALARM 119	123	ALARM 120
124	ALARM 121	125	ALARM 122	126	ALARM 123
127	ALARM 124	128	ALARM 125	129	ALARM 126
130	ALARM 127	131	ALARM 128	132	ALARM 129
133	ALARM 130	134	ALARM 131	135	ALARM 132
136	ALARM 133	137	ALARM 134	138	ALARM 135
139	ALARM 136	140	ALARM 137	141	ALARM 138
142	ALARM 139	143	ALARM 140	144	ALARM 141
145	ALARM 142	146	ALARM 143	147	ALARM 144
148	ALARM 145	149	ALARM 146	150	ALARM 147
151	ALARM 148	152	ALARM 149	153	ALARM 150
154	ALARM 151	155	ALARM 152	156	ALARM 153
157	ALARM 154	158	ALARM 155	159	ALARM 156
160	ALARM 157	161	ALARM 158	162	ALARM 159
163	ALARM 160	164	ALARM 161	165	ALARM



APPENDIX B  
 PANEL MOUNT CONFIGURATION  
 PART NUMBERS PNL, PNR, & PTX

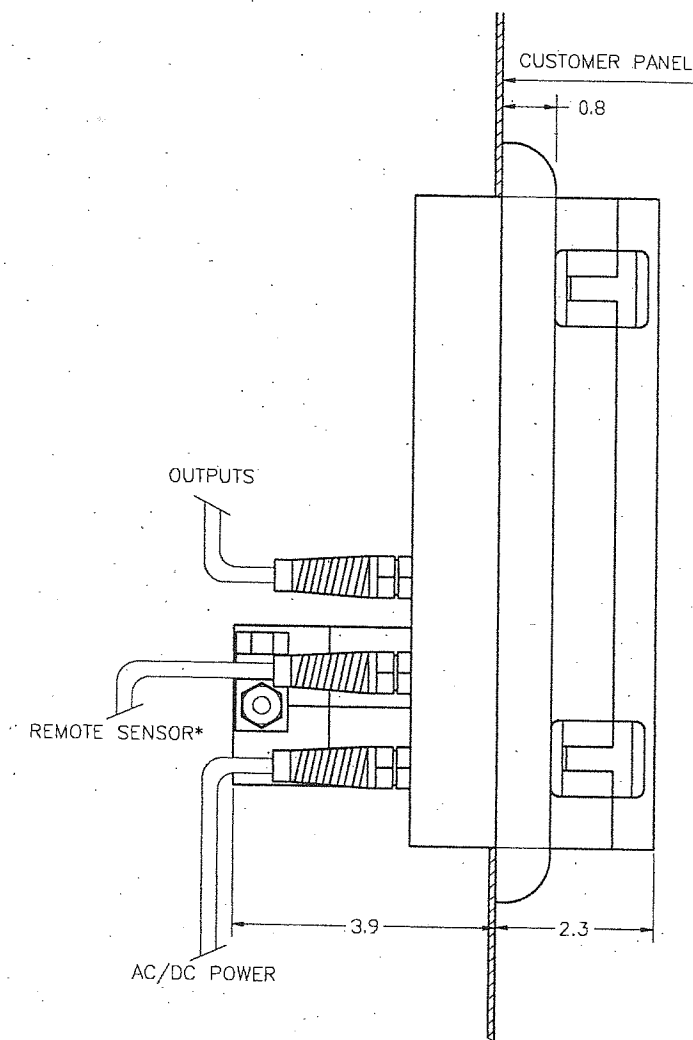
FRONT VIEW



UNLESS OTHERWISE SPECIFIED DIMENSIONS ARE IN INCHES		ALPHA-OMEGA INSTRUMENTS CORP.	
DECIMALS TOLERANCES ANGLES		30 Martin Street Cheshire, CT 07834	
.XX ± .010 XXX ± .005 DO NOT SCALE DRAWING		Tel. (860) 752-8877 (861) 333-8885 Fax. (203) 333-3950	
DRAWN	DATE	SERIES 3000 CONFIGURATION DRAWING	
CHECKED	DATE	SIZE	FEED No.
DESIGN	DATE	SCALE	DRAWING No.
		3000B	
		SHEET 1 OF 1	

APPENDIX B  
 PANEL MOUNT CONFIGURATION  
 PART NUMBERS PNL, PNR, & PTX

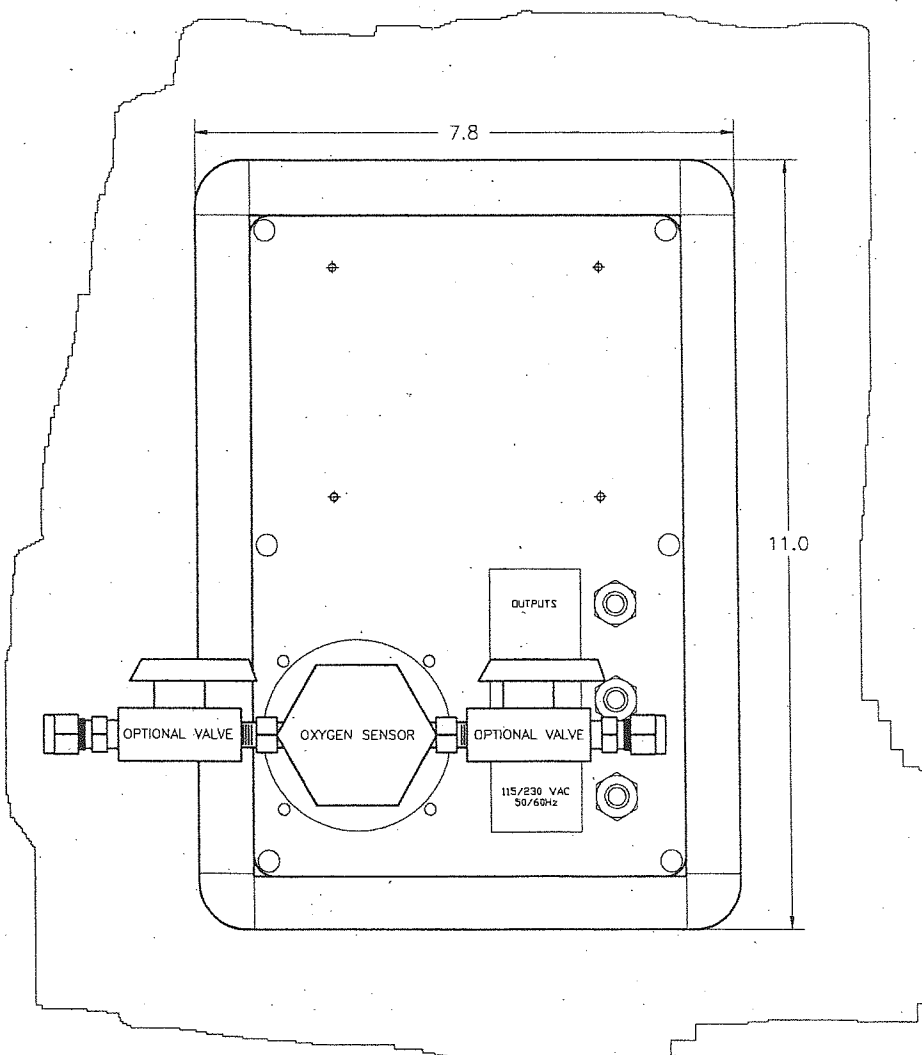
SIDE VIEW




UNLESS OTHERWISE SPECIFIED: DIMENSIONS ARE IN INCHES TOLERANCES		ALPHA-OMEGA INSTRUMENTS CORP. 30 North Street Concord, MA 03304		Tel: (603) 242-1877 Fax: (603) 242-1880	
DECIMAL ±.010	ANGULAR ±.25°	SERIES 3000 CONFIGURATION DRAWING			
DATE	DATE	SIZE	PROJ. No.	DRAWING No.	REV.
CHECKED	DATE	SCALE		3000C	A
DESIGN	DATE			SHEET 1 OF 1	

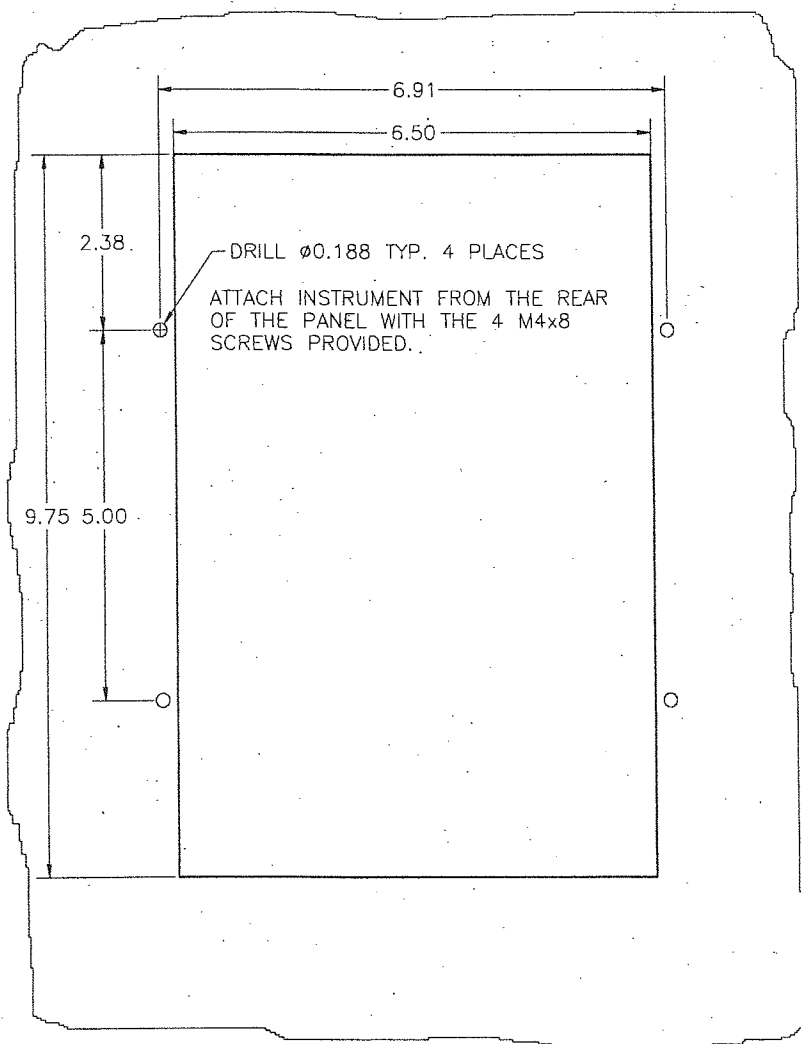
APPENDIX B  
 PANEL MOUNT CONFIGURATION  
 PART NUMBERS PNL, PNR, & PTX


REAR VIEW

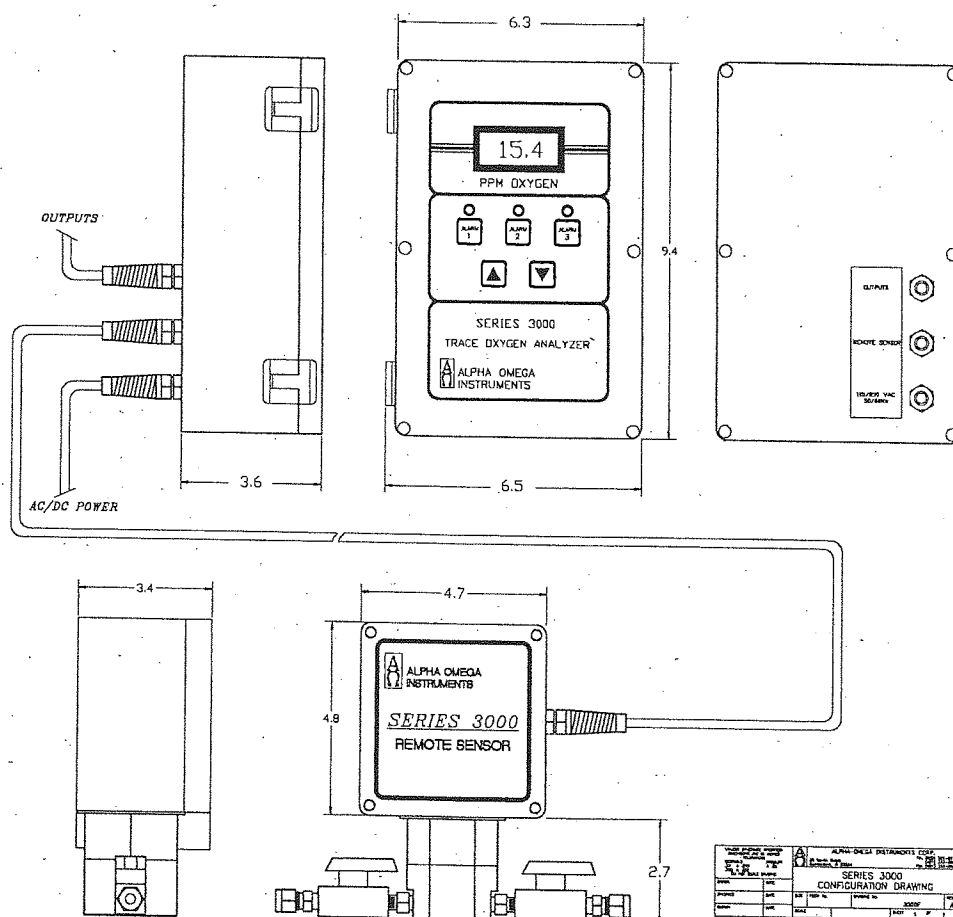


UNLESS OTHERWISE SPECIFIED DIMENSIONS ARE IN INCHES DECIMALS 30X & 32X 90° NOT SCALE DRAWING		 ALPHA-OMEGA INSTRUMENTS CORP. 30 North Street Canton, MA 01921 Tel: (617) 333-8477 Fax: (617) 333-8585	
SERIES 3000 CONFIGURATION DRAWING			
DESIGN	DATE	SIZE	REV. A
CHECKED	DATE	REV. A	REV. A
DESIGN	DATE	SCALE	1 OF 1

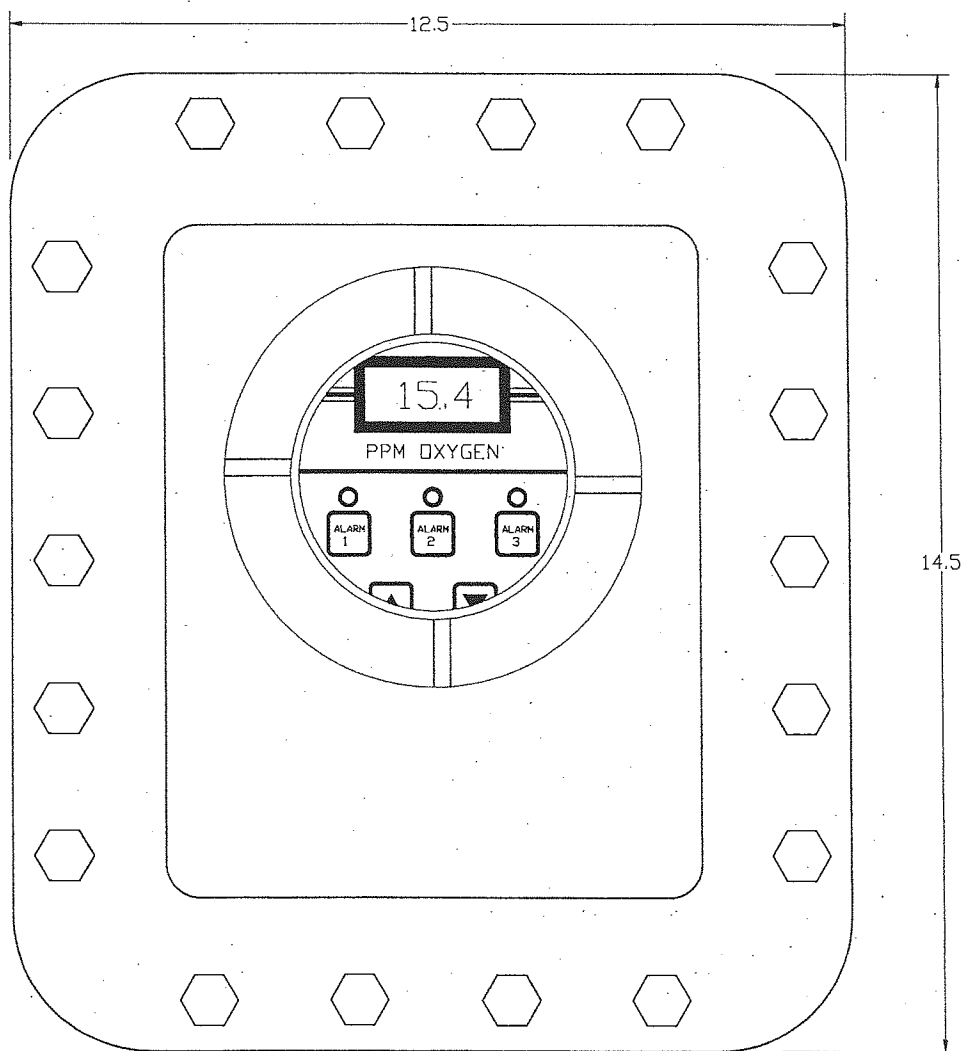
## PANEL CUT-OUT DETAILS



UNLESS OTHERWISE SPECIFIED DIMENSIONS ARE IN INCHES TOLERANCES DECIMALS      ANGULAR .XX ± .010      ° .01 .XXX ± .005      ° .05 DO NOT SCALE DRAWING		 ALPHA-OMEGA INSTRUMENTS CORP. 30 Varth Street Cumberland, RI 02846 Tel. (401) 382-2477 (401) 333-2586 Fax (401) 333-5555	
DESIGN      DATE		SERIES 3000 CONFIGURATION DRAWING	
CHECKED      DATE		SIZE      PSION No.      DRAWING No.      REV.	
DESIGN      DATE		SCALE      SHEET 1 OF 1	



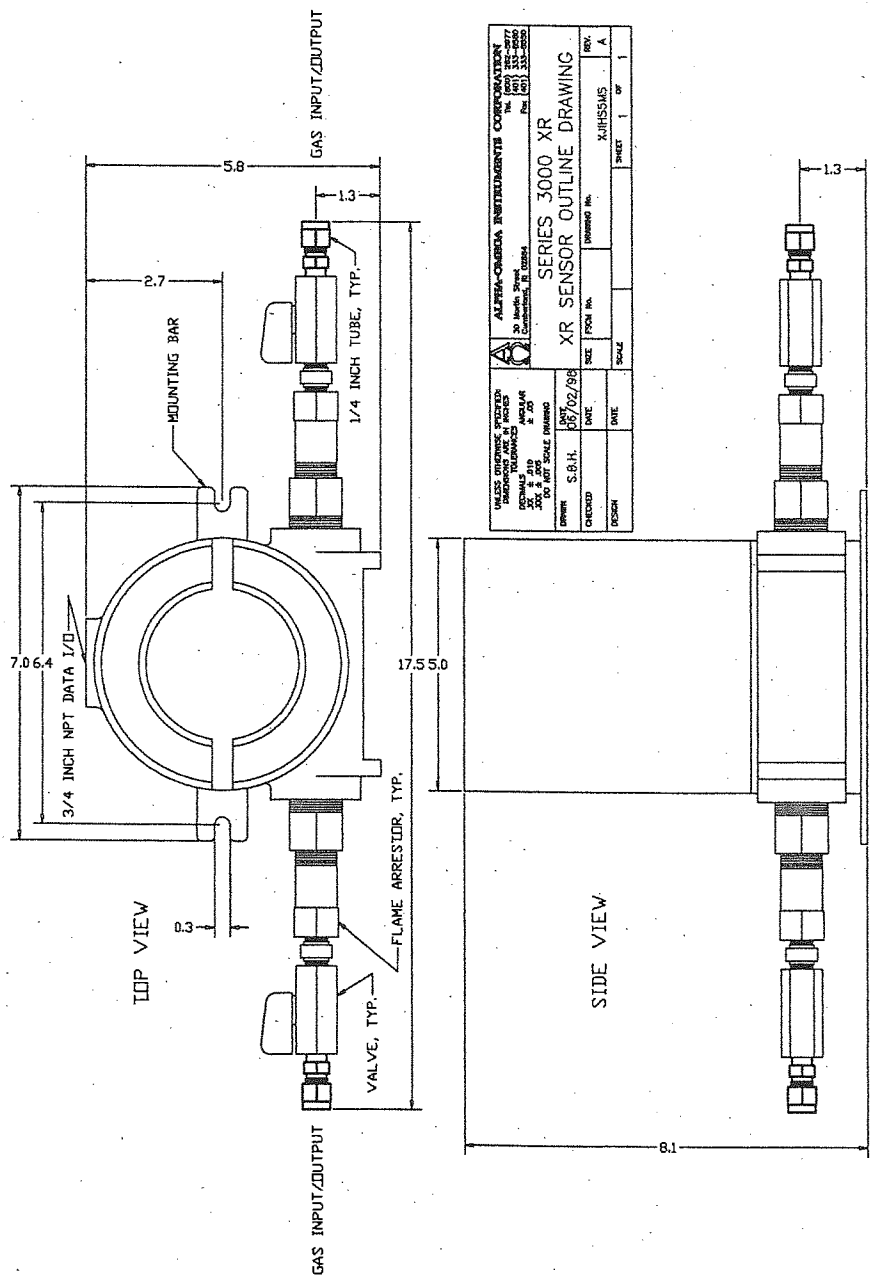
APPENDIX D  
 EXPLOSION PROOF ELECTRONICS/SENSOR  
 CONFIGURATION  
 PART NUMBER EXX  
 FRONT VIEW



UNLESS OTHERWISE SPECIFIED DIMENSIONS ARE IN INCHES TOLERANCES FRACTIONS DECIMALS 1/16 1/8 1/4 3/8 1/2 5/8 3/4 7/8 1 1 1/4 1 1/2 1 3/4 2 2 1/4 2 1/2 3 3 1/4 3 1/2 4 4 1/4 4 1/2 5 5 1/4 5 1/2 6 6 1/4 6 1/2 7 7 1/4 7 1/2 8 8 1/4 8 1/2 9 9 1/4 9 1/2 10 10 1/4 10 1/2 11 11 1/4 11 1/2 12 12 1/4 12 1/2 13 13 1/4 13 1/2 14 14 1/4 14 1/2 15 15 1/4 15 1/2 16 16 1/4 16 1/2 17 17 1/4 17 1/2 18 18 1/4 18 1/2 19 19 1/4 19 1/2 20 20 1/4 20 1/2 21 21 1/4 21 1/2 22 22 1/4 22 1/2 23 23 1/4 23 1/2 24 24 1/4 24 1/2 25 25 1/4 25 1/2 26 26 1/4 26 1/2 27 27 1/4 27 1/2 28 28 1/4 28 1/2 29 29 1/4 29 1/2 30 30 1/4 30 1/2 31 31 1/4 31 1/2 32 32 1/4 32 1/2 33 33 1/4 33 1/2 34 34 1/4 34 1/2 35 35 1/4 35 1/2 36 36 1/4 36 1/2 37 37 1/4 37 1/2 38 38 1/4 38 1/2 39 39 1/4 39 1/2 40 40 1/4 40 1/2 41 41 1/4 41 1/2 42 42 1/4 42 1/2 43 43 1/4 43 1/2 44 44 1/4 44 1/2 45 45 1/4 45 1/2 46 46 1/4 46 1/2 47 47 1/4 47 1/2 48 48 1/4 48 1/2 49 49 1/4 49 1/2 50 50 1/4 50 1/2 51 51 1/4 51 1/2 52 52 1/4 52 1/2 53 53 1/4 53 1/2 54 54 1/4 54 1/2 55 55 1/4 55 1/2 56 56 1/4 56 1/2 57 57 1/4 57 1/2 58 58 1/4 58 1/2 59 59 1/4 59 1/2 60 60 1/4 60 1/2 61 61 1/4 61 1/2 62 62 1/4 62 1/2 63 63 1/4 63 1/2 64 64 1/4 64 1/2 65 65 1/4 65 1/2 66 66 1/4 66 1/2 67 67 1/4 67 1/2 68 68 1/4 68 1/2 69 69 1/4 69 1/2 70 70 1/4 70 1/2 71 71 1/4 71 1/2 72 72 1/4 72 1/2 73 73 1/4 73 1/2 74 74 1/4 74 1/2 75 75 1/4 75 1/2 76 76 1/4 76 1/2 77 77 1/4 77 1/2 78 78 1/4 78 1/2 79 79 1/4 79 1/2 80 80 1/4 80 1/2 81 81 1/4 81 1/2 82 82 1/4 82 1/2 83 83 1/4 83 1/2 84 84 1/4 84 1/2 85 85 1/4 85 1/2 86 86 1/4 86 1/2 87 87 1/4 87 1/2 88 88 1/4 88 1/2 89 89 1/4 89 1/2 90 90 1/4 90 1/2 91 91 1/4 91 1/2 92 92 1/4 92 1/2 93 93 1/4 93 1/2 94 94 1/4 94 1/2 95 95 1/4 95 1/2 96 96 1/4 96 1/2 97 97 1/4 97 1/2 98 98 1/4 98 1/2 99 99 1/4 99 1/2 100 100 1/4 100 1/2 101 101 1/4 101 1/2 102 102 1/4 102 1/2 103 103 1/4 103 1/2 104 104 1/4 104 1/2 105 105 1/4 105 1/2 106 106 1/4 106 1/2 107 107 1/4 107 1/2 108 108 1/4 108 1/2 109 109 1/4 109 1/2 110 110 1/4 110 1/2 111 111 1/4 111 1/2 112 112 1/4 112 1/2 113 113 1/4 113 1/2 114 114 1/4 114 1/2 115 115 1/4 115 1/2 116 116 1/4 116 1/2 117 117 1/4 117 1/2 118 118 1/4 118 1/2 119 119 1/4 119 1/2 120 120 1/4 120 1/2 121 121 1/4 121 1/2 122 122 1/4 122 1/2 123 123 1/4 123 1/2 124 124 1/4 124 1/2 125 125 1/4 125 1/2 126 126 1/4 126 1/2 127 127 1/4 127 1/2 128 128 1/4 128 1/2 129 129 1/4 129 1/2 130 130 1/4 130 1/2 131 131 1/4 131 1/2 132 132 1/4 132 1/2 133 133 1/4 133 1/2 134 134 1/4 134 1/2 135 135 1/4 135 1/2 136 136 1/4 136 1/2 137 137 1/4 137 1/2 138 138 1/4 138 1/2 139 139 1/4 139 1/2 140 140 1/4 140 1/2 141 141 1/4 141 1/2 142 142 1/4 142 1/2 143 143 1/4 143 1/2 144 144 1/4 144 1/2 145 145 1/4 145 1/2 146 146 1/4 146 1/2 147 147 1/4 147 1/2 148 148 1/4 148 1/2 149 149 1/4 149 1/2 150 150 1/4 150 1/2 151 151 1/4 151 1/2 152 152 1/4 152 1/2 153 153 1/4 153 1/2 154 154 1/4 154 1/2 155 155 1/4 155 1/2 156 156 1/4 156 1/2 157 157 1/4 157 1/2 158 158 1/4 158 1/2 159 159 1/4 159 1/2 160 160 1/4 160 1/2 161 161 1/4 161 1/2 162 162 1/4 162 1/2 163 163 1/4 163 1/2 164 164 1/4 164 1/2 165 165 1/4 165 1/2 166 166 1/4 166 1/2 167 167 1/4 167 1/2 168 168 1/4 168 1/2 169 169 1/4 169 1/2 170 170 1/4 170 1/2 171 171 1/4 171 1/2 172 172 1/4 172 1/2 173 173 1/4 173 1/2 174 174 1/4 174 1/2 175 175 1/4 175 1/2 176 176 1/4 176 1/2 177 177 1/4 177 1/2 178 178 1/4 178 1/2 179 179 1/4 179 1/2 180 180 1/4 180 1/2 181 181 1/4 181 1/2 182 182 1/4 182 1/2 183 183 1/4 183 1/2 184 184 1/4 184 1/2 185 185 1/4 185 1/2 186 186 1/4 186 1/2 187 187 1/4 187 1/2 188 188 1/4 188 1/2 189 189 1/4 189 1/2 190 190 1/4 190 1/2 191 191 1/4 191 1/2 192 192 1/4 192 1/2 193 193 1/4 193 1/2 194 194 1/4 194 1/2 195 195 1/4 195 1/2 196 196 1/4 196 1/2 197 197 1/4 197 1/2 198 198 1/4 198 1/2 199 199 1/4 199 1/2 200 200 1/4 200 1/2 201 201 1/4 201 1/2 202 202 1/4 202 1/2 203 203 1/4 203 1/2 204 204 1/4 204 1/2 205 205 1/4 205 1/2 206 206 1/4 206 1/2 207 207 1/4 207 1/2 208 208 1/4 208 1/2 209 209 1/4 209 1/2 210 210 1/4 210 1/2 211 211 1/4 211 1/2 212 212 1/4 212 1/2 213 213 1/4 213 1/2 214 214 1/4 214 1/2 215 215 1/4 215 1/2 216 216 1/4 216 1/2 217 217 1/4 217 1/2 218 218 1/4 218 1/2 219 219 1/4 219 1/2 220 220 1/4 220 1/2 221 221 1/4 221 1/2 222 222 1/4 222 1/2 223 223 1/4 223 1/2 224 224 1/4 224 1/2 225 225 1/4 225 1/2 226 226 1/4 226 1/2 227 227 1/4 227 1/2 228 228 1/4 228 1/2 229 229 1/4 229 1/2 230 230 1/4 230 1/2 231 231 1/4 231 1/2 232 232 1/4 232 1/2 233 233 1/4 233 1/2 234 234 1/4 234 1/2 235 235 1/4 235 1/2 236 236 1/4 236 1/2 237 237 1/4 237 1/2 238 238 1/4 238 1/2 239 239 1/4 239 1/2 240 240 1/4 240 1/2 241 241 1/4 241 1/2 242 242 1/4 242 1/2 243 243 1/4 243 1/2 244 244 1/4 244 1/2 245 245 1/4 245 1/2 246 246 1/4 246 1/2 247 247 1/4 247 1/2 248 248 1/4 248 1/2 249 249 1/4 249 1/2 250 250 1/4 250 1/2 251 251 1/4 251 1/2 252 252 1/4 252 1/2 253 253 1/4 253 1/2 254 254 1/4 254 1/2 255 255 1/4 255 1/2 256 256 1/4 256 1/2 257 257 1/4 257 1/2 258 258 1/4 258 1/2 259 259 1/4 259 1/2 260 260 1/4 260 1/2 261 261 1/4 261 1/2 262 262 1/4 262 1/2 263 263 1/4 263 1/2 264 264 1/4 264 1/2 265 265 1/4 265 1/2 266 266 1/4 266 1/2 267 267 1/4 267 1/2 268 268 1/4 268 1/2 269 269 1/4 269 1/2 270 270 1/4 270 1/2 271 271 1/4 271 1/2 272 272 1/4 272 1/2 273 273 1/4 273 1/2 274 274 1/4 274 1/2 275 275 1/4 275 1/2 276 276 1/4 276 1/2 277 277 1/4 277 1/2 278 278 1/4 278 1/2 279 279 1/4 279 1/2 280 280 1/4 280 1/2 281 281 1/4 281 1/2 282 282 1/4 282 1/2 283 283 1/4 283 1/2 284 284 1/4 284 1/2 285 285 1/4 285 1/2 286 286 1/4 286 1/2 287 287 1/4 287 1/2 288 288 1/4 288 1/2 289 289 1/4 289 1/2 290 290 1/4 290 1/2 291 291 1/4 291 1/2 292 292 1/4 292 1/2 293 293 1/4 293 1/2 294 294 1/4 294 1/2 295 295 1/4 295 1/2 296 296 1/4 296 1/2 297 297 1/4 297 1/2 298 298 1/4 298 1/2 299 299 1/4 299 1/2 300 300 1/4 300 1/2 301 301 1/4 301 1/2 302 302 1/4 302 1/2 303 303 1/4 303 1/2 304 304 1/4 304 1/2 305 305 1/4 305 1/2 306 306 1/4 306 1/2 307 307 1/4 307 1/2 308 308 1/4 308 1/2 309 309 1/4 309 1/2 310 310 1/4 310 1/2 311 311 1/4 311 1/2 312 312 1/4 312 1/2 313 313 1/4 313 1/2 314 314 1/4 314 1/2 315 315 1/4 315 1/2 316 316 1/4 316 1/2 317 317 1/4 317 1/2 318 318 1/4 318 1/2 319 319 1/4 319 1/2 320 320 1/4 320 1/2 321 321 1/4 321 1/2 322 322 1/4 322 1/2 323 323 1/4 323 1/2 324 324 1/4 324 1/2 325 325 1/4 325 1/2 326 326 1/4 326 1/2 327 327 1/4 327 1/2 328 328 1/4 328 1/2 329 329 1/4 329 1/2 330 330 1/4 330 1/2 331 331 1/4 331 1/2 332 332 1/4 332 1/2 333 333 1/4 333 1/2 334 334 1/4 334 1/2 335 335 1/4 335 1/2 336 336 1/4 336 1/2 337 337 1/4 337 1/2 338 338 1/4 338 1/2 339 339 1/4 339 1/2 340 340 1/4 340 1/2 341 341 1/4 341 1/2 342 342 1/4 342 1/2 343 343 1/4 343 1/2 344 344 1/4 344 1/2 345 345 1/4 345 1/2 346 346 1/4 346 1/2 347 347 1/4 347 1/2 348 348 1/4 348 1/2 349 349 1/4 349 1/2 350 350 1/4 350 1/2 351 351 1/4 351 1/2 352 352 1/4 352 1/2 353 353 1/4 353 1/2 354 354 1/4 354 1/2 355 355 1/4 355 1/2 356 356 1/4 356 1/2 357 357 1/4 357 1/2 358 358 1/4 358 1/2 359 359 1/4 359 1/2 360 360 1/4 360 1/2 361 361 1/4 361 1/2 362 362 1/4 362 1/2 363 363 1/4 363 1/2 364 364 1/4 364 1/2 365 365 1/4 365 1/2 366 366 1/4 366 1/2 367 367 1/4 367 1/2 368 368 1/4 368 1/2 369 369 1/4 369 1/2 370 370 1/4 370 1/2 371 371 1/4 371 1/2 372 372 1/4 372 1/2 373 373 1/4 373 1/2 374 374 1/4 374 1/2 375 375 1/4 375 1/2 376 376 1/4 376 1/2 377 377 1/4 377 1/2 378 378 1/4 378 1/2 379 379 1/4 379 1/2 380 380 1/4 380 1/2 381 381 1/4 381 1/2 382 382 1/4 382 1/2 383 383 1/4 383 1/2 384 384 1/4 384 1/2 385 385 1/4 385 1/2 386 386 1/4 386 1/2 387 387 1/4 387 1/2 388 388 1/4 388 1/2 389 389 1/4 389 1/2 390 390 1/4 390 1/2 391 391 1/4 391 1/2 392 392 1/4 392 1/2 393 393 1/4 393 1/2 394 394 1/4 394 1/2 395 395 1/4 395 1/2 396 396 1/4 396 1/2 397 397 1/4 397 1/2 398 398 1/4 398 1/2 399 399 1/4 399 1/2 400 400 1/4 400 1/2 401 401 1/4 401 1/2 402 402 1/4 402 1/2 403 403 1/4 403 1/2 404 404 1/4 404 1/2 405 405 1/4 405 1/2 406 406 1/4 406 1/2 407 407 1/4 407 1/2 408 408 1/4 408 1/2 409 409 1/4 409 1/2 410 410 1/4 410 1/2 411 411 1/4 411 1/2 412 412 1/4 412 1/2 413 413 1/4 413 1/2 414 414 1/4 414 1/2 415 415 1/4 415 1/2 416 416 1/4 416 1/2 417 417 1/4 417 1/2 418 418 1/4 418 1/2 419 419 1/4 419 1/2 420 420 1/4 420 1/2 421 421 1/4 421 1/2 422 422 1/4 422 1/2 423 423 1/4 423 1/2 424 424 1/4 424 1/2 425 425 1/4 425 1/2 426 426 1/4 426 1/2 427 427 1/4 427 1/2 428 428 1/4 428 1/2 429 429 1/4 429 1/2 430 430 1/4 430 1/2 431 431 1/4 431 1/2 432 432 1/4 432 1/2 433 433 1/4 433 1/2 434 434 1/4 434 1/2 435 435 1/4 435 1/2 436 436 1/4 436 1/2 437 437 1/4 437 1/2 438 438 1/4 438 1/2 439 439 1/4 439 1/2 440 440 1/4 440 1/2 441 441 1/4 441 1/2 442 442 1/4 442 1/2 443 443 1/4 443 1/2 444 444 1/4 444 1/2 445 445 1/4 445 1/2 446 446 1/4 446 1/2 447 447 1/4 447 1/2 448 448 1/4 448 1/2 449 449 1/4 449 1/2 450 450 1/4 450 1/2 451 451 1/4 451 1/2 452 452 1/4 452 1/2 453 453 1/4 453 1/2 454 454 1/4 454 1/2 455 455 1/4 455 1/2 456 456 1/4 456 1/2 457 457 1/4 457 1/2 458 458 1/4 458 1/2 459 459 1/4 459 1/2 460 460 1/4 460 1/2 461 461 1/4 461 1/2 462 462 1/4 462 1/2 463 463 1/4 463 1/2 464 464 1/4 464 1/2 465 465 1/4 465 1/2 466 466 1/4 466 1/2 467 467 1/4 467 1/2 468 468 1/4 468 1/2 469 469 1/4 469 1/2 470 470 1/4 470 1/2 471 471 1/4 471 1/2 472 472 1/4 472 1/2 473 473 1/4 473 1/2 474 474 1/4 474 1/2 475 475 1/4 475 1/2 476 476 1/4 476 1/2 477 477 1/4 477 1/2 478 478 1/4 478 1/2 479 479 1/4 479 1/2 480 480 1/4 480 1/2 481 481 1/4 481 1/2 482 482 1/4 482 1/2 483 483 1/4 483 1/2 484 484 1/4 484 1/2 485 485 1/4 485 1/2 486 486 1/4 486 1/2 487 487 1/4 487 1/2 488 488 1/4 488 1/2 489 489 1/4 489 1/2 490 490 1/4 490 1/2 491 491 1/4 491 1/2 492 492 1/4 492 1/2 493 493 1/4 493 1/2 494 494 1/4 494 1/2 495 495 1/4 495 1/2 496 496 1/4 496 1/2 497 497 1/4 497 1/2 498 498 1/4 498 1/2 499 499 1/4 499 1/2 500 500 1/4 500 1/2 501 501 1/4 501 1/2 502 502 1/4 502 1/2 503 503 1/4 503 1/2 504 504 1/4 504 1/2 505 505 1/4 505 1/2 506 506 1/4 506 1/2 507 507 1/4 507 1/2 508 508 1/4 508 1/2 509 509 1/4 509 1/2 510 510 1/4 510 1/2 511 511 1/4 511 1/2 512 512 1/4 512 1/2 513 513 1/4 513 1/2 514 514 1/4 514 1/2 515 515 1/4 515 1/2 516 516 1/4 516 1/2 517 517 1/4 517 1/2 518 518 1/4 518 1/2 519 519 1/4 519 1/2 520 520 1/4 520 1/2 521 521 1/4 521 1/2 522 522 1/4 522 1/2 523 523 1/4 523 1/2 524 524 1/4 524 1/2 525 525 1/4 525 1/2 526 526 1/4 526 1/2 527 527 1/4 527 1/2 528 528 1/4 528 1/2 529 529 1/4 529 1/2 530 530 1/4 530 1/2 531 531 1/4 531 1/2 532 532 1/4 532 1/2 533 533 1/4 533 1/2 534 534 1/4 534 1/2 535 535 1/4 535 1/2 536 536 1/4 536 1/2 537 537 1/4 537 1/2 538 538 1/4 538 1/2 539 539 1/4 539 1/2 540 540 1/4 540 1/2 541 541 1/4 541 1/2 542 542 1/4 542 1/2 543 543 1/4 543 1/2 544 544 1/4 544 1/2 545 545 1/4 545 1/2 546 546 1/4 546 1/2 547 547 1/4 547 1/2 548 548 1/4 548 1/2 549 549 1/4 549 1/2 550 550 1/4 550 1/2 551 551 1/4 551 1/2 552 552 1/4 552 1/2 553 553 1/4 553 1/2 554 554 1/4 554 1/2 555 555 1/4 555 1/2 556 556 1/4 556 1/2 557 557 1/4 557 1/2 558 558 1/4 558 1/2 559 559 1/4 559 1/2 560 560 1/4 560 1/2 561 561 1/4 561 1/2 562 562 1/4 562 1/2 563 563 1/4 563 1/2 564 564 1/4 564 1/2 565 565 1/4 565 1/2 566 566 1/4 566 1/2 567 567 1/4 567 1/2 568 568 1/4 568 1/2 569 569 1/4 569 1/2 570 570 1/4 570 1/2 571 571 1/4 571 1/2 572 572 1/4 572 1/2 573 573 1/4 573 1/2 574 574 1/4 574 1/2 575 575 1/4 575 1/2 576 576 1/4 576 1/2 577 577 1/4 577 1/2 578 578 1/4 578 1/2 579 579 1/4 579 1/2 580 580 1/4 580 1/2 581 581 1/4 581 1/2 582 582 1/4 582 1/2 583 583 1/4 583 1/2 584 584 1/4 584 1/2 585 585 1/4 585 1/2 586 586 1/4 586 1/2 587 587 1/4 587 1/2 588 588 1/4 588 1/2 589 589 1/4 589 1/2 590 590 1/4 590 1/2 591 591 1/4 591 1/2 592 592 1/4 592 1/2 593 593 1/4 593 1/2 594 594 1/4 594 1/2 595 595 1/4 595 1/2 596 596 1/4 596 1/2 597 597 1/4 597 1/2 598 598 1/4 598 1/2 599 599 1/4 599 1/2 600 600 1/4 600 1/2 601 601 1/4 601 1/2 602 602 1/4 602 1/2 603 603 1/4 603 1/2 604 604 1/4 604 1/2 605 605 1/4 605 1/2 606 606 1/4 606 1/2 607 607 1/4 607 1/2 608 608 1/4 608 1/2 609 609 1/4 609 1/2 610 610 1/4 610 1/2 611 611 1/4 611 1/2 612 612 1/4 612 1/2 613 613 1/4 613 1/2	
--	--



APPENDIX E  
EXPLOSION PROOF SENSOR  
HOUSING USED WITH THE  
BTX & PTX CONFIGURATIONS





THIS PAGE HAS BEEN INTENTIONALLY LEFT BLANK

## ADDENDUM 1

### Sensor Auto-Isolation Feature (P/N 3SOL-Auto)

If the analyzer in question has been equipped with the aforementioned option, please review the following information before operating the analyzer.

The Series 3000 Trace Oxygen Analyzer features a patented "Advanced Long-Life" Electrochemical Sensor. Like all electrochemical trace oxygen sensors, exposure to high oxygen concentrations, such as that contained in air (20,900 PPM), must be avoided to help preserve the longevity of the sensor. To minimize exposing the Series 3000 to excessive levels of oxygen (excessive levels are concentrations beyond the highest range of the analyzer), Alpha Omega Instruments offers an optional **Sensor Auto-Isolation** feature.

Sensor Auto-Isolation provides improved recovery time when the instrument is exposed to "excessive" levels of oxygen. This is accomplished by using the analyzer's third oxygen alarm (Alarm 3) set point and relay output in conjunction with a pair of electrically actuated solenoid valves. The valves have been installed on the sample gas inlet and outlet ports of the sensor housing and with no power applied are closed. Alarm 3 has been preset at the factory to trip at an oxygen concentration equivalent to 20% of the analyzer's highest range. For example, if the analyzer in question has three ranges such as 0-100/1,000/10,000, Alarm 3 will be set to close the solenoids at an oxygen concentration equivalent of 2,000 PPM (20% of 10,000 PPM).

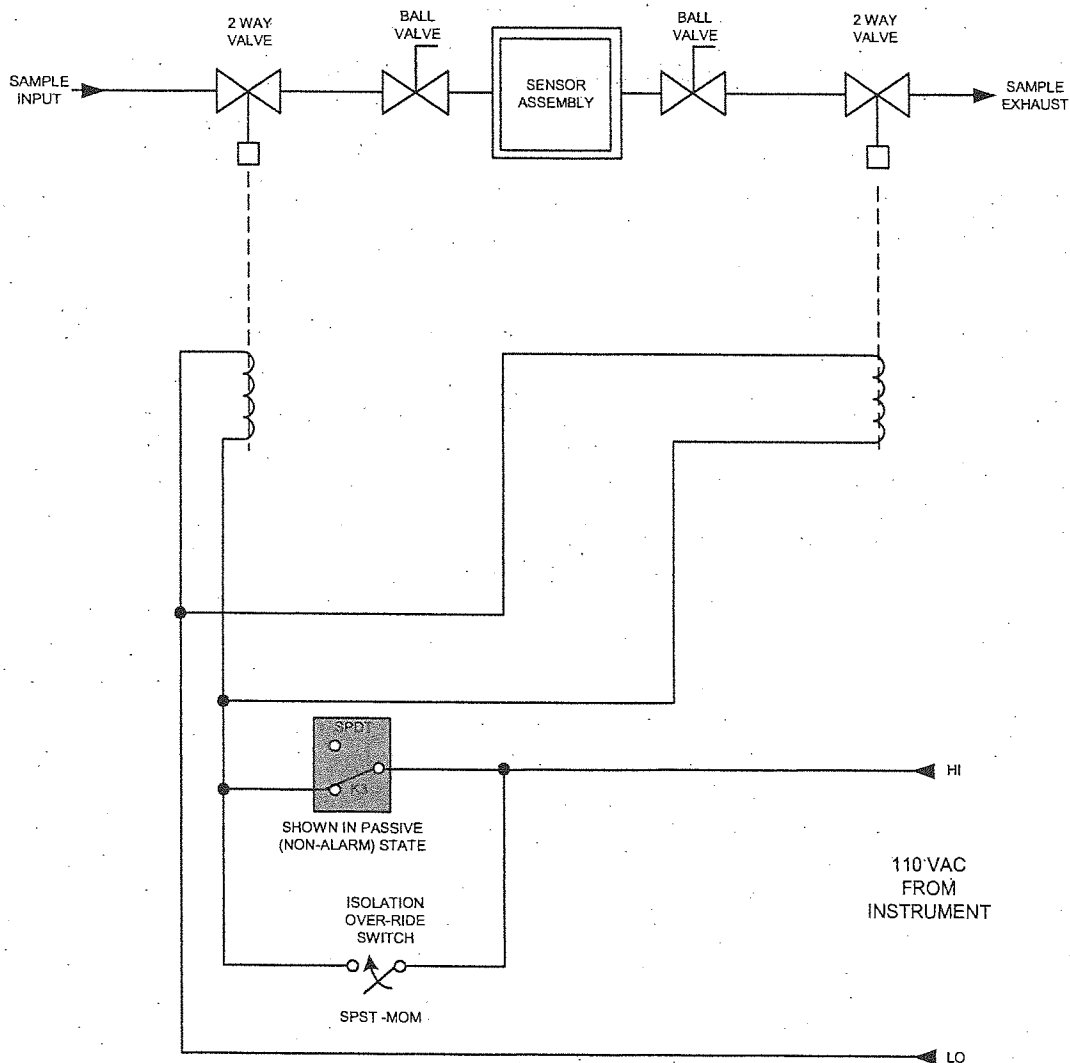
During normal operation, if the oxygen concentration exceeds the 20% value the solenoid valves will close, isolating the sensor and preventing flow of sample gas. The power to the solenoids are wired to the NC contacts of the relay associated with Oxygen Alarm 3. This relay has been configured to latch so the relay contacts will remain in the "tripped" state preventing power to the solenoid valves until the alarm condition has been manually cleared. When the alarm condition is manually cleared using the front panel button "Alarm 3", power is applied to the valves allowing sample flow through the sensor housing. When clearing of the alarm is desired depress the Alarm 3 button three times to clear the alarm condition. Pressing the button once silences the alarm, twice enters alarm setup mode, and three times establishes normal operation.

If the oxygen concentration should rise above the set point after the alarm has been cleared, in all likelihood the system needs to be purged with an inert gas (i.e. nitrogen, argon, etc.). In this scenario, the valve positions must be forced open to allow passage of inert gas. To accomplish this, an override switch has been installed on the right side of the analyzer labeled "Auto-Isolation Override". The switch is a momentary type (needs to be manually held) to maintain the open position of the valves. While holding the switch down, ensure there is a flow of sample gas and wait until the front panel meter indicates an acceptable concentration of oxygen (below the 20% level described above). Once accomplished, release the switch and proceed clearing the alarm as described in the previous paragraph.

ADDENDUM 1 (continued)

Sensor Auto-Isolation Feature (P/N 3SOL-Auto)

# 3-SOL-AUTO



ADDENDUM 2

**AC-Actuated 3-way Solenoid Valve (p/n-3-3waySOL-115) and  
Sensor AutoPurge Protection (p/n- 3-AutoPurge)**

If the analyzer in question has been equipped with the two aforementioned options, please review the following information before operating the analyzer.

The AC-actuated 3-way Solenoid Valve has been installed on the sample gas inlet line and is used to select between an inert gas purge (i.e. nitrogen, argon, helium, etc.) and the sample gas source. The optional Sensor Auto-Purge Protection feature provides the added capability of protecting the oxygen sensor in the event high oxygen concentrations are introduced into the sample gas. In addition to protecting the oxygen sensor from potential damage, these two features, when working in tandem, enhance system recovery time should such a disruption take place.

Under normal operation, the control logic of the Series 3000 directs the three way solenoid to provide a flow of sample gas by energizing the solenoid valve. When equipped with the Sensor Auto-Purge Protection feature, the control logic is configured to detect oxygen levels above a preset limit and will automatically select the purge gas line located at the top of the solenoid valve if this limit has been exceeded.

When the Auto-Purge Protection feature has been supplied, Oxygen Alarm 3 is configured at the factory to trip at 20% (user adjustable) of full scale on the analyzer's highest range, and configured as a high alarm (trip upon increasing O<sub>2</sub>). This alarm can be configured as a latching alarm or as non-latching. When configured as a latching alarm, the alarm will remain in the tripped state until manually acknowledged on the front panel, even if the O<sub>2</sub> level drops back below the trip point. To acknowledge the alarm, depress the Alarm 3 button three times to CLEAR the alarm without adjusting the level. If the incoming sample O<sub>2</sub> level is still above the Alarm #3 trip-point, then the conditions causing the instrument to switch to purge in the first place will repeat. Leave the instrument operating on the purge gas and investigate the reason for the over-range sample condition.

When the alarm is configured as non-latching, the alarm will automatically reset when the oxygen level drops below the alarm level. This will automatically select the sample input once again. If the O<sub>2</sub> level rises and remains above the Alarm #3 trip-point for more than 1 minute, then the alarm should be set for latching behavior; this will allow the user to troubleshoot the nature of the sample gas problem. The first potential problem to investigate is leakage of excessive levels of oxygen in the sample gas lines.

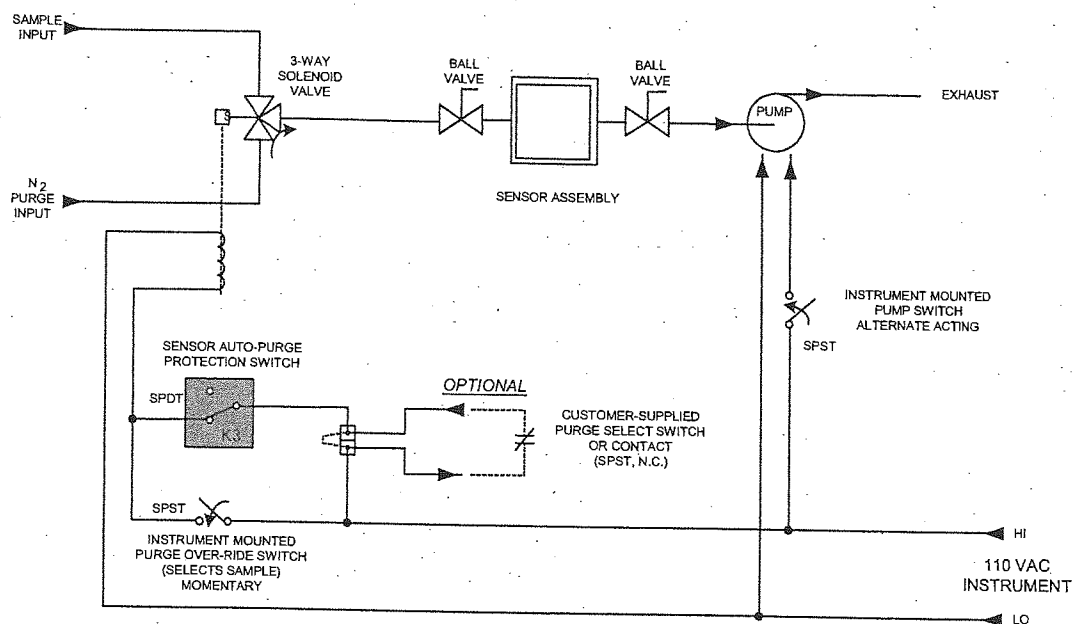
Once the abnormally high O<sub>2</sub> sample condition is rectified, toggle the "Auto-Purge Override" switch on right of the side of the analyzer, holding it down. Depressing the switch will allow sample gas to flow through the sensor. If the O<sub>2</sub> level rises and remains above the Alarm #3 trip-point for more than 1 minute, then release the switch, allowing the instrument to return to purge and again investigate the source of the excess oxygen in the sample line.

Note that setup of either "Auto-Clear" or "Manual Clear" for Alarm #3 affects the operation of ALL alarms, in particular the **two** remaining oxygen alarm relays as they will all behave in the same way. Please also note that Instruments equipped with the Sensor AutoPurge Protection option have only (2) oxygen alarms remaining for customer use. **CAUTION:** When ENERGIZED, The Solenoid Valve Body can be **HOT!**

ADDENDUM 2 (continued)

**AC-Actuated 3-way Solenoid Valve (p/n-3-3waySOL-115) and  
Sensor AutoPurge Protection (p/n- 3-AutoPurge)**

*3-3WaySOL-115 & 3-AutoPurge*



ADDENDUM 3

**Sample Line Block & Bleed / Sensor-Isolation  
Sample Gas Delivery System**

Part no.: 3-BLBL/ISO-SS

**Recommended for "portable/trans-portable" Trace O<sub>2</sub> Analysis applications  
Spot or Intermittent Trace O<sub>2</sub> Readings at Different Sample Tap Locations**

The "Sample Line Block & Bleed / Sensor-Isolation Gas Delivery System" option serves as a convenient means to "PURGE" (or "BLEED") the sample line before switching the sensor over to the "SAMPLE" position, yet simultaneously keeping the sensor in an "Isolated" state (with a pre-purged, low-O<sub>2</sub> background gas atmosphere sealed inside). Upon relocation and connection to subsequent gas samples, the Alpha Omega Instruments Trace Oxygen Analyzer is, therefore, *primed-and-ready-to-go* to make a trace O<sub>2</sub> reading, because:

1. The O<sub>2</sub> sensor is already reading and equilibrated on a low O<sub>2</sub> sample, immediately prior to switching over to the next gas sample.
2. At the same time, immediately prior to being switched over to the next sample, also, the sample line is completely "pre-purged" by the next gas sample (purging out all of the previous gas sample, and (or) any possibility of entrained air.

The "Sample Line Block & Bleed / Sensor-Isolation Gas Delivery System" option utilizes the analyzer's own sample conditioning components [i.e., pump, regulator, flowmeter, filter(s), etc.] to perform the "PURGE" (bleed) operation.

Regardless of whether each gas sample is under pressure (with flow controlled by a regulator or needle valve) or under vacuum conditions (aspirated by a sample pump or other means), Used as a flow pre-set adjustment, and because the pressure differential across the sensor is negligible,

**CAUTION: IT IS ESSENTIAL FOR THE SENSOR'S LONGEVITY AND PERFORMANCE BELOW 100 PPM THAT THE RETAINED GAS INSIDE THE SENSOR HOUSING AFTER ISOLATION IS AT A LOW TRACE O<sub>2</sub> LEVEL ( Below the highest range of the instrument ).**

ADDENDUM 3 CONTINUED...

OPERATION

1. Ensure that the Analyzer is ON, and that the "Block & Bleed / Sensor Isolation 4-way Sample Selector Valve" is pointing toward the "BLEED / BYPASS" label (or toward the port connected to the base of the flowmeter).
2. Connect the Sample Gas to the 1/4" compression Sample Inlet Fitting on "Block & Bleed / Sensor Isolation 4-way Sample Selector Valve." (Note: this is the only unused port connection).
3. Using available sample pump, regulator, or other flow controls, establish the suggested 0.5 slpm (0.2 to 1.2 slpm) sample flow.

Note: While in the "BLEED / BYPASS" position, the sample gas is re-directed from the sample inlet to the outlet, "bypassing" the sensor. Bleed the sample line for a few seconds to a few minutes (depending upon sample line length, any filter bowls or other "dead volumes", etc.).

4. Switch the "Block & Bleed / Sensor Isolation Four-Way sample Selector Valve" to the "MEASURE" position (pointing toward the sensor housing). Verify that the flow rate remains the same.
5. After allowing enough time on the sample for a sufficiently stable O<sub>2</sub> reading, switch back to the "BLEED/BYPASS" position.

**Note: ENSURE** that the O<sub>2</sub> reading while in the "BLEED / BYPASS" position (Bypass & Bleed / Sensor Isolation) state is

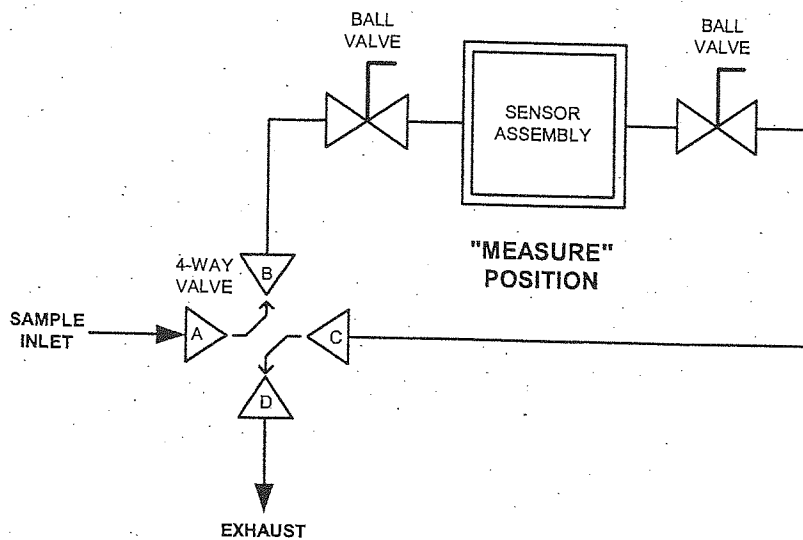
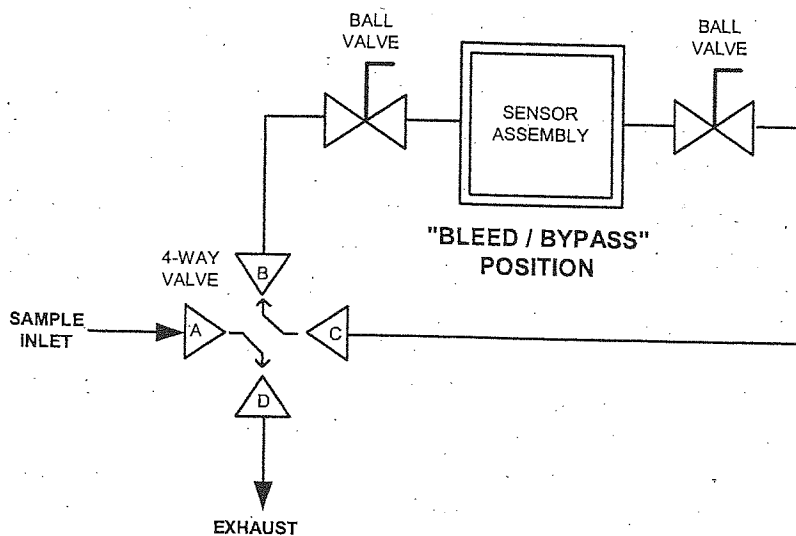
**BELOW 1,000ppm.**

Otherwise, purge the sensor out IMMEDIATELY using a better purity purge gas.

ADDENDUM 3 CONTINUED...

**Sample Line Block & Bleed / Sensor-Isolation  
Sample Gas Delivery System**

Part no.: 3-BLBL/ISO-SS





## ADDENDUM 4

## INTERNAL DATALOGGER

If the product purchased from Alpha Omega Instruments is equipped with a data logger, please review the following sections carefully as they contain important operational information. In addition, a separate manual, dedicated strictly to the data logger, has been included and it too should be referenced.

Alpha Omega Instrument's internal data logger is a compact sized device that is powered from a battery installed within the data logger. This device provides four channels with a capacity to store up to a total of 32,000 data readings with a user-selectable data capture rate (please refer to the data logger manual for more information on this topic). The data logger has been set up at the factory for single channel operation. As such, all 32,000 data readings are available for that channel. If two channels are used, up to 16,000 data readings per channel is provided. There are two cable connections from the data logger to the instrument. One connects the 0-2 VDC output from the instrument's main printed circuit board to Input Channel 1 of the data logger. The second connection extends the computer connection to the outside of the instrument so that the data logger can be launched and data retrieved without having to open the instrument's cover.

Typically, the data logger is installed inside the instrument's enclosure. However, there are instances when due to either space constraints or a specific customer request, the data logger may be mounted on the outside surface or remotely. With respect to routine maintenance, the only item that needs to be addressed is replacement of the battery inside the data logger. The battery used is a CR2032 type that is available from most stores that sell replacement batteries. **Note: Prior to removing the battery, remove AC power from the instrument.** Replacing the battery should be performed once every 12 months regardless of how often the data logger is used.

**Battery Replacement**

To access the data logger, open the cover of the instrument and swing the front panel of the analyzer open to access the device. To remove the data logger, unplug the two cables from the data logger, and grasp the device firmly and lift with a slight twisting motion to disengage the 3M fastening material. The data logger can then be opened and the coin-shaped battery replaced according to the instructions in the Data Logger Manual. When reinstalling the data logger, position the device over the mating patch of 3M fastening material, and push on the data logger to engage the material. Replace the cables - the gray slender plug is located into the top connector (Data Channel One), and the larger black computer interface cable plug is located into the bottom connector (the connector receptacle with the metal ring). Then close the instrument's front panel and clear cover.

## ALPHA OMEGA INSTRUMENTS CORP.

## MANUAL ADDENDUM

ADDENDUM 4 CONTINUED...**Data Logger Software**

Follow the instructions in the attached software manual to install the software into the personal computer to be used for data launching and retrieval. Install the communications cable from the computer being used (DB-9 connector) to the analyzer's data logger connector, located on the right side of the instrument.

When the data logger is launched, the user will have to know the data interval desired between points. This interval can range from 0.5 seconds between points to over 9 hours between points. By multiplying the data interval times 32,000, an estimate of the full capacity time for the logger can be calculated.

The user will also need to select between the types of data acquisition available. One will permit the logger to fill its memory with data and stop; a second will allow the logger to overwrite the oldest data once filled. When the data is retrieved, the last 32,000 data points will be downloaded to the PC.

Each data point will be time-stamped, using the time stamp in the PC being used. Please insure that the time and data within the PC are correct before taking data. Each time the Data Logger is launched, all old data will be deleted. Each time the data is retrieved from the Data Logger, data acquisition is stopped, and the logger must be launched again.



Depending on the specific product purchased from Alpha Omega Instruments, the instrument in question may be equipped with three measuring ranges together with autoranging. If this is the case, prior to logging any data, the instrument must be setup with the autoranging feature turned off, and the instrument set to one specific range. Refer to the section of the manual that discusses manual range changing.

The conversion of the 0-2 VDC output from the data logger to a specific oxygen concentration is quite simple. To calculate the oxygen concentration from the data logger the example used below is based on a single range of measurement of 0-10 PPM with an output from the data logger of 0.5 VDC.

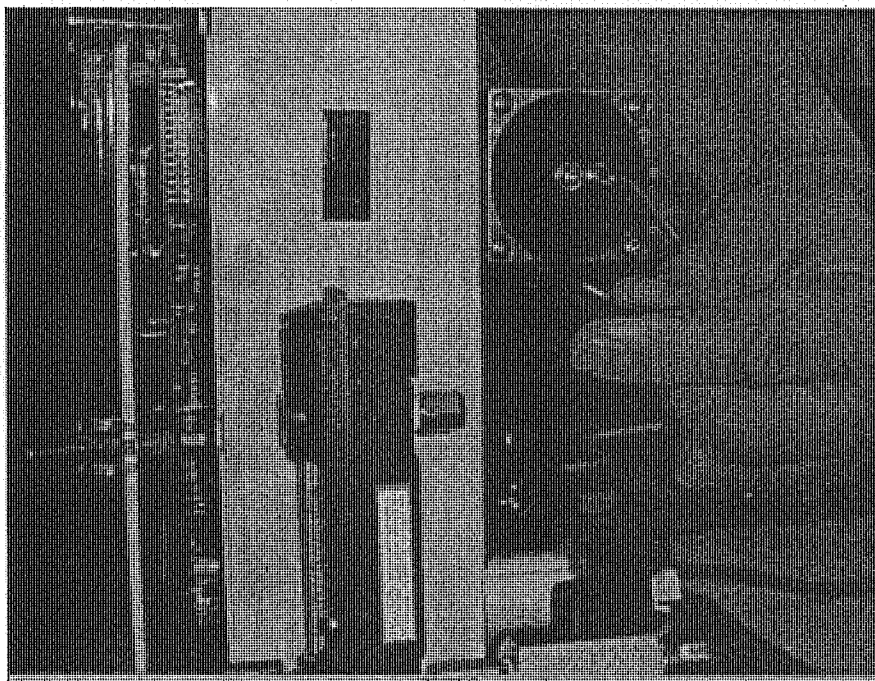
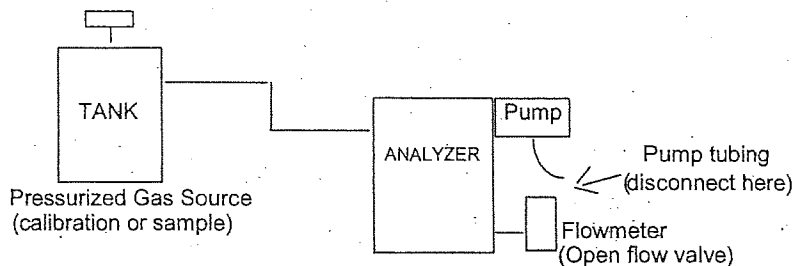
$$\frac{10 \text{ PPM}}{X} = \frac{2 \text{ VDC}}{0.5 \text{ VDC}}$$

$$X = \frac{10 (0.5)}{2} = 2.5 \text{ PPM}$$

## ADDENDUM 5

## HIGH VOLUME PUMP

If the analyzer had been supplied with a high volume pump, when operating the analyzer from a pressurized gas source, disconnect the pump tubing at the flow meter, fully open the flow meter valve, and **TURN THE PUMP OFF**.



Disconnect tubing at the flowmeter