



LABCONCO CORPORATION 8811 Prospect Ave, Kansas City, MO 64132  
(816) 333-8811, Fax (816) 363-0130, (800) 821-5525

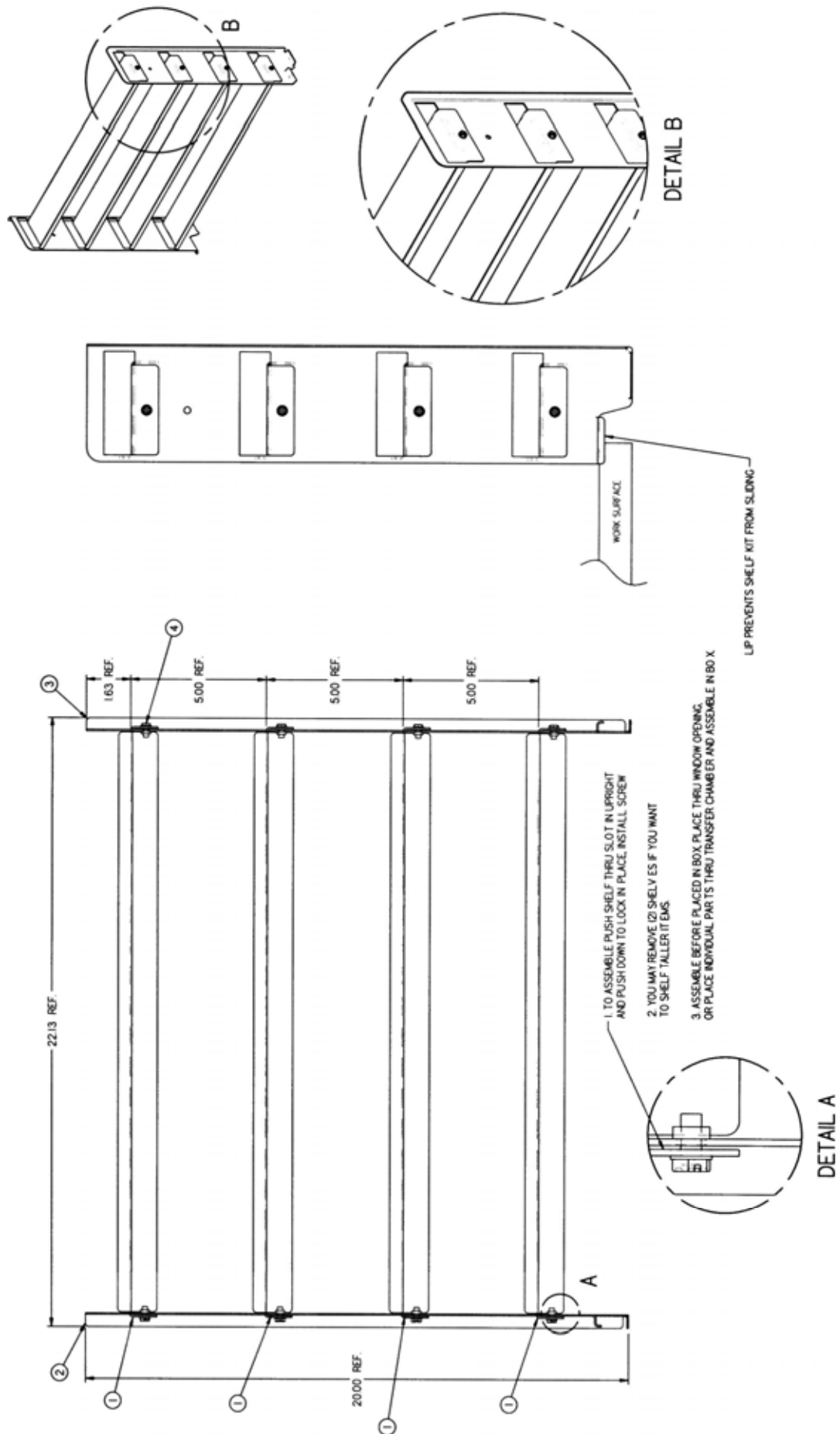
## **Side Interior Storage Shelf Kit No. 5235001**

### **Operation**

The side interior shelf is positioned along the left side of the main glove box chamber. It is within easy reach and extends usable space by an additional 240 square inches or 25%. Not all the shelves need to be used, the user may select how many shelves are necessary. Follow the installation procedure below to assemble the side shelf kit.

### **Installation Procedure**

1. The left side interior storage shelf consists of four shelves and two uprights. The shelf kit can be assembled inside the main chamber of the glove box by bringing all the components through the transfer chamber. Alternatively, the front view window may be temporarily removed to insert the fully assembled shelf kit.
2. Locate the two uprights, both left and right, with at least two shelves. Remove the protective paper from all the stainless steel shelves.
3. Next, assemble one shelf to the two uprights by pushing the shelf with left and right side tab oriented downwards through the upper slots in the upright and push down to lock in place. Install a screw on both sides to secure. Repeat the procedure for the second shelf.
4. Select additional shelves as needed and repeat the procedure. You may adjust the position and number of shelves depending on the heights of items to be stored. Each shelf has an outer lip that is ideal for keeping a box of wipes in place; if required, any shelf may be installed with the lip to the left wall of the glove box.
5. Place the side interior shelf kit against the left wall of the glove box with the lower front ledge resting on the black work surface and the back ledge resting on the glove box liner.
6. Installation is now complete.



## **Warranty**

Labconco provides a warranty on all parts and factory workmanship. The warranty includes areas of defective material and workmanship, provided such defect results from normal and proper use of the equipment.

The warranty for all Labconco products will expire one year from date of installation or two years from date of shipment from Labconco, whichever is sooner, except the following;

- Purifier® Delta® Series Biological Safety Cabinets and PuriCare® Lab Animal Research Stations carry a three-year warranty from date of installation or four years from date of shipment from Labconco, whichever is sooner.
- SteamScrubber® & FlaskScrubber® Glassware Washers carry a two-year warranty from date of installation or three years from date of shipment from Labconco, whichever is sooner.
- Blood Drawing Chairs carry a ten year warranty.
- Carts carry a lifetime warranty.
- Glassware is not warranted from breakage when dropped or mishandled.

This limited warranty covers parts and labor, but not transportation and insurance charges. In the event of a warranty claim, contact Labconco Corporation or the dealer who sold you the product. If the cause is determined to be a manufacturing fault, the dealer or Labconco Corporation will repair or replace all defective parts to restore the unit to operation. Under no circumstances shall Labconco Corporation be liable for indirect, consequential, or special damages of any kind. This statement may be altered by a specific published amendment. No individual has authorization to alter the provisions of this warranty policy or its amendments. Lamps and filters are not covered by this warranty. Damage due to corrosion or accidental breakage is not covered.

## **Returned or Damaged Goods**

Do not return goods without the prior authorization from Labconco. Unauthorized returns will not be accepted. If your shipment was damaged in transit, you must file a claim directly with the freight carrier. Labconco Corporation and its dealers are not responsible for shipping damages.

The United States Interstate Commerce Commission rules require that claims be filed with the delivery carrier within fifteen (15) days of delivery.

## **Limitation of Liability**

The disposal and/or emission of substances used in connection with this equipment may be governed by various federal, state, or local regulations. All users of this equipment are required to become familiar with any regulations that apply in the user's area concerning the dumping of waste materials in or upon water, land, or air and to comply with such regulations. Labconco Corporation is held harmless with respect to user's compliance with such regulations.

## **Contacting Labconco Corporation**

If you have questions that are not addressed in this manual, or if you need technical assistance, contact Labconco's Customer Service Department or Labconco's Product Service Department at 1-800-821-5525 or 1-816-333-8811, between the hours of 7:00 a.m. and 6:00 p.m., Central Standard Time.