



LABCONCO CORPORATION 8811 Prospect Ave, Kansas City, MO 64132  
(816) 333-8811, Fax (816) 363-0130, (800) 821-5525

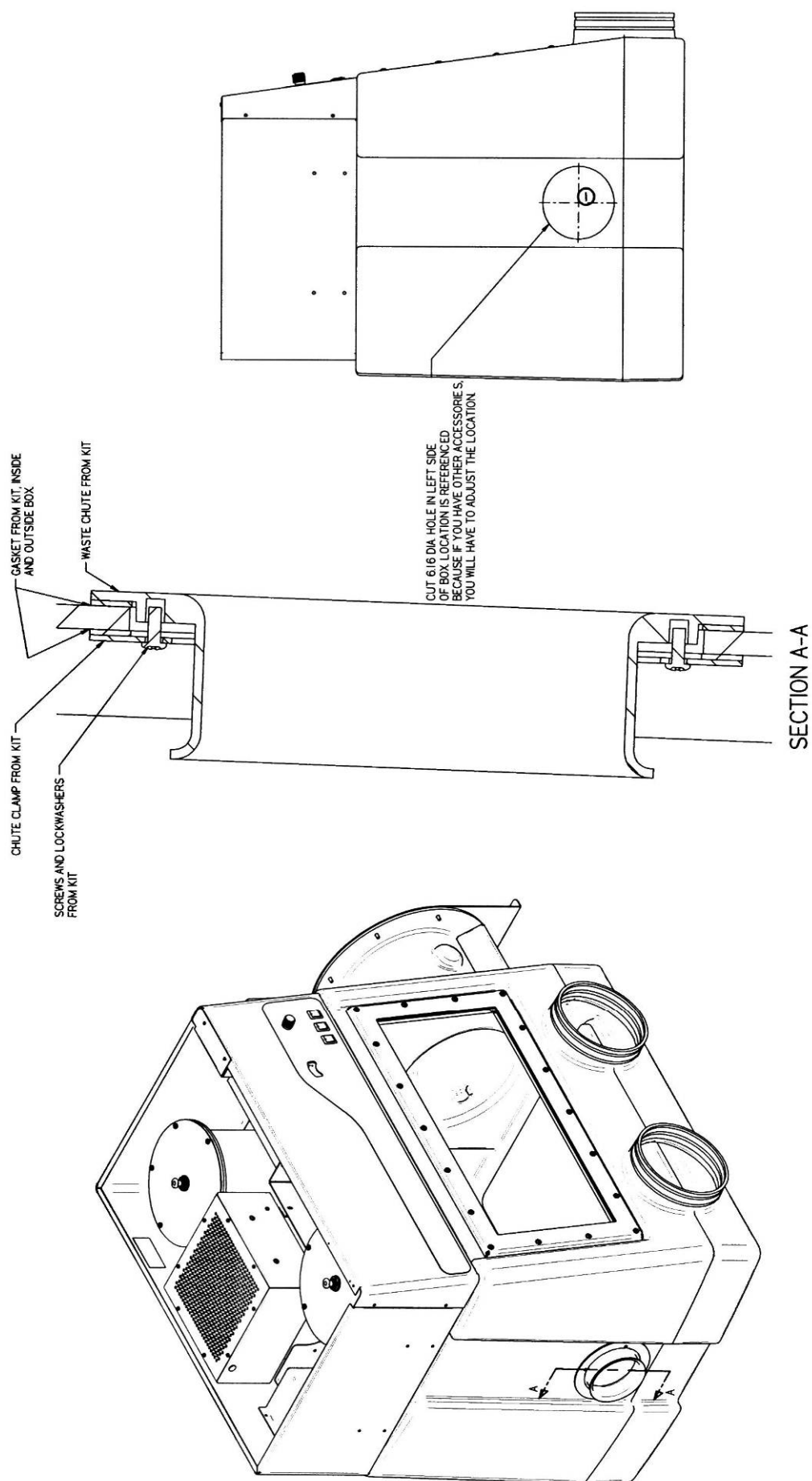
## Waste Chute Kit No. 5245800

### Operation

The Waste Chute provides a 4.5" (11.4 cm) diameter pass-through port to attach an external waste bag. The minimum waste bag size is 8.5" wide. Waste bags and bands are not included; contact your laboratory supply dealer to order waste bags and bands. **IMPORTANT: The Waste Chute is only recommended for the Precise HEPA-Filtered Glove Box or XPert Weigh Box operated under negative pressure.** A rubber stopper plug is provided to close off the port from the inside.

### Installation Procedure

1. Determine the desired location to mount the sealed Waste Chute. The pictorial included with this instruction sheet only shows one typical location. Other flat locations can be chosen. **The consideration of location should not be underestimated. Once the glove box liner shell is altered, it cannot be changed back to the original condition.**
2. Place the hole template from the kit in the desired location of choice. Secure the template in place with any adhesive tape. Trace the 6.16" (15.6 cm) hole with a No. 2 pencil. Keep the template in place.
3. With a drill and 0.25" (6.3 mm) diameter drill bit, start a hole in the middle of the 6.16" diameter traced hole.
4. With a reciprocating saw and a fine tooth blade for precise cuts, cut the 6.16" hole.
5. Place the two gaskets from the kit on both the inside edge of the waste chute and the chute clamp. See the attached pictorial in Section A-A.
6. Place the Waste Chute through the 6.16" diameter hole from the inside of the glove box.
7. With the screws and lockwashers from the kit, secure the Waste Chute with the chute clamp.
8. Installation is now complete.



## **Warranty**

Labconco provides a warranty on all parts and factory workmanship. The warranty includes areas of defective material and workmanship, provided such defect results from normal and proper use of the equipment.

The warranty for all Labconco products will expire one year from date of installation or two years from date of shipment from Labconco, whichever is sooner, except the following;

- Purifier® Delta® Series Biological Safety Cabinets and PuriCare® Lab Animal Research Stations carry a three-year warranty from date of installation or four years from date of shipment from Labconco, whichever is sooner.
- SteamScrubber® & FlaskScrubber® Glassware Washers carry a two-year warranty from date of installation or three years from date of shipment from Labconco, whichever is sooner.
- Blood Drawing Chairs carry a ten year warranty.
- Carts carry a lifetime warranty.
- Glassware is not warranted from breakage when dropped or mishandled.

This limited warranty covers parts and labor, but not transportation and insurance charges. In the event of a warranty claim, contact Labconco Corporation or the dealer who sold you the product. If the cause is determined to be a manufacturing fault, the dealer or Labconco Corporation will repair or replace all defective parts to restore the unit to operation. Under no circumstances shall Labconco Corporation be liable for indirect, consequential, or special damages of any kind. This statement may be altered by a specific published amendment. No individual has authorization to alter the provisions of this warranty policy or its amendments. Lamps and filters are not covered by this warranty. Damage due to corrosion or accidental breakage is not covered.

## **Returned or Damaged Goods**

Do not return goods without the prior authorization from Labconco. Unauthorized returns will not be accepted. If your shipment was damaged in transit, you must file a claim directly with the freight carrier. Labconco Corporation and its dealers are not responsible for shipping damages.

The United States Interstate Commerce Commission rules require that claims be filed with the delivery carrier within fifteen (15) days of delivery.

## **Limitation of Liability**

The disposal and/or emission of substances used in connection with this equipment may be governed by various federal, state, or local regulations. All users of this equipment are required to become familiar with any regulations that apply in the user's area concerning the dumping of waste materials in or upon water, land, or air and to comply with such regulations. Labconco Corporation is held harmless with respect to user's compliance with such regulations.

## **Contacting Labconco Corporation**

If you have questions that are not addressed in this manual, or if you need technical assistance, contact Labconco's Customer Service Department or Labconco's Product Service Department at 1-800-821-5525 or 1-816-333-8811, between the hours of 7:00 a.m. and 6:00 p.m., Central Standard Time.