



LABCONCO CORPORATION 8811 Prospect Ave, Kansas City, MO 64132
(816) 333-8811, Fax (816) 363-0130, (800) 821-5525

U.V. Lamp (Field Installed)

Installation-Contact Product Service before starting: 1-800-522-7658

These instructions are to convert Models: 90005-00 to 90006-00

90005-01 to 90006-01

90005-02 to 90006-02

90005-03 to 90006-03

Mechanical

1. Mount U.V. Lamp assembly to (2) 1/4-20 clinch studs in cabinet as shown in figure 1, with (2) conduit hangers and (2) serrated lock nuts 1/4-20 and (2) machine screws 1/4-20 x 1-1/2.
2. Mount ballast - 115V or 230V, as required to (2) #10-24 clinch studs in cabinet as shown in figure 1, with (2) serrated lock nuts #10-24
3. Mount dump/dispense valve assembly - 115V or 230V - as required to (2) #10-24 clinch studs in cabinet as shown in figure 1 with (2) serrated lock nuts #10-24.
4. Mount labels (Org. adsorption and ultraviolet) on stainless steel front cover as shown in figure 1.

NOTE: It will be necessary to order 90472-01 HPLC polishing kit.

Electrical

1. Connect one lead from U.V. lamp assembly to wiring harness line (white marked 2D). Remove terminal in end of harness before connecting. Connect other lead from lamp assembly to the ballast. Connect the lead from the ballast to the wiring harness line (black marked 1D). See figure 1.
2. Remove valve cable from plastic bag and connect terminals to the dump/dispense valve. Plug other end of cable into J5, Dump Valve, on PC board - backside of display housing. See figure 1.

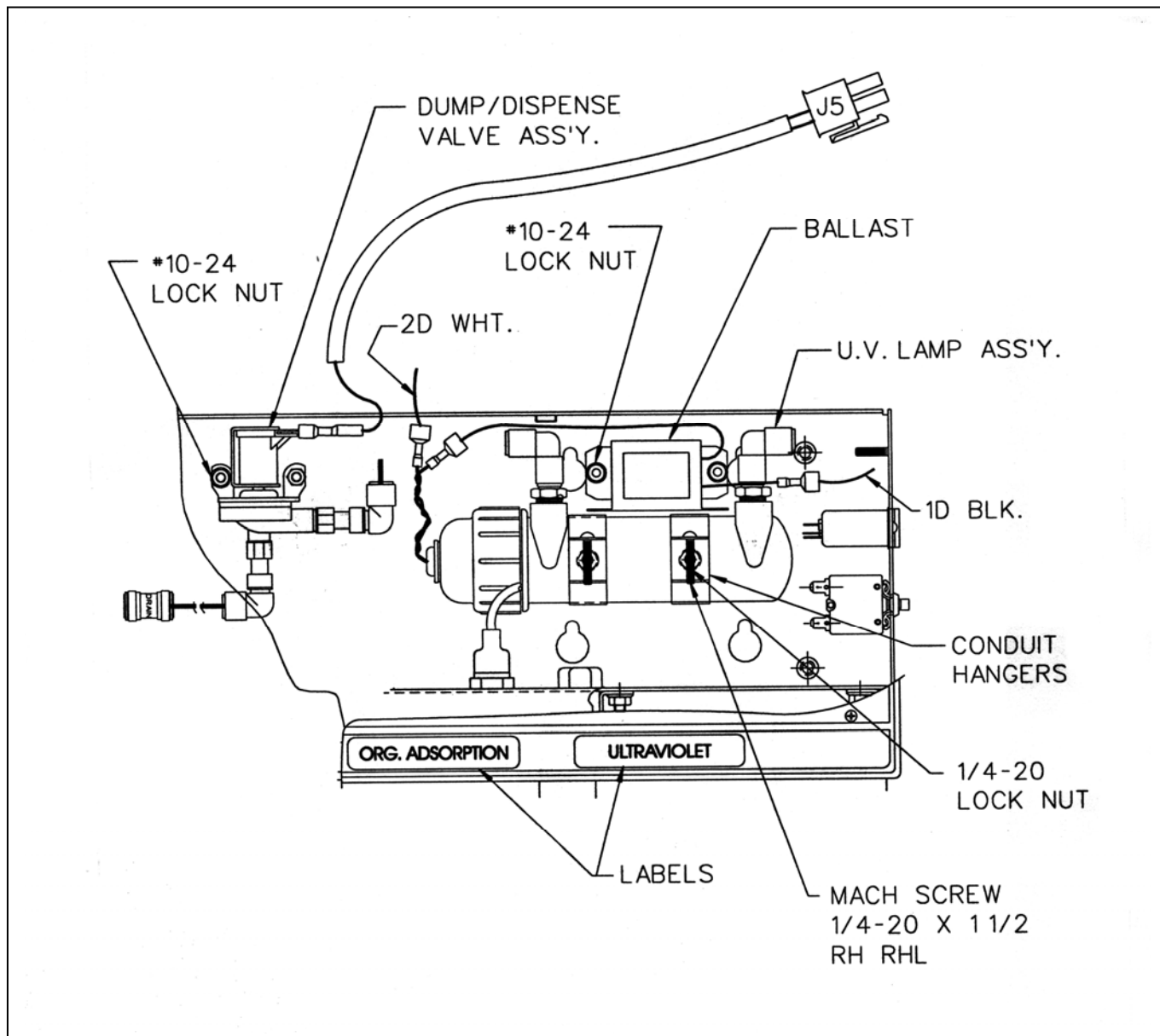


Figure 1

Plumbing - See Figure 2

Gun and Cabinet Dispense Valve

1. Remove and discard 6.5" long tubing running from water dispense assembly to the check valve. Replace with the two-way divider assembly. Connect check valve to the two-way divider assembly. See figure 2.
2. Connect 13" tubing coming out of the dump/dispense valve assembly to the two-way divider assembly (use tube support).
3. Remove the drain coupling from the 21." long tubing coming out of the dump/dispense valve assembly and run through hole in the bottom of the cabinet at the far left end. Reconnect the drain coupling.
4. Disconnect 10" long tubing coming out of the organic adsorption filter housing at the tee between the water dispense assembly and the dispense valve. Connect this end to the U.V. lamp assembly as shown.
5. Use 10" long tubing in kit with (2) tube supports and connect other side of U.V. lamp assembly to the tee that was just disconnected between the water dispense assembly and the dispense valve.

Lower Dispense Valve

1. Disconnect and cut the 21" long tubing coming out of the organic adsorption filter housing at the lower dispense valve end to 10" long connect to the U.V. lamp assembly (using tube support). See figure 2.
2. Connect 21" tubing from kit to U.V. lamp assembly and connect to lower dispense valve tee that you just disconnected (use tube support).
3. Connect the 21" long tubing coming out of the lower dispense valve elbow to the two-way divider assembly. (Use tube support) See figure 2.
4. Connect the check valve to the tubing coming out of the two-way divider assembly.
5. Connect 12" tubing coming out of the dump/dispense valve assembly to the two-way divider assembly. (Use tube support).
6. Remove the drain coupling from the 21" long tubing coming out of the dump/dispense valve assembly and run thru hole in the bottom of the cabinet at the far left end. Reconnect the drain coupling.

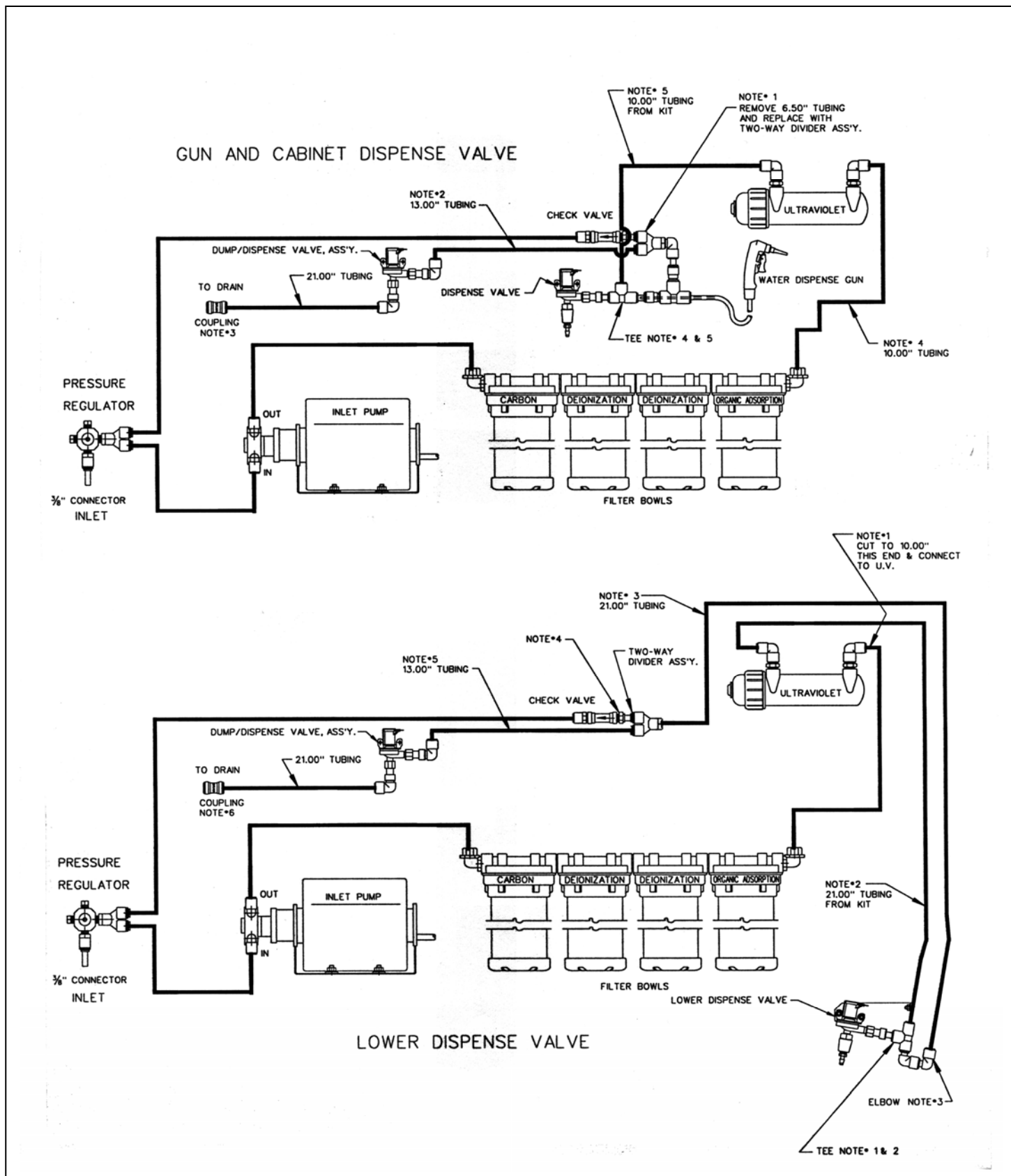


Figure 2

Warranty-

We are committed to providing our customers with quality equipment and service after the sale. Part of this objective involves keeping you informed of changes and new product additions.

Labconco Corporation warrants products of its manufacture for one year, from receipt of the equipment by the purchaser, against defects in materials and workmanship. This limited warranty covers parts and labor but not transportation and insurance charges. In the event of a warranty claim, contact the dealer who sold you the product. If the cause is determined to be a manufacturing fault, the dealer or Labconco Corporation will repair or replace all defective parts to restore the unit to operation. **Under no circumstances shall Labconco Corporation be liable for indirect, consequential or special damages of any kind.** This statement of warranty may be altered by specific published amendments. No individual has authorization to alter the provisions of this warranty policy or its amendments. Lamps and expendable items such as filters are not covered by this warranty. Damage due to corrosion or accidental breakage is also not covered.

WARNING: various federal, state or local regulations may govern the disposal and/or emission of substances used in connection with this equipment. All users of this equipment are urged to become familiar with any regulations that apply in the user's area concerning the dumping of waste materials in or upon water, land or air and to comply with such regulations.

Shipping Claims-

If a shipment is received in visibly damaged condition, be certain to make a notation on the delivering carrier's receipt and have his agent confirm the damage on your receipt. Otherwise, the damage claim may be refused.

If concealed damage or pilferage is discovered, notify the carrier immediately and retain the entire shipment intact for inspection. Interstate Commerce Commission rules require that the claim be filed with the carrier within 15 days after delivery.

NOTE: **Do not return goods.** Goods returned without prior authorization will not be accepted. Labconco Corporation and its dealers are not responsible for shipping damage. The recipient must file claims directly with the freight carrier. If authorization has been received to return this product, by accepting this approval, the user assumes all responsibility and liability for biological and chemical decontamination and cleansing. Labconco reserves the right to refuse delivery of any products that do not appear to have been properly cleaned and/or decontaminated prior to return.

Contacting Labconco-

If you have any questions that are not addressed in these instructions, or if you need technical assistance, please contact Labconco's Sales Information Department at either 1-(800) 821-5525, and Service Information at (800)-522-7658 or (816) 333-8811, between the hours of 7:00 a.m. and 6:00 p.m. Central Standard Time. Visit the Internet at <http://www.labconco.com> or e-mail: labconco@labconco.com.